



Before using this Grout Hog®,
study and understand entire
Owner's Manual.

Serial Number _____



GH75

Grout Hog®

Owner's Manual



Grout Hog®
EZG MANUFACTURING
1-800-417-9272

EZG Manufacturing
405 Watertown Road
Waterford, Ohio 45786
(740) 749-3512 or 1-800-417-9272
Fax (740) 962-2037 www.ezgmfg.com

TABLE OF CONTENTS

INTRODUCTION.....	3
ABOUT THIS MANUAL.....	3
GENERAL INFORMATION.....	3
SAFETY INFORMATION.....	3
SAFETY PRECAUTIONS.....	4-5
CALIFORNIA PROPOSITION 65 WARNING.....	6
SETUP INSTRUCTIONS.....	6
OPERATING INSTRUCTIONS.....	6-7
CLEANUP.....	7-8
OBTAINING SPARE PARTS.....	8
TROUBLE SHOOTING GUIDE.....	8
SERVICE RECORDS.....	9
WARNING LABELS AND LOCATIONS.....	10
ASSEMBLY DRAWING P.1.....	11
ASSEMBLY DRAWING P.2.....	12
PARTS LIST.....	13
SEAL KIT.....	14
NOTES.....	15
WARRANTY.....	16
WARRANTY REGISTRATION.....	17

INTRODUCTION

Congratulations on purchasing one of the finest pieces of masonry equipment on the market today! If this is your first EZG Manufacturing product, you will not be disappointed. If you have previously owned an EZG Manufacturing product you will find the same high quality and dependability that you have come to expect from EZG Manufacturing.

ABOUT THIS MANUAL

The purpose of this manual is to inform the owner/employer/and the operator, how to safely operate this piece of equipment, and make them aware of any hazards. It also contains important information regarding assembly, set up, operation, and maintenance. It is the Owner/Employers responsibility to make sure that anyone who operates this machine understands all safety warnings. If you do not understand any items in this manual, please contact the dealer where this product was purchased, or the manufacturer at the number listed throughout this manual. If you have any suggestions about how to make this manual easier to understand, contact the manufacturer. Keep this manual available for reference wherever this piece of equipment is being used and make it available to any operators.

GENERAL INFORMATION

Illustrations in this manual may show details or components that may not be the same as your machine. Continuing improvements to the design of this machine may have caused changes that are not included in this manual. The information in this document is subject to change without notice.

SAFETY INFORMATION

The following safety symbols and signal words will be used throughout this manual and on the product, for your safety and the safety of others, please become familiar with their meaning and heed their warnings.



This symbol, either used alone or with a signal word, is used to call your attention to instructions involving your safety and/or the safety of others. Failure to follow these instructions will likely result in personal injury or death.



DANGER

This signal word is used to identify a hazard which, if not avoided, will result in death or serious injury.



WARNING

This signal word is used to identify a hazard which, if not avoided, could result in death or serious injury.



CAUTION

This signal word is used to identify a hazard which, if not avoided, could result in minor or moderate injury.

NOTICE

This signal word is used to identify a hazard which, if not avoided, could result in property or equipment damage. It also may be used for special instructions related to performance, maintenance or general items.

SAFETY PRECAUTIONS



DANGER

Failure to obey the following safety instructions will result in DEATH or SERIOUS INJURY.

Stay clear of auger while machine is in operation. Keep all body parts, clothing, jewelry and solid objects away from all moving parts.

Never run Grout Hog® with end cap removed.



WARNING

Failure to obey the following safety instructions could result in DEATH or SERIOUS INJURY.

Read and understand entire manual before operating the Grout Hog®.

For your safety and the safety of others, replace any missing or damaged warning decals by contacting the manufacturer at 1-800-417-9272.

Make sure anyone operating the Grout Hog® is thoroughly familiar with its operation. Keep all unauthorized and untrained personnel, especially children away from Grout Hog®.

Never operate machine with guards or safety devices removed. Do not alter any safety guards.

Never perform any work on the Grout Hog® while it is running. Before working on or cleaning the Grout Hog®, shut off engine and disconnect hydraulic supply hoses.

Never operate the Grout Hog® under the influence of alcohol, drugs, or medications.

This Grout Hog® has been designed and built as a material delivery station, and should not be used for anything other than its intended purpose.

Consult forklift manufacturers specifications to insure load capacity is not exceeded.

Model	Empty Weight	Max Gross Weight
GH75	977 lbs. (443.16 kg)	3977 lbs. (1803.9 kg)

Do not exceed Maximum Gross Weight

Always use skid pins and lynch pins or safety chains whenever Grout Hog® is on lift forks.

Never stand under an elevated Grout Hog®.

Never attempt to ride the Grout Hog®.

SAFETY PRECAUTIONS



WARNINGS continued

When using the Grout Hog® on a forklift that has a multifunction joystick (one that requires the operator to hold button and move joystick to engage auxiliary hydraulics) be sure to plumb forward rotation of the auger on boom upside of control. This is to eliminate the chance of the boom dropping in the event the operator would release the button with the joystick still engaged.

The Grout Hog® is intended for use with a supervised hold to run control. If used outside of this scope call the EZG Manufacturing for optional grate to cover hopper.

Avoid breathing dust produced while using the Grout Hog®. Dust may contain crystalline silica and may cause serious health problems.

Do not operate near combustible materials.

Always know the location of nearest fire extinguishers, first aid kit, and emergency personnel phone numbers in case of emergency.



CAUTION

Failure to obey the following safety instructions could result in MINOR or MODERATE INJURY.

Inspect all hoses, fasteners, bolts and welds for nicks, cracks, cuts, damage, wear or looseness before each use. Repair as needed.

Always wear approved PPE, including glasses, hearing protection, hard hats, and ventilation masks when operating a Grout Hog®.

Do not use the Grout Hog® as a lifting device or with accessories or attachments not recommended by EZG Manufacturing, as damage to equipment or operator might result.

Avoid contact with hot hydraulic fluid.

Allow system to cool before performing any repairs or service.

NOTICE

Use only factory authorized parts.

Used lubricants such as engine and hydraulic oil, and hazardous waste must be taken to an authorized disposal or recycling center.

California - Proposition 65 Warning

Engine exhaust and some of its constituents, and some dust created by power sanding, sawing, grinding, drilling, and other construction activities contains chemicals known to the State of California to cause cancer, birth defects and other reproductive harm. Some examples of these chemicals are:

Lead from lead based paints - Crystalline silica from bricks -Cement and other masonry products -Arsenic and chromium from chemically treated lumber

Your risk from these exposures varies, depending on how often you do this type of work. To reduce your exposure to these chemicals: ALWAYS work in a well ventilated area, and work with approved safety equipment, such as dust masks that are specially designed to filter out microscopic particles.

SETUP INSTRUCTIONS

1. Bolt spring loaded tugpole to hopper.
2. Adapt auxiliary hydraulic quick couplings on forklift to the hydraulic quick couplings on Grout Hog® to make a match set. (The Grout Hog® requires 1350 PSI at 8 gallons per minute minimum and 3000 PSI at 18 gallons per minute maximum) 12 gallons per minute is best and should unload 3/4 yard of grout in less than 3 minutes.

OPERATING INSTRUCTIONS



Warning! This equipment is to be operated by trained and qualified personnel over the age of 18. Death or serious injury can result.

Before operating the Grout Hog® it should be properly set up on the jobsite. The Grout Hog® may be lifted by using a forklift. The GH75 weighs 977 lbs. (443.16 kg) empty and 3977 lbs. (1803.9 kg) full. Check forklift ratings before attempting to move the Grout Hog®.

1. Slide lift forks into lifting channels on Grout Hog®.
2. Insert skid pins into lift channels behind lift forks and secure with locking pins or use chain attachment.



Warning! Pins must be in place whenever Grout Hog® is on lift forks. Death or serious injury can result.

3. Attach Grout Hog's quick connect hydraulic hoses to forklift.
4. When using the Grout Hog® on a forklift that has a multifunction joystick (one that requires the operator to hold button and move joystick to engage auxiliary hydraulics) be sure to plumb forward rotation of the auger on boom upside of control. This is to eliminate the chance of the boom dropping in the event the operator would release the button with the joystick still engaged.

OPERATING INSTRUCTIONS continued

5. Set Grout Hog® securely on ground. Fill to desired capacity.



Warning! Check forklift or crane manufacturer's specifications to be sure forklift or crane is designed to handle weight of Grout Hog® and material in hopper. Death or serious injury can result.

6. Transport Grout Hog to desired location and raise above grouting level.

7. Hold discharge hose over area to be grouted.

8. Signal forklift operator to start forward rotation of Grout Hog® auger using hydraulic controls.

9. Discharge grout to desired areas until hopper is empty. (Repeat steps 5-9 as needed)

10. To regulate grout flow, squeeze discharge hose; to momentarily stop grout flow, crimp or fold hose.

11. To stop flow for extended period, signal forklift operator to reverse auger rotation momentarily until the valve closes on the discharge hose.

12. When Grout Hog® is not in use, store with ends of hydraulic hoses plugged into storage couplings on Grout Hog®. This will prevent pressure build up in hoses, usually occurring in hot sun.

CLEANUP



Caution! Before performing any described maintenance items, make sure engine is off and hydraulic supply hoses are disconnected. Death or serious injury can result.

1. Set Grout Hog® securely on ground. Turn off forklift and remove ignition key. Disconnect hydraulic supply hoses and remove skid pins or chains before backing away.

2. Remove end cap from auger tube.

3. Grasp auger handle firmly and pull auger straight out of tube.

4. Hose out and brush down hopper, then spray out and brush down auger until all excess grout is removed.

5. Flush discharge hose until clean.

6. Slide auger back in Grout Hog® so that it fits securely in place. Install the end cap back on tube.



Danger! Never run machine with end cap removed.. Death or serious injury will result.

7. Grease the fittings using EPI rated or equivalent grease. There are 4 grease fittings on the Grout Hog®, they are identified on the parts list by #62.

CLEANUP continued

Following each use, it is a good idea to apply a thin layer of lubricant to the inside of the hopper to make cleaning easier.

Notice! Do not use so much lubricant that it might stain block work at beginning of next use.

If equipped with crane bail, inspect crane bail, hopper, and base for cracked welds, loose bolts, and wear before each use. Repair or replace if needed.

OBTAINING SPARE PARTS

Spare parts for your Grout Hog® may be obtained by the following procedure:

1. Record the information from the serial number tag located on the frame.
2. Using the parts reference table in this manual, record the part number or component.
3. Contact your local Grout Hog® dealer or EZG Manufacturing at 1-800-417-9272 with the information recorded.

TROUBLE SHOOTING

Symptom	Potential Cause	Possible Solution
Auger will not turn	Hydraulic fluid restriction	Make sure quick connect couplings are match sets
	Hard concrete around auger	Clean auger
	Ice in hopper	Clean hopper
	Discharge hose plugged	Clean hose
Auger turns momentarily then stops	Hydraulic fluid restriction	Make sure quick connect couplings are match sets
Hopper unloading slowly	Hydraulic fluid restriction	Make sure quick connect couplings are match sets
	Inadequate fluid flow at port	Check fluid to ensure 8 GPM minimum (3/4 yard of grout in the hopper should unload in 2 to 3 minutes at 12 GPM)
	Discharge hose kinked	Lift hopper to higher elevation
	Discharge hose damaged	Replace discharge hose
	Auger turning in reverse	Move hydraulic control lever on forklift into forward
Auger worn	Replace auger	
Concrete leaking from back of machine	Continuous use without grease	Replace seal kit on back of hopper
Trouble getting quick connect couplers to couple together	Built up pressure on forklift hydraulics	Shutoff engine on forklift. Turn key to "On" position and move hydraulic control lever back and forth
	Built up pressure on hydraulic lines from heat	When not in use, lines must be coupled back on storage fittings of Grout Hog to avoid pressure build up
	Quick couplings are not a match set	Change quick couplings to matched set
	Built up pressure on hydraulic lines	Purchase & install connect under pressure couplings
Hopper is difficult to swivel by pulling on discharge hose	Lack of grease	Grease spindle
	Faulty support rollers	Replace support rollers

SERVICE RECORDS

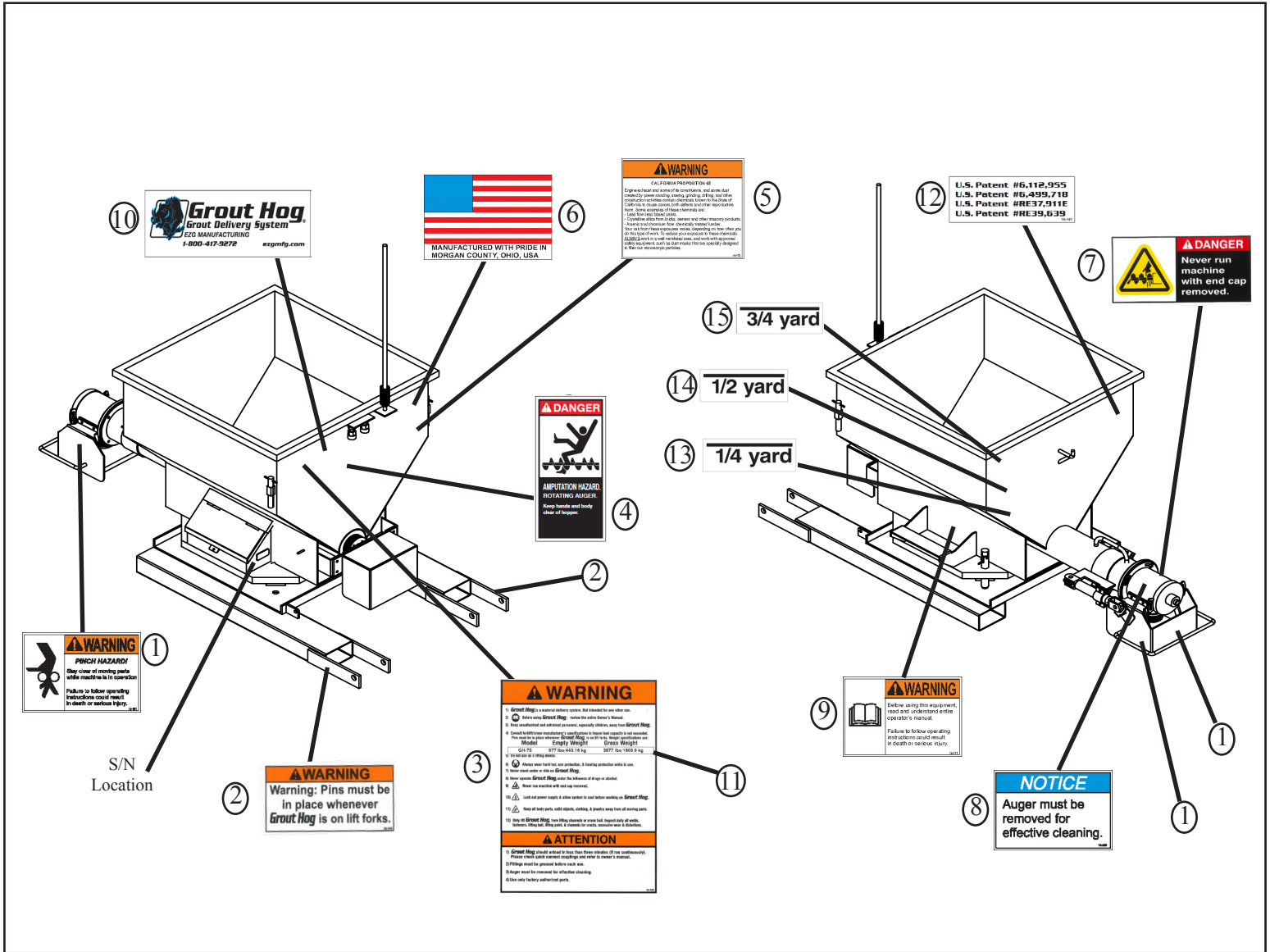
SERVICE PERFORMED

DATE

INITIALS

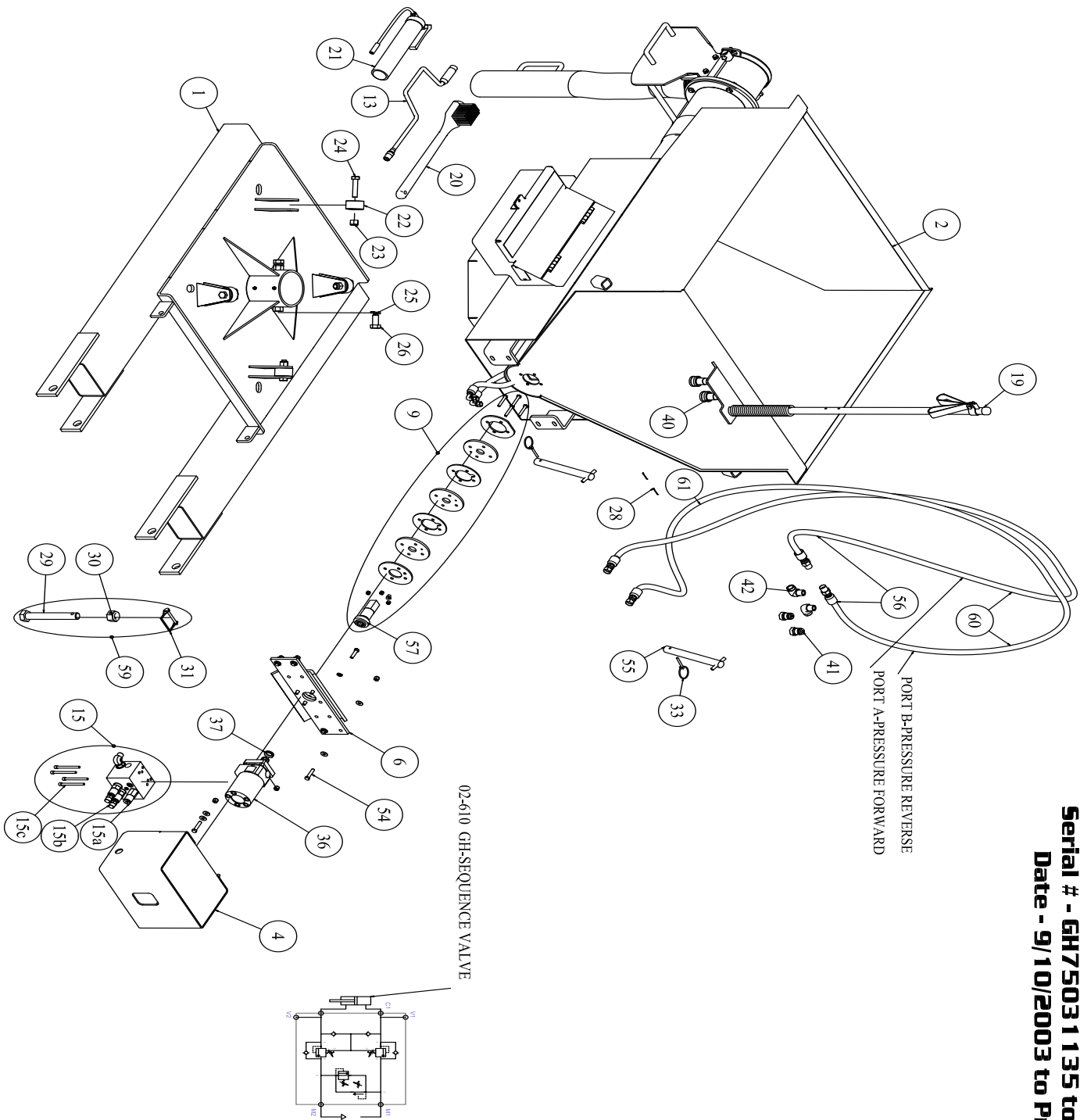
SERVICE PERFORMED	DATE	INITIALS

WARNING LABELS AND LOCATIONS



ITEM	PART NUMBER	DESCRIPTION	QTY
A	16-212	LABEL KIT	1
1		Small Pinch Point Decal	3
2		Pins Must be in Place Decal	2
3		Grout Hog Weight Decal	1
4		Danger - Amputation Decal	1
5		Proposition 65 Decal	1
6		U.S. Flag Decal	1
7		Danger - End Cap Decal	1
8		Remove Auger for Cleaning Decal	1
9		Read Owners Manual Decal	1
10		Grout Hog Decal	1
11		Weight Decal	1
12		U.S. Patents Decal	1
13		1/4 Yard Decal	1
14		1/2 Yard Decal	1
15		3/4 Yard Decal	1

Serial # - GH7503 1 135 to Present
Date - 9/10/2003 to Present



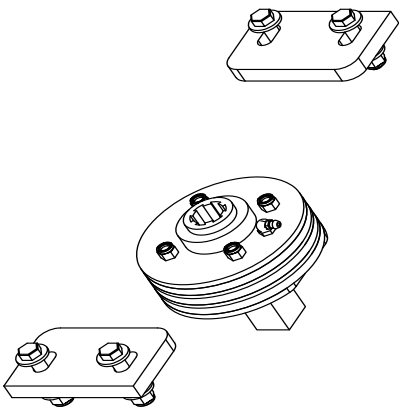
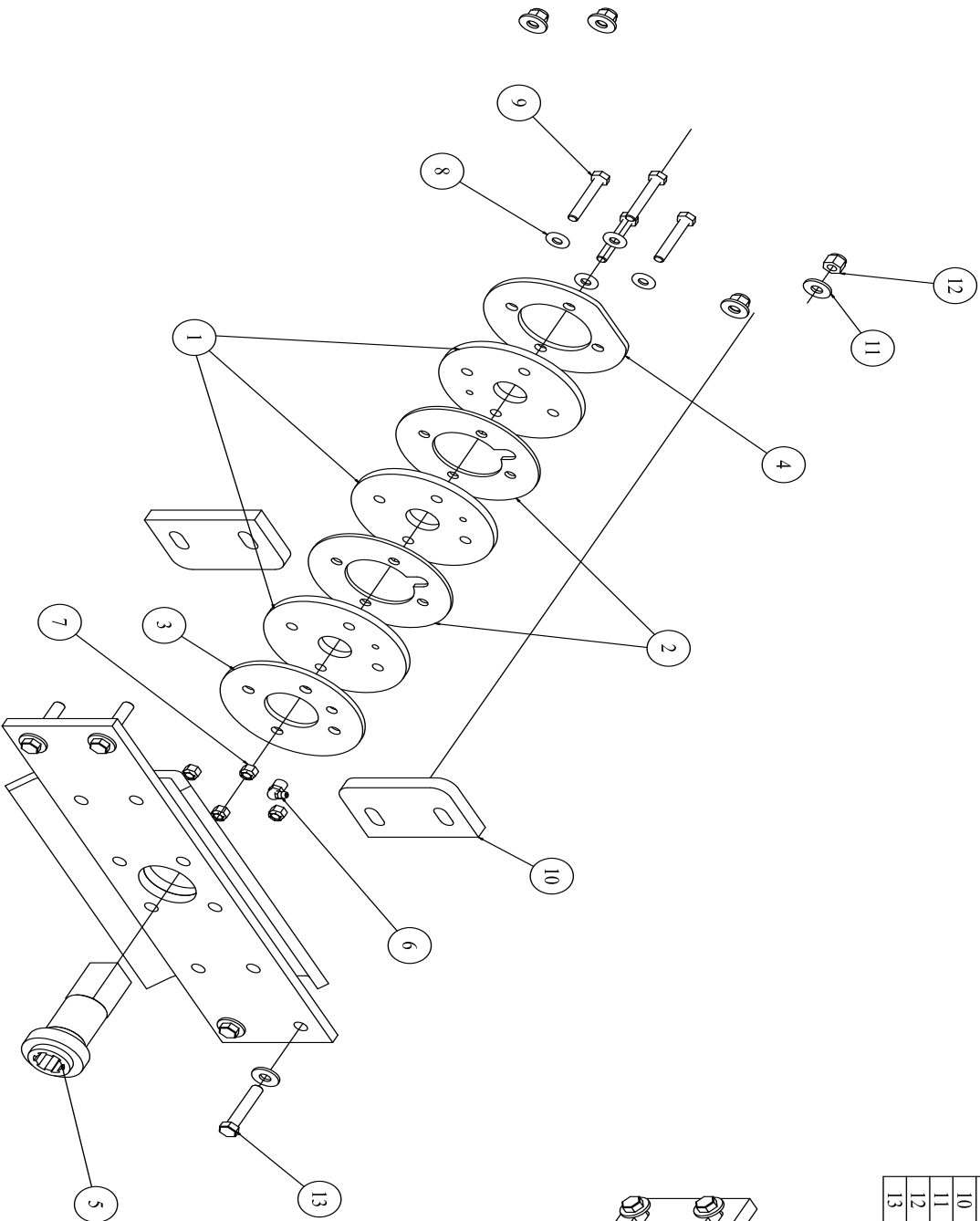
GH 75 GROUT HOG - Assembly p.1

PARTS LIST				PARTS LIST			
ITEM	QTY	PART NUMBER	DESCRIPTION	ITEM	QTY	PART NUMBER	DESCRIPTION
1	1	GH-A-2	GH-75 Base	31	1	09-407	5/16" Latch Pin
2	1	GH-A-7	GH-75 Hopper Assembly	32	2	09-206	3/8"-16 x 5/8" Square Nut
3	1	GH-A-10	GH-7" Tube-Snout Guard Assembly	33	4	09-400	1/4" Linch Pins
4	1	GH-A-11	GH-Hydraulic Motor Guard Assembly	34	6	09-214	3/8"-16 Flange Nut
5	1	GH-A-12	GH-7" Tube-Shutoff Cyl. Mount Assembly	35	2	09-339	3/8"-16 x 2" Full Thread Bolt
6	1	GH-A-13	GH-Hydr Motor Mount Plate Welded Assembly	36	1	02-415	Groint Hog Parker Hydraulic Motor
7	1	GH-A-17	GH-7" End Cap w/ Bushing (Spin-off)	37	1	02-426	Groint Hog Motor Seal Kit Parker TB Series
7a	1	15-100	Auger Shaft Bushing 2 1/2" OD x 1.36" ID	38	1	13-115	V-Ring Dust Seal for GH Hydraulic Motor
7b	1	13-109	Groint Hog End Cap O-Ring	39	2	02-703	Groint Hog Cylinder 1 1/2" Bore x 4" Stroke
8	1	GH-A-16	GH-Standard Auger 4 7/8" Diameter	40	4	02-218	Clevis Pin 3/4" x 2 1/2"
9	1	GH-A-26	GH-Rear Seal Kit	41	4	02-219	QAC88FP Parker Female Quick Connect
10	1	GH-A-27	GH-8" Discharge Hose w/handle (4" OD)	42	2	02-298	4NV-12-NPT-M Pioneer Male Quick Connect
11	1	GH-A-42	GH-7" Tube Front Snout Shutoff Arm	43	2	02-250	1/2" Pipe to 1/2" Pipe Street 90
12	1	GH-A-43	GH-7" Tube Rear Snout Shutoff Arm	44	1	09-349	1/2" JICM to 3/8" NPTM 90 DEG Adaptor
13	1	GH-A-6	GH-Speed Wrench Assembly	45	3	09-334	1/2" x 1" x 3/8" Thread-Shoulder Screw
14	1	GH-A-9	GH-7" Snout w/4" Dis. (Snout Only-Hydr)	46	5	09-119	1/2" x 1/2" x 3/8" Thread-Shoulder Screw
15	1	02-610	Groint Hog Sequence Valve Assembly	47	4	09-205	Shim .075" Thick x 1/2" ID x 7/8" OD
15a	1	02-634	Detroit Bi-Directional Relief	48	4	09-308	3/8"-16 Nut
15b	2	02-645	Hydratorfe Sequence Cartridge	49	14	09-308	3/8"-16 x 2" GR5 Bolt
15c	4	09-348	5/16"-18 x 3 1/2" Socket Head Cap Screw	50	26	09-105	5/16" Flat Washer
16	1	SS-15-P	Snout Shutoff Tube Strap 7" (Painted)	51	18	09-204	3/8"-16 Nylon Nut
17	1	SS-11-P	Snout Shutoff Cyl. Mount Strap (Painted)	52	4	09-355	3/8"-16 x 3/4" GR5 Bolt
18	1	13-101	GH-10" OD x 6 5/8" ID x 1/2" T Gasket	53	4	09-312	3/8"-16 x 2" GR5 Bolt
19	1	20-102	Groint Hog/Cement Hog Pogo Pole/Tug Pole	54	10	09-102	3/8" Lock Washer
20	1	11-108	Cleaning Brush	55	4	09-311	3/8"-16 x 1 3/4" GR5 Bolt
21	1	11-119	Pistol Grease Gun w/Whip Hose 18"	60	2	GH-521	GH/LGH Groint Hog-Fork Pin Assembly
22	4	15-139	RBC Y72L Bearing-Support Cann Roller	61	2	GH-A-22	GH-Hydraulic Supply Hose
23	4	09-210	5/8"-11 Nylon Nut	62	1	GH-A-25	GH-Power Shaft Connector
24	4	09-319	5/8"-11 x 2 3/4" GR5 Bolt	62	1	GH-A-23	GH-Cylinder Hose Assembly (V to C)
25	2	09-113	3/4" Lock Washer	59	1	GH-A-31	Groint Hog-Swivel Bolt Kit
26	2	09-329	3/4"-10 x 1 1/2" GR8 Bolt	60	1	GH-A-29	Groint Hog-Snout Cap Bolt Kit
27	2	12-100	Groint Hog 4" x 3/8" Hose Clamp	61	1	GH-A-40	Groint Hog Swivel Locking Pin Assembly
28	2	09-423	3/32" x 1" Cotter Pin	62	1	GH-534	GH-Swivel Latch Pin 7/8" CR 8" Long
29	1	09-327	1" x 8" GR8 Bolt	63	1	09-410	1/4" x 2" Roll Pin
30	1	09-213	1"-8 Nylon Nut				

GH 75 GROUT HOG - Parts List

GH-A-26

Serial #'s GH7502 1036 and GPH7502 153, GPHC7502 193
and below all require shims.



PARTS LIST

ITEM NUMBER	QTY	PART NUMBER	DESCRIPTION
1	3	13-116	Grout Hog Seal Intermediate Plate, Spacer
2	2	GH-17	GH-Rear Seal Outer Seal Plate
3	1	GH-18	GH-Rear Seal Inner Plate
4	1	GH-31	GH-Rear Seal Inner Plate
5	1	GH-A-25	GH-Power Shaft Connector
6	1	09-600	1/8" 90 Deg. Grease Fitting
7	4	09-202	5/16"-18 Nylon Nut
8	4	09-104	1/4" Flat Washer
9	4	09-305	5/16"-18 x 2" GR5 Bolt
10	2	GH-52	Grout Hog-Retrofit Rear Seal Spacer
11	8	09-105	5/16" Flat Washer
12	4	09-204	3/8"-16 Nylon Nut
13	4	09-312	3/8"-16 x 2" GR5 Bolt

GH 75 GROUT HOG - Seal Kit

WARRANTY

Limited Warranty

The manufacturer warrants that products manufactured shall be free from defects in material and workmanship that develop under normal use for a period of one year on all products from the date of shipment. The foregoing shall be the exclusive remedy of the buyer and the exclusive liability of the manufacturer. Our warranty excludes normal replaceable wear items, i.e. gaskets, wear parts, seals, O-rings, belts, drive chains, clutches, etc. Any equipment, part or product which is furnished by the manufacturer but manufactured by another, bears only the warranty given by such other manufacturer. (Manufacturer agrees to furnish free of charge a written description of problem or cause.) Warranty is voided by product abuse, alterations, use of equipment in applications for which it was not intended, use of non-manufacturer parts, or failure to follow documented service instructions. The foregoing warranty is exclusive of all other warranties whether written or oral, expressed or implied. No warranty of merchantability or fitness for a particular purpose shall apply. The agents, dealers, and employees of Manufacturer are not authorized to make modifications to this warranty, or additional warranties binding on the Manufacturer. Therefore, additional statements, whether oral or written, do not constitute warranty and should not be relied upon.

The Manufacturer's sole responsibility for any breach of the foregoing warranty provisions, with respect to any product or part not conforming to the Warranty or the description herein contained, is at its option (a) to repair, replace, or refund such product or parts upon the prepaid return thereof to location designated specifically by the Manufacturer. Product returns not shipped prepaid will be refused (b) as an alternative to the foregoing modes of settlement- the Manufacturer's dealer may repair defective units with reimbursement for expenses. A written description of problem or cause must accompany all warranty claims.

Except as set forth here in above and without limitation of the above, there are no warranties or other affirmation which extend beyond the description of the products on the fact here of, or as to operational efficiency, product reliability, or maintainability or compatibility with products furnished by others. In no event, whether as a result of breach of contract or warranty or alleged negligence, shall the Manufacturer, be liable for special or consequential damages including but not limited to: Loss of profits or revenue, loss of use of the product or any associated product, cost of capital, cost of substitute products, facilities or services or claims of customers. Manufacturer does not assume responsibility for any accident due to equipment modification.

No claim will be allowed for products lost or damaged in transit. Such claims should be filed with the carrier within fifteen days.

Effective July 20, 2005

EZG Manufacturing is the exclusive manufacturer of the patented Grout Hog® Grout Delivery System the Mud Hog® Hydraulic Mixing Station, the Hog Trough® mud pan, the Hog Cart™, the Hog Slopper™, the Booger Hog® Wall Scrubber, the Hog Leg® Wall Brace System, and the Hog Crusher™ Material Recycling System.

Fax Warranty Registration form to 740-962-2037
or submit online at www.ezgmfg.com by clicking on
“Products” then “Warranty Cards”.

WARRANTY REGISTRATION

CONTACT: _____

COMPANY: _____

ADDRESS: _____

CITY: _____ STATE: _____ ZIP: _____

TEL: (____) _____ - _____ FAX: (____) _____ - _____ CELL: (____) _____ - _____

EMAIL: _____

PURCHASED FROM: Direct Distributor: _____

PURCHASE DATE: _____ SERIAL NO. _____

**PLEASE COMPLETE THIS WARRANTY CARD, AND RETURN VIA MAIL, FAX, OR E-MAIL,
WITHIN 30 DAYS OF PURCHASE TO VALIDATE YOUR MANUFACTURER'S WARRANTY
FOR ALL EZG MANUFACTURING PRODUCTS.**

**WARRANTY PROVISIONS OF THIS MACHINE ARE HANDLED DIRECTLY THROUGH
THE MANUFACTURER.**

EZG MANUFACTURING * 1833 North Riverview Road, Malta, OH 43758 *

PHONE 1-800-417-9272 * Email: warranty@ezgmfg.com * FAX 740-962-2037

Please take a minute to fill out the survey below so that we can better serve our customers.

EZ Survey

1. WHERE DID YOU FIRST HEAR ABOUT EZG MANUFACTURING? (CHECK ONE)

Masonry Magazine Website Newsletter Referral Masonry Construction

Other: _____

2. WHAT INFLUENCED YOU TO BUY? QUALITY PRICE EASY TO USE OTHER

3. WHO IS YOUR SALES REPRESENTATIVE? _____

4. ARE YOU SATISFIED WITH THE CUSTOMER SERVICE YOU RECEIVED? YES NO

Explain: _____

5. WHAT OTHER EZG MANUFACTURING PRODUCTS DO YOU OWN?

6. WOULD YOU LIKE TO BE FEATURED IN OUR NEWSLETTER? YES NO

If yes, where can we reach you and what is the best time?

Comments: _____

