

**BUILT TO  
GO THE  
DISTANCE.**



**EZG<sup>®</sup>**  
**Manufacturing**



**FENCING EQUIPMENT**

# ABOUT US

## THE BEGINNING OF EZG

EZG Manufacturing started as EZ Grout and was born from the desire of one man to improve the quality of equipment used in masonry. In 1998, founder and CEO Damian Lang sought to help contractors increase efficiency and profitability with American made products built from hands-on experience. Masonry equipment available at the time lacked sturdiness and reliability, causing operators to experience systemic machine clogs and mechanical failures. Damian developed the first Grout Hog® after numerous prototypes. Over time, he perfected models by patenting new features specific only to the EZ Grout line, like clog-prevention mechanisms and an innovative delivery system.

## SUCCESSFUL EXPANSION

Once Damian's invention proved useful, he turned his creative focus to other areas of construction and masonry, eventually releasing the Mud Hog®, Uphill Grout Hog®, Hog Slopper®, Hog Leg®, Hog Trough® and Booger Hog®. In the early 2000's Damian introduced his Fence Hog® which now includes several models for the fencing industry. This automated fence installation equipment is well-known for saving construction crews hundreds of hours on large projects on virtually any terrain.

## EZG MANUFACTURING

EZG's reputation as an industry leader in masonry, fencing, and construction markets grew and soon its products were found on construction sites all over the globe. As Damian and his team learned more about the industry, they began to develop custom solutions for specific contracting problems. This led to the formation of EZG Manufacturing, which offers an extensive range of services including, laser cutting, machining, and powder coat painting.

## EZG TODAY

Damian continues to expand EZG's services and is quickly becoming a leading industry voice. As an author Damian also shares what he's learned after a lifetime of experience in his book R.A.C.E. - Rewarding and Challenging Employees: For Profits in Masonry. Damian's column, "[\*Contractor Tip of the Month\*](#)," can be found as a feature in multiple major industry magazines. He also regularly offers seminars and consultations for masonry and construction organizations all over the country.



**Damian Lang**  
CEO - EZG Manufacturing



# TABLE OF CONTENTS

## Stretchers & Dispensers ..... 4–10

- Fence Hog® .....5 [ [jump to](#) ]
- Barbwire Hog® .....8 [ [jump to](#) ]
- Stretch-N-Go Hog® ..... 10 [ [jump to](#) ]

## Mixers & Cement Dispensers ..... 11–16

- Mobile Mud Hog® ..... 12 [ [jump to](#) ]
- Fencer's Cement Hog® ..... 15 [ [jump to](#) ]

## Equipment Accessories ..... 17–19

## Beyond the Fence ..... 20-23

- Hogtrax® .....21 [ [jump to](#) ]
- EZG® Skid Steer Equipment Attachments ..... 22 [ [jump to](#) ]



**Stretch-N-Go...pg 10**

# *Stretchers & Dispensers*



# Fence Hog®

Developed with the assistance of Professional Fence Builders, the patented Fence Hog unit was designed to satisfy customer request for a machine that picks up and dispenses cumbersome rolls of chain link fence easily with no physical effort.

Powered by hydraulics of the skid-steer Loader, the uniquely designed cage mechanism opens and tilts to retrieve the roll of fence from the ground. For the Fence Contractor, this means no more unrolling fence by hand and using extra laborers to stand it up. With the standard features of the Fence Hog, this machine allows optimum efficiency for the fence contractor to install fence quickly, easily, and professionally using only two people.

## Universal Fence Hog Features:

- Attaches directly to skid steer loader with universal attachment plate
- Drive forward arm can be positioned on either side of unit to dispense material from right or left
- Choice of chain-link or woven wire stretcher bar included
- Optional 2 ft. (0.6 m) and 4 ft. (1.2 m) extension
- Optional tilt backing plate for uneven terrain
- Works with various fencing material such as chain-link, woven wire, vinyl coated fabric, snow fence, etc.

[ [+ view online](#) ]

## Model FH08-36:

*pictured at right with fencewinder (left) and woven wire stretcher bar (right)*

- Holds up to 36" (914 mm) diameter roll
- Standard cage height is 8 ft. (2.4 m)
- Capacity: 100 ft. (30 m) chain-link, 330 ft. (100 m) woven wire

## Model FH08-24:

*pictured at right with 6ft. chain-link and standard chain-link stretcher bar*

- Holds up to 24" (609 mm) diameter roll
- Standard cage height is 8 ft. (2.4 m)
- Capacity: 50 ft. (15 m) chain-link, 330 ft. (100 m) woven wire

## Model FHW:

*pictured at right loaded with 6ft. chain-link*

- Holds up to 24" (610 mm) diameter roll
- Standard cage height is 6 ft. (1.9M m)
- Capacity: 50 ft. (15 m) chain-link, 330 ft. (100 m) woven wire
- Attaches directly to mini skid steer loader or walk behind
- Rotating turntable to smoothly dispense fence
- **NEW**— now available with tilt plate option for easy lift and traversing uneven terrain



Model FH08-36



Model FH08-36



Model FH08-24

[ [+ view online](#) ]



Model FHW

[ [+ view online](#) ]

### Fence Hog® Specifications:

MODEL	FH08-36	FH08-24	FHW
Dimensions (LxWxH)	46" x 78" x 107" (1,168 x 1,981 x 2,718 mm)	33" x 74" x 107" (838 x 1,880 x 2,718 mm)	30" x 40" x 81" (762 x 1,016 x 2,057 mm)
Weight– empty	1,465 lbs. (665 kg)	1,195 lbs. (542 kg)	466 lbs. (211 kg)
Weight– w/ 2 ft. extension	1,660 lbs. (753 kg)	1,350 lbs. (612 kg)	N/A
Weight– w/4 ft. extension	1,840 lbs. (835 kg)	1,545 lbs. (701 kg)	N/A
Hydraulic Flow Rate	10 gal. @ 2,000 psi min. 35 gal. @ 3,500 psi max.	10 gal. @ 2,000 psi min. 35 gal. @ 3,500 psi max.	10 gal. @ 2,000 psi min. 35 gal. @ 3,500 psi max.
Roll Dimension– width	36" (914 mm)	24" (610 mm)	24" (610 mm)

#### Tilt Swivel Option

Fence Hog Tilt Adapter Plate permits swivel up to 30° in either direction to assist with installation on rocky or uneven terrain.



MODEL	Description
TILT	Tilt Adapter Plate
TA-A-18	Electric Control Harness w/ 14 pin connector
TA-A-20	Electric Control Harness w/ 7 pin connector
TA-A-21	Electric Control Harness w/ 8 pin connector

# CUSTOMER REVIEWS

**Fence Hog®** ★★★★★

## **Jason Riggins, R & S Fence**

“The Fence Hog saves us a lot of time and cuts down on manpower. Our projects used to take three men and now we only need two, or sometimes even one. The Fence Hog has definitely helped us become more competitive in the commercial market because jobs that used to take us three days now only take us one. Our jobs run a lot smoother and faster by using the Fence Hog.”

## **Travis Ray, Hornet Fence LLC.**

“We purchased the Fence Hog FH08-24 with the 4 ft. extension to stretch some 10ft., 12 ft., and 14ft. high chain-link for a detention center project. The time and money we saved in labor alone paid for the unit on the first job! The Fence Hog is a very well made piece of equipment that is efficient and easy to use. I highly recommend the Fence Hog to anyone in the fence construction industry!”

# Barbwire Hog®

## Model BWH

The Barbwire Hog effortlessly dispenses up to three rolls of barbwire simultaneously to save you time and money. Instead of worrying about the difficult labor required for a wire roll, workers simply need to operate the barbwire equipment and ensure the wire is secure after installation.

- Attaches with a universal attachment plate or fork pockets
- Compact for easy transport
- Designed to dispense three strands of barbwire
- Hydraulic arm adjustment
- Pivoting arm allows barbwire to be dispensed from both sides of the fence
- Utilize your entire roll of barbwire



[\[ + view online \]](#)

## Barbwire Hog Specifications:

MODEL	BWH
Dimensions (LxWxH)	83" x 47" x 84" (2,108 x 1,194 x 2,134 mm)
Weight- empty	1,200 lbs. (544 kg)
Capacity- rolls	Up to three 16" (406 mm)



### Optional Tensile Wire Attachments

Quickly and easily install top and bottom tensile wire with a few easy adjustments to your Barbwire Hog. (see pg. 19)





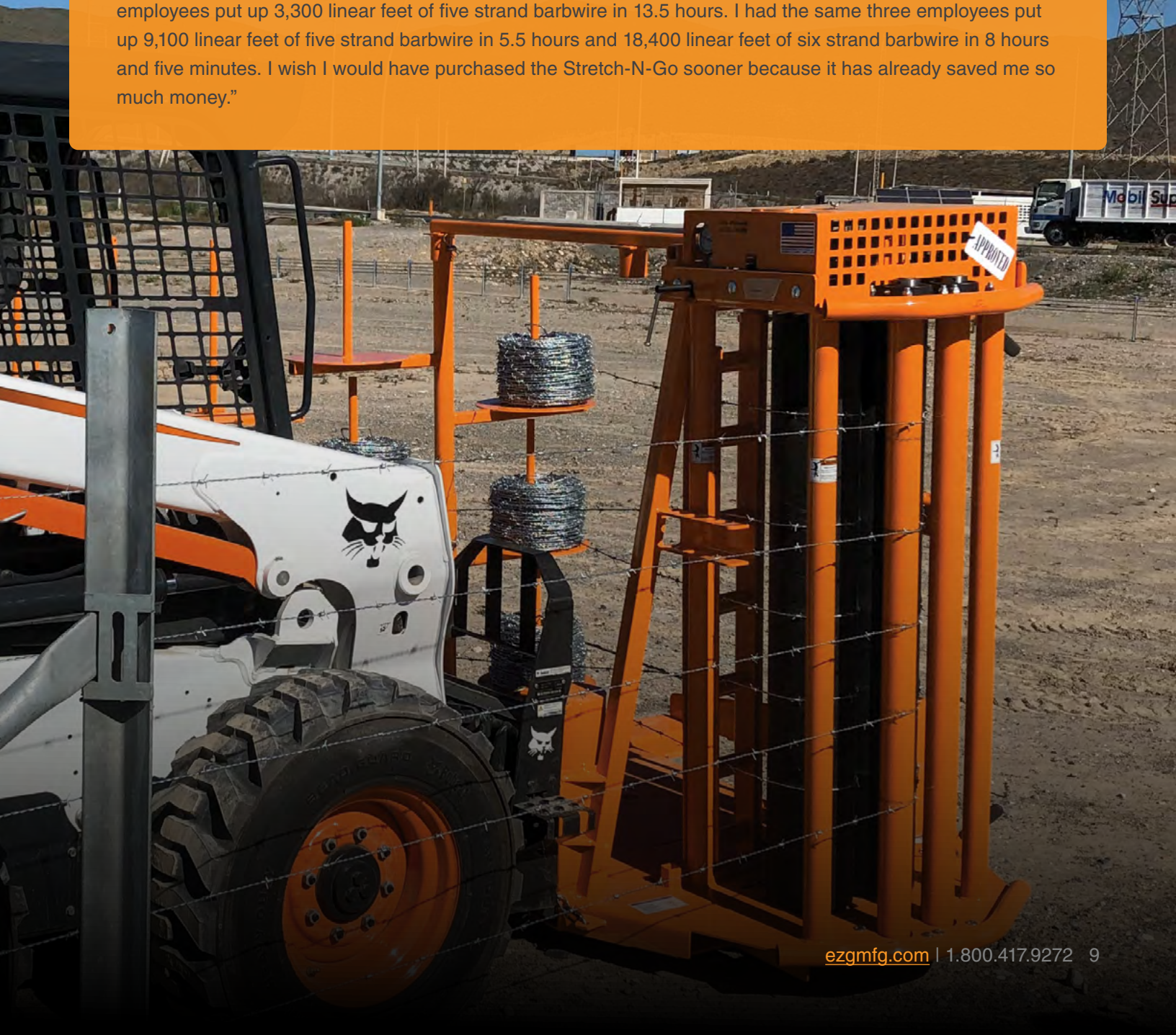
# CUSTOMER REVIEWS



## *Stretch-N-Go Hog*<sup>®</sup>

**Chad Meagher,  
Coast 2 Coast Fencing Inc.**

“I would not be able to do the square footage I do, in the time I do it, without the Stretch-N-Go. I had three employees put up 3,300 linear feet of five strand barbwire in 13.5 hours. I had the same three employees put up 9,100 linear feet of five strand barbwire in 5.5 hours and 18,400 linear feet of six strand barbwire in 8 hours and five minutes. I wish I would have purchased the Stretch-N-Go sooner because it has already saved me so much money.”



# Stretch-N-Go Hog®

## Model SNG4 & SNG6

The Stretch-N-Go Hog holds the fabric upright and guides the material along the fence line. Coated tension rolls protect wire during dispensing while adjustable brake system provides individual tension preferences. Fence can be nailed directly behind the skid steer, making for faster, more efficient work. The Stretch-N-Go Hog features pockets on both sides to allow the operator to easily switch from side to side.

- Tensions wire as it dispenses
- Load with skid-steer
- Adjustable braking system for desired tension
- Optional barbwire attachment (up to 6 rolls)



[\[ view online \]](#)

### Stretch-N-Go Hog Specifications:

MODEL	SNG4	SNG6
Dimensions (LxWxH)	87" x 47" x 67" (2,210 x 1,193 x 1,702 mm)	96" x 48" x 98" (2,483 x 1,219 x 2,489 mm)
Weight- empty	1,480 lbs. (671 kg)	1,785 lbs. (814 kg)
Max. Gross Weight	5,210 lbs. (2,363 kg)	5,550 lbs. (2,517 kg)
Capacity- rolls	330' (100 mm) x 4 660' (200 mm) x 2	330' (100 mm) x 4 660' (200 mm) x 2



### Optional Barbwire Attachment

The SNGBARB attachment mounts to the Stretch-N-Go Hog, allowing six rolls of barbwire to be dispensed and tensioned concurrently. (see pg. 19)

# *Mixers & Cement Dispensers*



# Mobile Mud Hog®

After several requests from fence contractors, EZG Manufacturing adds to its line of quality fence products with the Mobile Mud Hog to thoroughly and quickly mix materials and deliver those materials directly to the post-hole. The Mobile Mud Hog comes standard-equipped with our patented rubber blades that wipe the sides of the drum and continually roll the mix to the center of the drum to allow for the best mixing process.

With the Mobile Mud Hog, the contractor simply adds water and materials, starts the paddle rotation, and mixes. The skid steer operator simply drives along the fence line or pouring area while the material continues to mix as it is dispensed through the side discharge snout. The Mobile Mud Hog mixes and dispenses quickly. In fact, Matt Thompson of Fence Solutions, Lancaster, Ohio, stated, "We filled 80 post holes in 30 minutes!"

The hydraulic powered Mobile Mud Hog comes standard with forklift pockets on each unit and option to add skid steer plate attachment to allow even more versatility. Or, units can be built to the contractor's specifications. With load capacities of up to 3/4yards, the Mobile Mud Hog improves your job site efficiency.

## Model MMH20 & MMH 12

- 20 cu.ft. (0.57 m) & 12 cu.ft. (0.34 m<sup>3</sup>) Capacity
- Triple use: Concrete, Grout, and Mortar
- Will mix up to 3/4" (1.9 cm) aggregate
- Easy to load - Move the mixer to where the materials are
- Hydraulic dump gate
- Unload right where the material is needed—  
No unnecessary steps
- Unloads up to 1/2 cubic yard in 1 minute
- Universal skid steer plate
- Powered by auxiliary hydraulics on either  
a skid steer loader or forklift



## Model MMH4 & MMH9

- Triple use: Concrete, Grout, and Mortar
- Mixing paddles powered by hydraulics
- Manual slide gate for dispensing aggregate
- Will mix up to 3/4" (1.9 cm) aggregate
- MMH4 attaches directly to walk behind
- MMH9 attaches directly to mini or full size loader with additional attachment plates



# CUSTOMER REVIEWS

## *Mobile Mud Hog*® ★★★★★



### **John Roop, Capital Fence**

“We own two MMH’s and they are a huge time saver and safer for my employees to use. I will be planning to buy another one in the future.”

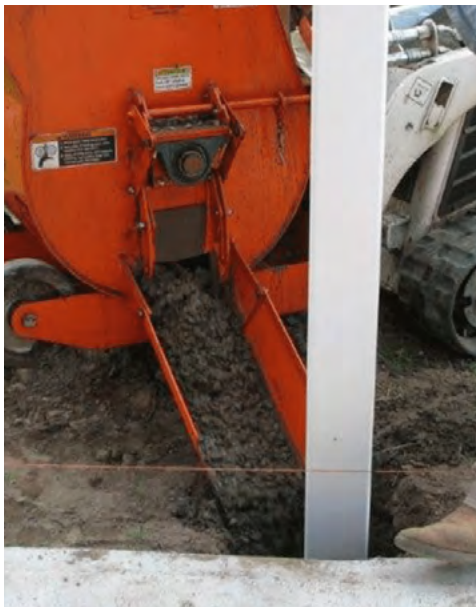
### **Scott Montague, Outlaw Fencing LLC.**

“I have had my MMH20 for seven years and I absolutely love it. I only need two workers to pour concrete when before I needed three or four. The manpower the MMH20 saves you is well worth the cost of having the MMH20 as part of your equipment line.”

### Mobile Mud Hog® Specifications:

MODEL	MMH4	MMH9	MMH12	MMH20
Dimensions L x W x H (mm)	29" x 44" x 29" (734 x 1,117 x 734 mm)	55" x 33" x 42" (1,397 x 838 x 1,067 mm)	72" x 40" x 52" (1,829 x 1,016 x 1,321 mm)	82" x 45" x 56" (2,083 x 1,143 x 1,422 mm)
Weight- empty	482 (219 kg)	750 (340 kg)	925 (419 kg)	1350 (612 kg)
Capacity	4 cu.ft. (0.12 m <sup>3</sup> )	9 cu.ft. (0.25 m <sup>3</sup> )	12 cu.ft. (0.34 m <sup>3</sup> )	20 cu.ft. (0.57 m <sup>3</sup> )
Capacity - Bags*	3 to 4	8 to 9	11 to 14	19 to 20
Power Source	Auxiliary Hydraulics	Auxiliary Hydraulics	Auxiliary Hydraulics	Auxiliary Hydraulics
Min. Hydraulic Flow	4 gpm @ 2,000 PSI	4 gpm @ 2,000 PSI	10 gpm @ 2,400 PSI	10 gpm @ 2,400 PSI
Max. Hydraulic Flow	16 gpm @ 3,000 PSI	26 gpm @ 3,000 PSI	40 gpm @ 3,000 PSI	40 gpm @ 3,000 PSI
Drum Thickness	3/16" (5 mm)	1/4" (6 mm)	1/4" (6 mm)	3/8" (9.5 mm) w/ 5/16" (8 mm) drum wrap
Forklift Pockets	Standard	Standard	Standard	Standard
Dump Action	Manual Gate	Manual Gate	Manual Gate	Manual Gate
Material Discharge	1/2 yd. <sup>3</sup> /min.	1/2 yd. <sup>3</sup> /min.	1/2 yd. <sup>3</sup> /min.	1/2 yd. <sup>3</sup> /min.
Drive System	Hydraulic	Hydraulic	Hydraulic	Hydraulic

\* Based on 80lb. pre-mix bags



# Fencer's Cement Hog®

## Model FCH50 & FCH100

The EZG Fencer's Cement Hog is compact, easy to operate and effectively delivers many different kinds of materials, not just cement, and can pour wet and dry materials, including sand. Available in two capacities, fence contractors can work smarter by driving their bottom line with this mobile delivery system.

- Use with a skid steer loader or small forklift
- 1/2 and 1 cubic yard capacities
- Hooks to auxiliary hydraulics on your loader or forklift; delivers up to 1" (25 mm) aggregate
- Unloads one-half cubic yard in 2 minutes
- Delivers wet or dry materials – even dry sand
- 10" (254 mm) tube with 7 1/2" (190 mm) variable pitch auger



## Fencer's Cement Hog® Specifications:

MODEL	FCH50	FCH100
Dimensions (LxWxH)	84" x 33" x 40" (2,134 x 838 x 1,016 mm)	78" x 39" x 48" (1,981 x 991 x 1,219 mm)
Weight– empty	790 lbs. (360 kg)	1050 lbs. (476 kg)
Gross Weight	2,790 lbs. (1268 kg)	5,050 lbs. (2295 kg)
Capacity	0.5 cu.yd. (0.38 m <sup>3</sup> )	1 cu.yd. (0.76 m <sup>3</sup> )
Auger Tube (tube dia. / auger dia.)	10" / 7.5" (254 / 191 mm)	10" / 7.5" (254 / 191 mm)
Hydraulic Flow Rate	8 gal. @ 2,000 psi min.	8 gal. @ 2,000 psi min.



# CUSTOMER REVIEWS

**Cement Hog®** ★★★★★



## **Nick Cacciola, Overland Contracting**

“We recently purchased two Cement Hogs to try out on a solar project in North Carolina where subsurface conditions made it necessary to embed the piers in concrete. The Cement Hogs made it possible to reach all areas of the site, most of which was inaccessible by concrete trucks, while significantly increasing our productivity and alleviating much of the risk associated with the site conditions. Versatility, ease of use, and low maintenance are all key features that have made the Cement Hog a positive addition to our equipment fleet.”



# *Equipment Accessories*



Fence Hog® Model Options and Add-Ons: [\[ view online \]](#)

ITEM	DESCRIPTION	FH08-36	FH08-24	FHW
FH36-4X	4 ft. (1.2 m) extension for installing fence 10-12' (3-3.6 m)	■	□	--
FH36-2X	2 ft. (1.2 m) extension for installing fence 10-12' (3-3.6 m)	■	□	--
FH24-4X	4 ft. (1.2 m) extension for installing fence 10-12' (3-3.6 m)	□	■	--
FH24-2X	2 ft. (1.2 m) extension for installing fence 10-12' (3-3.6 m)	□	■	--
FHW99-36	Woven wire stretcher arm to provide necessary tension for speedy installation of woven wire fencing; attaches easily with 2 pins.	■	□	--
FHW99-24	Woven wire stretcher arm to provide necessary tension for speedy installation of woven wire fencing; attaches easily with 2 pins.	□	■	--
TILT	Fence Hog tilt adapter plate; requires electric control harness (sold separately)	■	■	■
TA-A-18	Fence Hog tilt electric control harness w/14 pin connector	■	■	--
TA-A-20	Fence Hog tilt electric control harness w/7 pin connector	■	■	
TA-A-21	Fence Hog tilt electric control harness w/8 pin connector	■	■	--
FHWP	Fence Hog work platform; bolts easily to either side of Fence Hog; lets workers stand on stable surface while working in tandem with operator	■	■	--
HANGER	Hog Hanger holds fence in a temporary position from the top rail until the fence is stretched and secured to pole	■	■	■
FHW-A-9	Universal walk-behind skid-steer plate attachment for Mini Fence Hog	--	--	■
FHW-A-10	Bobcat MT-series walk-behind skid-steer plate attachment for Mini Fence Hog	--	--	■



- 1- 2 ft. (0.6 m) and 4 ft. (1.2 m) extensions available for models FH08-36 and FH08-24.
- 2- Hog Hangers slide easily on the top rail to temporarily hold the fence.

**Barbwire Hog® Model Options and Add-Ons:** [[view online](#)]

ITEM	DESCRIPTION	BWH
BWH-TTW	Barbwire Hog top tension wire; for quick and easy install of tension wire	<input checked="" type="checkbox"/>
BWH-BTW	Barbwire Hog bottom tension wire; for quick and easy install of tension wire	<input checked="" type="checkbox"/>
STRINGER	Fence Hog stringer for easy-dispense of bottom tension wire; serves as a useful guide for following post holes	<input checked="" type="checkbox"/>



**Stretch-N-Go Hog® Model Options and Add-Ons:** [[view online](#)]

ITEM	DESCRIPTION	SNG4	SNG6
SNGBARB	Stretch-N-Go Barbwire tree; holds and dispenses up to six rolls of barbwire at once; provides control of wire tension; mounts direct	<input checked="" type="checkbox"/>	<input type="checkbox"/>
SNGBARB-6	Stretch-N-Go Barbwire tree; holds and dispenses up to six rolls of barbwire at once; provides control of wire tension; mounts direct	<input type="checkbox"/>	<input checked="" type="checkbox"/>



**Work Smarter, Not Harder.**

*Our fence equipment accessories and attachments are designed to improve on the already impressive efficiencies of our fencing equipment. For a complete list of available options visit [ezgmfg.com](http://ezgmfg.com) or speak with your sales rep today.*

# *Beyond the Fence*



# EZG Hogtrax®

EZG ground protection mats specifically engineered for large equipment use on susceptible surfaces. EZG Hogtrax features a robust diamond cleat over honeycomb dual-surface tread design for aggressive grip, while preventing ruts, and establishing stable pathways.

## Features:

- Capable of supporting weights up to 120 tons\* per mat.
- Four hand holds per mat for easy manual mobilization and positioning.
- High-density polyethylene material ensures resistance to rot, splintering, warping and breakage.
- Effortless multi-mat connectivity for assembling temporary roads or functional platforms.



### GPM-SINGLE-CONNECTOR

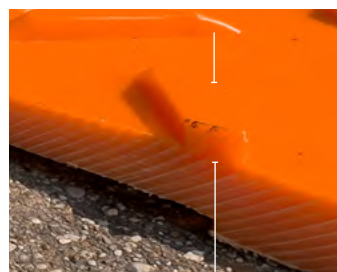
Optional stainless steel connection clamps; item sold separately.



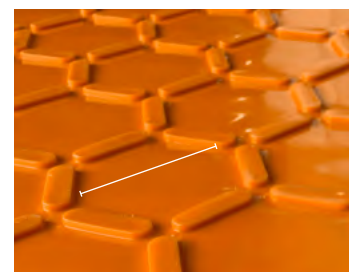
[\[ view online \]](#)

SPECIFICATIONS	GPM4x8
Dimensions: (L x W)	48" x 96" (1219 x 1438 mm)
Thickness	1/2 inch (13 mm)
Tread Depth	.273" (7 mm)- Diamond .149" (4 mm)- Honeycomb
Hand Holds	4 (centered on 4 sides)
Approx Area	32 sq.ft. (3 m <sup>2</sup> )
Compressive Strength (5% Strain)	2350 psi (16.2 MPa) @ 73.4°F (23°C)
Working Load*	120 tons (120,000 kg)
Weight	92 lbs. (42 kg)

\* Load limits are based on application.



Thickness: 0.5" (13 mm)  
Tread Depth: 0.273" (7 mm)



Honeycomb Tread Diameter: 4.25" (108 mm)

# Mobile Mud Hog® Trench Mixer

An efficient solution for precision pour applications. Whether for micro-trenching in tight spaces or utility work, this hydraulic-controlled mixer suits walk-behind and standard/full-sized skid steers.

Operational simplicity is key—add water and materials, start the paddle rotation, and drive the skid steer along the trench line. The gravity-fed system with a hydraulic release gate ensures controlled material flow to the 1 1/2" chute opening. The Mobile Mud Hog Trench Mixer, with hydraulic power, is a must-have for contractors prioritizing efficiency on-site.

**Features:**

- Sturdy integrated lifting pockets for transporting and skid steer attachment plate come standard.
- Mixing bin accommodates 9 cu.ft. or 1/3 yd. of material (8-9 80 lb. premix bags).
- Patented rubber blades facilitate optimal mixing.
- Hydraulic controlled release gate.
- Comes standard with choice of universal or walk-behind skid steer backing plate



[\[ view online \]](#)



SPECIFICATIONS	MMH9-MICRO-TRENCH
Dimensions L x W x H (mm)	61" x 33" x 42" (1,549 x 838 x 1,067 mm)
Trencher Plate L x W (mm)	12" x 6" (305 x 154 mm)
Trencher Opening L x W (mm)	8" x 1.5" (203 x 38 mm)
Weight— empty	700 (318 kg)
Capacity	9 cu.ft. (0.25 m <sup>3</sup> ) approx 8-9 bags*
Min. Hydraulic Flow	4 gpm @ 2,000 PSI
Max. Hydraulic Flow	26 gpm @ 3,000 PSI
Drum Thickness	1/4" (6 mm)
Forklift Pockets	Standard

\* Based on 80lb. pre-mix bags

# EZG Hog Pump®

Introducing the HP38-SS Skid Steer Mount Unit by EZG – A rugged and reliable multi-use delivery system designed specifically for grout, mortar, and concrete. Ideal for handling self-consolidating, 3/8" ready mix, lightweight concrete, masonry grout, shotcrete, and slurry. With progressive cavity pumping, variable speed hydraulics, and reversible functionality, this unit handles 3/8" pea gravel and delivers up to 10-12 cu.yd. per hour with a 2" line.

### 38SS Features:

- Handles self-consolidating, 3/8" ready mix and light-weight concrete as well as masonry grout, pour & form; shotcrete and slurry.
- Progressive cavity pumping with variable speed hydraulics and reversible functionality
- Handles 3/8" (10 mm) pea gravel
- Features an 8 cu.ft. (225 L) hopper
- Delivers up to 10-12 cu.yd. (7.6 - 9.2 m<sup>3</sup>) per hour with a 2" (50 mm) line
- Diesel and electric power supply options



[\[ view online \]](#)

MODEL	HP-38SS
Overall Dimensions: L x W x H in. (mm)	88" x 38" x 38" (2235 x 965 x 965)
Hopper Capacity cu.ft. (L)	8 cu.ft (225)
Aggregate Size in. (mm)	3/8" (10)
Power Source	Auxiliary Hydraulic Powered up to 42 GPM @ 2,600 psi.
Material Discharge/ (output line) in. (mm)	8-10 cu.yd. (6.1 - 7.6 m <sup>3</sup> ) / 2" (50)
Weight lbs. (kg)	925 lbs. (420)

# Warranty

EZG Manufacturing (“EZG”) warrants its products to be free of defects in material or workmanship that develop under normal use for two years.



Warranty period begins on the IN-SERVICE date (date of purchase by the end user of the product, date placed in service by a rental operator, or date of any utilization). All warranty is based on the following limited warranty terms and conditions, including the disclaimer of implied warranties and consequential damages. **Warranty registration is required to establish the in-service date and for the warranty to become effective.**

## **EZG Limited Warranty & Limitation of Liability Terms:**

1. EZG obligation and liability under this warranty is limited to repairing or replacing parts if, after EZG’s inspection, there is determined to be a defect in material or workmanship. EZG reserves the choice to repair or replace.
2. If EZG chooses to replace the part, it will be at no cost to the customer and will be made available to the EZG Distributor, Dealer, or Rental Center from whom the End User purchased the product.
3. Replacement or repair parts, installed in the product, are warranted only for the remainder of warranty period of the product as though they were the original parts.
4. EZG does not warranty engines. Engine warranty claims should be made directly to an authorized factory service center for the particular engine manufacturer.
5. EZG’s warranty does not cover the normal maintenance of products or its components (such as engine tune-ups and oil & filter changes). The warranty also excludes normal replaceable wear items, i.e. gaskets, wear parts, seals, O-rings, belts, drive chains, clutches, etc. unless such items are deemed to fail due to defective material or workmanship.
6. EZG’s warranty will be void if it is determined that the defect resulted from operator abuse, failure to perform normal maintenance on the product, use of non-manufacturer parts, or failure to follow documented service instructions, alterations or modifications made to the product without the written approval of EZG.
7. EZG will pay shop labor on warranty items at the EZG Shop Labor Rate in existence on the date of the warranty claim. EZG technician will determine the time allowed to complete a repair which will govern the shop labor hours to be allowed.
8. EZG will pay freight on warranty replacement parts at worldwide standard ground rates. No warranty replacement parts will be shipped air freight at the expense of EZG. EZG only pays outbound freight charges when sending warranty replacement parts to the customer via ground service. EZG does not pay any inbound freight. However, if EZG determines this to be a warranted item, EZG will then reimburse the customer for inbound freight at standard ground rates.
9. The EZG WARRANTY POLICY WILL NOT COVER THE FOLLOWING: TAXES; SHOP SUPPLIES; ENVIRONMENTAL SURCHARGES; AIR FREIGHT; TRAVEL TIME; LOSS OF TIME; INCONVENIENCE; LOSS OF RENTAL REVENUE; RENTAL COSTS OF EQUIPMENT USED TO REPLACE THE PRODUCT BEING REPAIRED; LOSS OF USE OF THE PRODUCT; COMMERCIAL LOSS; OR ANY OTHER CHARGES WHATSOEVER OR ANY LIABILITIES FOR DIRECT, INCIDENTAL, OR CONSEQUENTIAL DAMAGE OR DELAY.
10. EZG MANUFACTURING MAKES NO OTHER WARRANTY, EXPRESSED OR IMPLIED. THIS LIMITED WARRANTY IS IN LIEU OF THE WARRANTY OF MERCHANTABILITY AND FITNESS. THERE ARE NO OTHER WARRANTIES THAT EXTEND BEYOND THE DESCRIPTION ON THIS DOCUMENT.
11. No EZG Manufacturing employee or representative is authorized to change this warranty in any way or grant any other warranty unless such change is made in writing and signed by an officer of EZG Manufacturing.

**WARRANTY REGISTRATION IS REQUIRED TO ESTABLISH THE IN-SERVICE DATE AND FOR THE WARRANTY TO BE EFFECTIVE.**

*(some specialty equipment is exempted, or limitations may apply)*



1-800-417-9272 | [ezgmfg.com](http://ezgmfg.com) | [sales@ezgmfg.com](mailto:sales@ezgmfg.com)

1833 N. Riverview Rd., Malta, OH 43758

EZG Manufacturing is a division of EZ Grout Corporation. All EZG Manufacturing products are backed by our two-year warranty on parts unless otherwise stated and are now available for order. Information in this catalog is subject to change.