

Hog Leg®

Built for Strength, Designed for Safety – The Ultimate Masonry Bracing Solution

Hog Leg wall braces offer a safe, reliable solution for securing masonry projects, from standard walls to high and demanding structures. Designed to improve job site safety and productivity, Hog Legs are lightweight, adjustable, and compatible with all types of masonry blocks. With galvanized or powder-coated finishes and convenient lockable storage, they are engineered to handle the toughest construction challenges.

Universal Features:

- Engineered wall brace system for masonry projects
- Adjustable to fit any wall height
- Works with all types of masonry block
- Lightweight and easy to handle (heaviest piece: 38 lb.)
- Galvanized or powder-coated finish options
- Lockable storage container to prevent theft features fork pockets accessible on all four sides of the rack
- Elevates safety and productivity on the job

Hog Leg Features:

- Easy anchoring into footings; no block cutting or anchor bolts needed
- Includes a lockable storage rack that fits in an 8 ft. (2.438 m) truck bed
- Total system weight: 3,826 lb. (1,735 kg)
- Storage container dimensions: 89" x 43" x 26"



Installs easily through head joint.

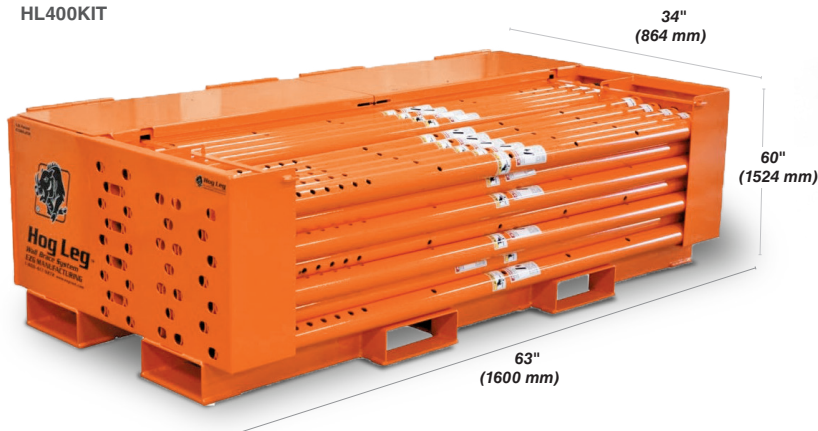


Optional kicker system can be employed for added stability.

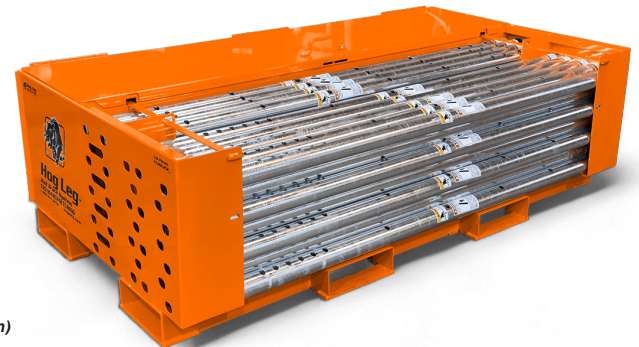


Easy one-man install; anchors to footings without cutting or bolts.

HL400KIT



GHL400KIT



Increase efficiency, profitability and safety on the job.



Hog Leg® Series Specifications

Due to the wide range of possible Hog Leg configurations and job site variables EZG recommends downloading the manual for the full engineering specifications and guidelines.

HL14EXTKIT



HL-A-5



Hog Leg Extension Kit:

- Extends reach to brace higher and farther with existing Hog Legs
- Galvanized or powder-coated pipe options
- Lockable storage container for secure transport
- Total weight: 2,399 lb. (1,088 kg)

Hog Leg Swivel/Screw Adjustment Assembly

- Optional swivel adjustment pipes for length adjustments in and out up to 4 inches.



Hog Leg extension kit used with kicker components for increased vertical support.



[LEARN
MORE]

f in @ Love it? We want to hear from you.

Snap a photo or capture a video of your team putting any of our Hog Legs to use and post it. Remember to tag us @EZG and use #leanmasonry, in your post.

... Thank you for your continued commitment to the EZG product line.



1-800-417-9272 / ezgmfg.com / sales@ezgmfg.com
1833 N. Riverview Road, Malta, Ohio 43758

EZG Manufacturing is a division of EZ Grout Corporation. All EZG Manufacturing products are backed by our **two-year warranty** on parts unless otherwise stated and are now available for order.

