



Hog Guard[®] Scaffold Guardrail System

INSTRUCTION MANUAL

HGS-A-1

HGS-A-2

HGS-A-3

Hog Guard® Scaffold Guardrail System INSTRUCTION MANUAL

These instructions apply to the following model(s):

HGS-A-1 • HGS-A-2 • HGS-A-3
Scaffold Guardrail System

Manual Revision:

04-15-2023

A copy of this manual must be available to users at all times. Visit EZGmfg.com for the latest user instruction manual based upon date of manufacture.



Visit EZGmfg.com for the latest user instruction manual based upon date of manufacture.

TABLE OF CONTENTS

Under Penalty of Law ----- 4

Purpose ----- 4

Instructions for Use ----- 5

Installation ----- 5

Limitations for Use ----- 6

Component Limitations ----- 6

Training ----- 7

Inspection ----- 7

Cleaning ----- 8

Frequency ----- 8

Product Labels ----- 9

Inspection Log ----- 10

Warranty ----- 11

UNDER PENALTY OF LAW

This manual must be read and understood in its entirety and used as part of your fall protection training program as required by OSHA and State and local regulatory agencies. This instruction manual is intended to meet industry standards set by OSHA and should be used as part of an Employee Fall Safety training program as required by OSHA. User must read and fully understand the limitations and proper use of the equipment, and be properly trained by employer prior to use per OSHA, and applicable local standards.

NOTE: This *User Instruction Manual* is not to be removed except by the user of this equipment. Current *User Instruction Manuals* must always be available to the user. Read and understand these instructions before using equipment. *Instructions can be downloaded from EZGmfg.com website.*



Misuse or failure to follow warnings, instructions and limitations on the use of this equipment may result in serious personal injury or death. For further instructions about proper use, contact EZG Manufacturing at 1-800-417-9272.

PURPOSE

EZG Manufacturing Hog Guard System (HGS-A-1 and HGS-A-2) has been designed to be used in Fall Prevention applications only. The Hog Guard System can be placed around the leading edges of fall hazards to prevent a worker from the possibility of going over an edge. Installation constraints for EZG Manufacturing Hog Guard System set forth in this manual must be adhered to. Work Positioning, Personal Fall Arrest, Climbing, Rescue, and any other systems must never be connected to Fall Prevention Systems. The Hog Guard System can be used in conjunction with scaffold applications to reduce the risk of fall hazards.

The Hog Guard Stocking Bracket (HGS-A-3) gives users a holding place for brick, block, and other materials, making these items easily accessible when needed.

Visit EZGmfg.com for the latest user instruction manual based upon date of manufacture.

INSTRUCTIONS FOR USE



WARNING

Do not alter or intentionally misuse this equipment. Never lean or climb on guardrail systems as it can result in serious injury.

- When any leading edges fall hazards are present, they must be blocked, or a supplemental Fall Protection system must be used in combination with an applicable Fall Prevention system.
- The work area must be free of all hazards, such as debris, rot, decay, cracking, and hazardous materials. NEVER install a guardrail system on top of gravel or other loose or slippery surfaces.
- The distance between each post is A MAXIMUM of 6' apart. Any Hog Guard systems must be installed a MINIMUM 10' from power lines and all other electrical hazards.
- All Hog Guard System Posts, fasteners, and all other equipment must be selected and deemed compatible by a Competent Person. All guardrails must be compatible 2" x 4" construction grade lumber and must overlap a minimum 12" on each end.
- Store this equipment in a cool, dry, and clean environment that is out of direct sunlight when not in use.

INSTALLATION

- It is the responsibility of the Competent Person to ensure that the material to which the Hog Guard System is installed and has the capacity to support the associated loads.
- Slide Hog Guard System over scaffold plank.
- Flip lock lever so both lock lever and leading edge of base are supported by scaffold plank.
- Engage safety latch to lock safety lever in place.
- The Hog Guard Stocking Bracket (HGS-A-3) is for use with two scaffold boards (cut to fit). The boards are then insert inside the Stocking Bracket.

LIMITATIONS FOR USE



WARNING

Use caution when employing this equipment around machines, electrical hazards, chemical hazards and sharp edges or abrasive surfaces, as contact may cause equipment failure, personal injury, or death.



WARNING

Altering or misuse of this product could lead to injury or death

- **Do not** expose this equipment to chemicals or harsh solutions that may have a harmful effect.
- User must not use or install equipment before receiving proper training from a Competent Person.
- **Do not** make repairs or alterations to the equipment.

COMPONENT LIMITATIONS

- **Do not** use if any part of the device appears to be damaged.
- **Do not** attempt to service the device or alter it in any way.
- A Competent Person must ensure compatibility of all connections and the system.
- **Do not** exceed the 700 lbs load bearing limitation per set of stocking bracket.

Visit EZGmfg.com for the latest user instruction manual based upon date of manufacture.

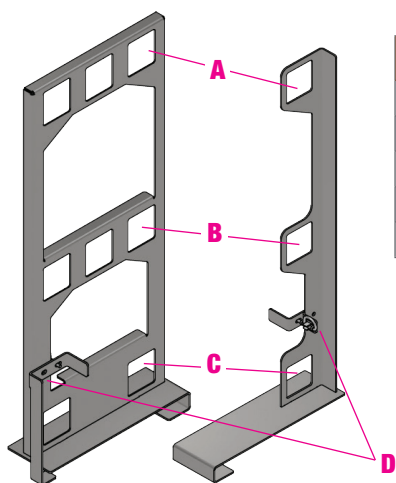
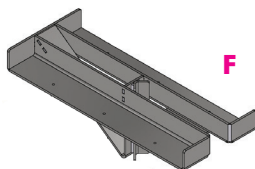


Figure 1: About Hog Guard System

A	Top Rail Installation Location
B	Midrail Installation Location
C	Toe board Installation Location
D	Safety Latch
F	Stocking Bracket Component



Before Each Use and Installation:

- Inspect the Hog Guard System according to the steps listed in this manual.
- When planning your system, consider all factors that will affect your safety during use of this equipment including, but not limited to:
 - Evaluation of the job site for possible hazards.
 - Ensuring the intended path of the user is unobstructed.

TRAINING

Employers must provide training to any employee who may be exposed to fall hazards in order to enable the employee to recognize and reduce fall hazards. Training must be conducted by a Competent or Qualified Person. Trainer and trainees must not be exposed to fall hazards during the training course. This equipment is intended to be used by persons trained in its correct application and use.

INSPECTION

Inspect this equipment and its components prior to each use. If inspection reveals any unsafe condition, remove the equipment from service immediately.

Any equipment that has been subjected to the forces of arresting a fall must be removed from service immediately.

Note: Equipment must not be altered in any way, including attempted repair. Only manufacturer, or entities authorized in writing by the manufacturer, may make repairs to this product.

- Equipment must be free of corrosion, chemical attack, alteration, excessive heating or extreme wear.
- All markings must be legible and attached to the equipment.
- Inspect guardrail surfaces for evidence of distortion, sharp edges, burrs, cracks, worn parts or corrosion.
- Inspect each system component and subsystem according to manufacturer's instructions.

If inspection reveals any defective condition, remove from service immediately.

CLEANING

- Clean the Hog Guard system with water and mild detergent.
- Wipe dry. Hang away from heat to dry.
- Excessive build-up of dirt, paint, etc., can prevent the Hog Guard system from working properly.
- **Do not** disassemble this equipment. Only EZG Manufacturing or entities authorized in writing by EZG Manufacturing may service this equipment.
- Store equipment in a cool, dry, clean environment, out of direct sunlight.
- **Do not** expose to chemical vapors. Avoid areas where chemical vapors are present. Thoroughly inspect this equipment after extended storage.

FREQUENCY

- All equipment must be visually inspected prior to each use according to the manufacturer's instructions included at time of shipment. Inspections must be performed by a Competent Person other than the user (as defined by OSHA) a minimum of once per year.

Visit EZGmfg.com for the latest user instruction manual based upon date of manufacture.

PRODUCT LABELS

The following labeling is affixed to product and must not be removed:

Write in
Date When
Manufactured

PART#: HGS-A-1



**Hog Guard
System**

**END GUARD
ASSEMBLY**

CAPACITY: 200 LBS.

MFG. DATE:

IMPORTANT: Only make compatible connections; refer to instructions for proper connection methods. Avoid contact with sharp or abrasive edges and surfaces. See instructions for restrictions on use with components, subsystems or systems with which this product is designed to be used. See instructions for inspection procedures. Guardrails rungs must face in toward work surface. Lumber used in guardrails must overlap a min of 12"

⚠️ WARNING:
Prior to use, fully read and understand manufacturer's instructions provided with this product at time of shipment. Failure to do so may result in serious injury or death.

USER MUST INSPECT EQUIPMENT PRIOR TO EACH USE. Component Person shall indicate "pass" or "fail" status on formal inspection of equipment; conducted at least every 12 months. **If equipment fails inspection, REMOVE FROM SERVICE IMMEDIATELY.**

Inspection Date	Initials	Inspection Date	Initials

DATE OF FIRST USE:

PART#: HGS-A-2



**Hog Guard
System**

**CENTER RAIL
ASSEMBLY**

CAPACITY: 200 LBS.

MFG. DATE:

IMPORTANT: Only make compatible connections; refer to instructions for proper connection methods. Avoid contact with sharp or abrasive edges and surfaces. See instructions for restrictions on use with components, subsystems or systems with which this product is designed to be used. See instructions for inspection procedures. Guardrails rungs must face in toward work surface. Lumber used in guardrails must overlap a min of 12"

⚠️ WARNING:
Prior to use, fully read and understand manufacturer's instructions provided with this product at time of shipment. Failure to do so may result in serious injury or death.

USER MUST INSPECT EQUIPMENT PRIOR TO EACH USE. Component Person shall indicate "pass" or "fail" status on formal inspection of equipment; conducted at least every 12 months. **If equipment fails inspection, REMOVE FROM SERVICE IMMEDIATELY.**

Inspection Date	Initials	Inspection Date	Initials

DATE OF FIRST USE:

PART#: HGS-A-3



**Hog Guard
System**

**STOCKING
BRACKET**

CAPACITY: 700 LBS. PER SET

MFG. DATE:

IMPORTANT: Only make compatible connections; refer to instructions for proper connection methods. Avoid contact with sharp or abrasive edges and surfaces. See instructions for restrictions on use with components, subsystems or systems with which this product is designed to be used. See instructions for inspection procedures. It is the responsibility of the end user to confirm the strength of scaffolding.

⚠️ WARNING:
Prior to use, fully read and understand manufacturer's instructions provided with this product at time of shipment. Failure to do so may result in serious injury or death.

USER MUST INSPECT EQUIPMENT PRIOR TO EACH USE. Component Person shall indicate "pass" or "fail" status on formal inspection of equipment; conducted at least every 12 months. **If equipment fails inspection, REMOVE FROM SERVICE IMMEDIATELY.**

Inspection Date	Initials	Inspection Date	Initials


DATE OF FIRST USE:




DO NOT REMOVE THIS LABEL
To access manual visit ezgmfg.com or scan this code:






1-800-417-9272
1833 N. Riverview Rd.
Malta, OH 43758
www.EZGmfg.com




DO NOT REMOVE THIS LABEL
To access manual visit ezgmfg.com or scan this code:





1-800-417-9272
1833 N. Riverview Rd.
Malta, OH 43758
www.EZGmfg.com



DO NOT REMOVE THIS LABEL
To access manual visit ezgmfg.com or scan this code:




1-800-417-9272
1833 N. Riverview Rd.
Malta, OH 43758
www.EZGmfg.com

INSPECTION LOG

Date of Manufacture: _____

Model Name/#: _____

Date of First Use: _____

[illegible]

Visit EZGmfg.com for the latest user instruction manual based upon date of manufacture.

WARRANTY

The manufacturer warrants that products manufactured shall be free from defects in material and workmanship that develop under normal use for a period of one year on all products from the date of shipment. The foregoing shall be the exclusive remedy of the buyer and the exclusive liability of the manufacturer. Our warranty excludes normal replaceable wear items, i.e. gaskets, wear parts, seals, O-rings, belts, drive chains, clutches, etc. Any equipment, part or product which is furnished by the manufacturer but manufactured by another, bears only the warranty given by such other manufacturer. (Manufacturer agrees to furnish free of charge a written description of problem or cause.) Warranty is voided by product abuse, alterations, use of equipment in applications for which it was not intended, use of non-manufacturer parts, or failure to follow documented service instructions. The foregoing warranty is exclusive of all other warranties whether written or oral, expressed or implied. No warranty of merchantability or fitness for a particular purpose shall apply. The agents, dealers, and employees of Manufacturer are not authorized to make modifications to this warranty, or additional warranties binding on the Manufacturer. Therefore, additional statements, whether oral or written, do not constitute warranty and should not be relied upon.

The Manufacturer's sole responsibility for any breach of the foregoing warranty provisions, with respect to any product or part not conforming to the Warranty or the description herein contained, is at its option (a) to repair, replace, or refund such product or parts upon the prepaid return thereof to location designated specifically by the Manufacturer. Product returns not shipped prepaid will be refused (b) as an alternative to the foregoing modes of settlement - the Manufacturer's dealer may repair defective units with reimbursement for expenses. A written description of problem or cause must accompany all warranty claims.

Except as set forth here in above and without limitation of the above, there are no warranties or other affirmation which extend beyond the description of the products on the fact here of, or as to operational efficiency, product reliability, or maintainability or compatibility with products furnished by others. In no event, whether as a result of breach of contract or warranty or alleged negligence, shall the Manufacturer, be liable for special or consequential damages including but not limited to: Loss of profits or revenue, loss of use of the product or any associated product, cost of capital, cost of substitute products, facilities or services or claims of customers. Manufacturer does not assume responsibility for any accident due to equipment modification. No claim will be allowed for products lost or damaged in transit. Such claims should be filed with the carrier within fifteen days.



1-800-417-9272 / ezgmfg.com / sales@ezgmfg.com

1833 N. Riverview Road, Malta, Ohio 43758

EZG Manufacturing is a division of EZ Grout Corporation. All EZG Manufacturing products are backed by our **two-year warranty** on parts unless otherwise stated and are available for order direct through our website.

©2023 EZG Manufacturing. 00452 03/2023