

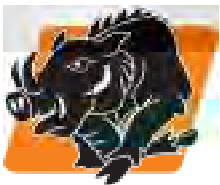


Before using this Grip-Hog-PPC, study and understand the entire Owner's Manual.



GRIP-HOG-PPC

Owner's Manual



GRIP-HOG-PPC
EZG MANUFACTURING
1-800-417-9272

EZG Manufacturing
405 Watertown Road
Waterford, Ohio 45786
(740) 749-3512 or 1-800-417-9272
Fax (740) 962-2037 www.ezgmfg.com

TABLE OF CONTENTS

INTRODUCTION.....	3
ABOUT THIS MANUAL.....	3
GENERAL INFORMATION.....	3
SAFETY INFORMATION.....	3
SAFETY PRECAUTIONS.....	4
OPERATING SAFETY.....	6
MACHINE DESCRIPTION.....	5
DAILY MAINTENANCE/INSPECTION.....	6
ASSEMBLY INSTRUCTIONS.....	6
OPERATING INSTRUCTION.....	6
TROUBLESHOOTING.....	6
PPC.....	7-10
NOTES / SERVICE RECORDS.....	11
WARRANTY.....	12
WARRANTY REGISTRATION.....	13

INTRODUCTION

Congratulations on purchasing one of the finest pieces of construction equipment on the market today! If this is your first EZG Manufacturing product, you will not be disappointed. If you have previously owned an EZG Manufacturing product, you will find the same high quality and dependability that you have come to expect from EZG Manufacturing.

ABOUT THIS MANUAL





The purpose of this manual is to inform the owner/employer/and the operator, how to safely operate this piece of equipment, and make them aware of any hazards. It also contains important information regarding assembly, set up, operation, and maintenance. It is the Owner/Employer's responsibility to make sure that anyone who operates this machine understands all safety warnings. If you do not understand any items in this manual, please contact the dealer where this product was purchased, or the manufacturer at the number listed throughout this manual. If you have any suggestions about how to make this manual easier to understand, contact the manufacturer. Keep this manual available for reference wherever this piece of equipment is being used and make it available to any operators.

GENERAL INFORMATION

Illustrations in this manual may show details or components that may not be the same as your machine. Continuing improvements to the design of this machine may have caused changes that are not included in this manual. The information in this document is subject to change without notice.

SAFETY INFORMATION

The following safety symbols and signal words will be used throughout this manual and on the product, for your safety and the safety of others, please become familiar with their meaning and heed their warnings.

	This symbol, either used alone or with a signal word, is used to call your attention to instructions involving your safety and/or the safety of others. Failure to follow these instructions will likely result in personal injury or death.
 DANGER	This signal word is used to identify a hazard which, if not avoided, will result in death or serious injury.
 WARNING	This signal word is used to identify a hazard which, if not avoided, could result in death or serious injury.
 CAUTION	This signal word is used to identify a hazard which, if not avoided, could result in minor or moderate injury.
NOTICE	This signal word is used to identify a hazard which, if not avoided, could result in property or equipment damage. It also may be used for special instructions related to performance, maintenance or general items.

SAFETY PRECAUTIONS



WARNING

Failure to obey the following safety instructions could result in DEATH or SERIOUS INJURY.

Read and understand entire manual before operating the Grip-Hog-PPC.

For your safety and the safety of others, replace any missing or damaged warning decals by contacting the manufacturer at 1-800-417-9272.

Make sure anyone operating the Grip-Hog-PPC is thoroughly familiar with its operation. Keep all unauthorized and untrained personnel, especially children, away from Grip-Hog-PPC.



Improper maintenance can be hazardous. Read and understand this section before you perform any maintenance, service or repairs.

OPERATING SAFETY

Always wear the proper PPE. Eye protection, hearing protection, and steel toed boots with metatarsal guards must be worn when using this device.

The Grip-Hog-PPC is capable of lifting 75 lbs using a 6" x 8" (152 x 203 mm) head attachment. Do not lift any materials heavier than the head attachment is rated for.

Compressed air is hazardous.

Only use compressed air for its intended purpose.



- Before using compressed air, inspect all equipment hoses and fittings for damage.
- Never exceed the recommended pressure.
- Never apply compressed air to the skin or clothing.
- Never direct compressed air at your own body or towards another person.

Do not over-tighten threaded connections. Over tightening can damage threads.

Do not place hands or any body part over the air exhaust. Ensure air exhaust is pointed in a safe direction prior to engaging control valve handle.

Only use the Grip-Hog-PPC for its intended purpose of handling material.

MACHINE DESCRIPTION

The Grip-Hog-PPC is the most versatile tool - a real back, knee and knuckle saver - when it comes to installing pavers and other supported materials. The vacuum pick-up venturi with a control valve installed on the T-handle allows operators to lift material up to 75 lbs. using the 6" x 8" head. A 100 PSI at 13 CFM compressor is suggested to operate.

A smaller compressor with minimum 6 CFM is required for the one man unit.

*** May not function normally on porous material**

Grip-Hog-PPC *(shown with 6" x 8" (152 x 203 mm) head attachment)*



DAILY MAINTENANCE / INSPECTION

- Perform a daily inspection prior to using this device.
- Inspect the unit for any loose fittings or damaged parts.
- Inspect threads for damage prior to assembly.
- Inspect the memory foam strip for tears or damage that would prevent a proper seal to material.
- If any defects are found, discontinue use of the device immediately.
- Only use the Grip-Hog-PPC for its intended purpose of handling material.
-

For replacement foam strips, contact EZG Parts Dept. at (800) 417-9272

OPERATING INSTRUCTIONS

The Grip-Hog-PPC works by applying air flow through a venturi valve. The airflow generates vacuum to the memory foam head. The Grip-hog-PPC weighs 16 lbs. Before operating the Grip-Hog-PPC, it should be assembled and properly set up.

To Operate the Grip-Hog-PPC:

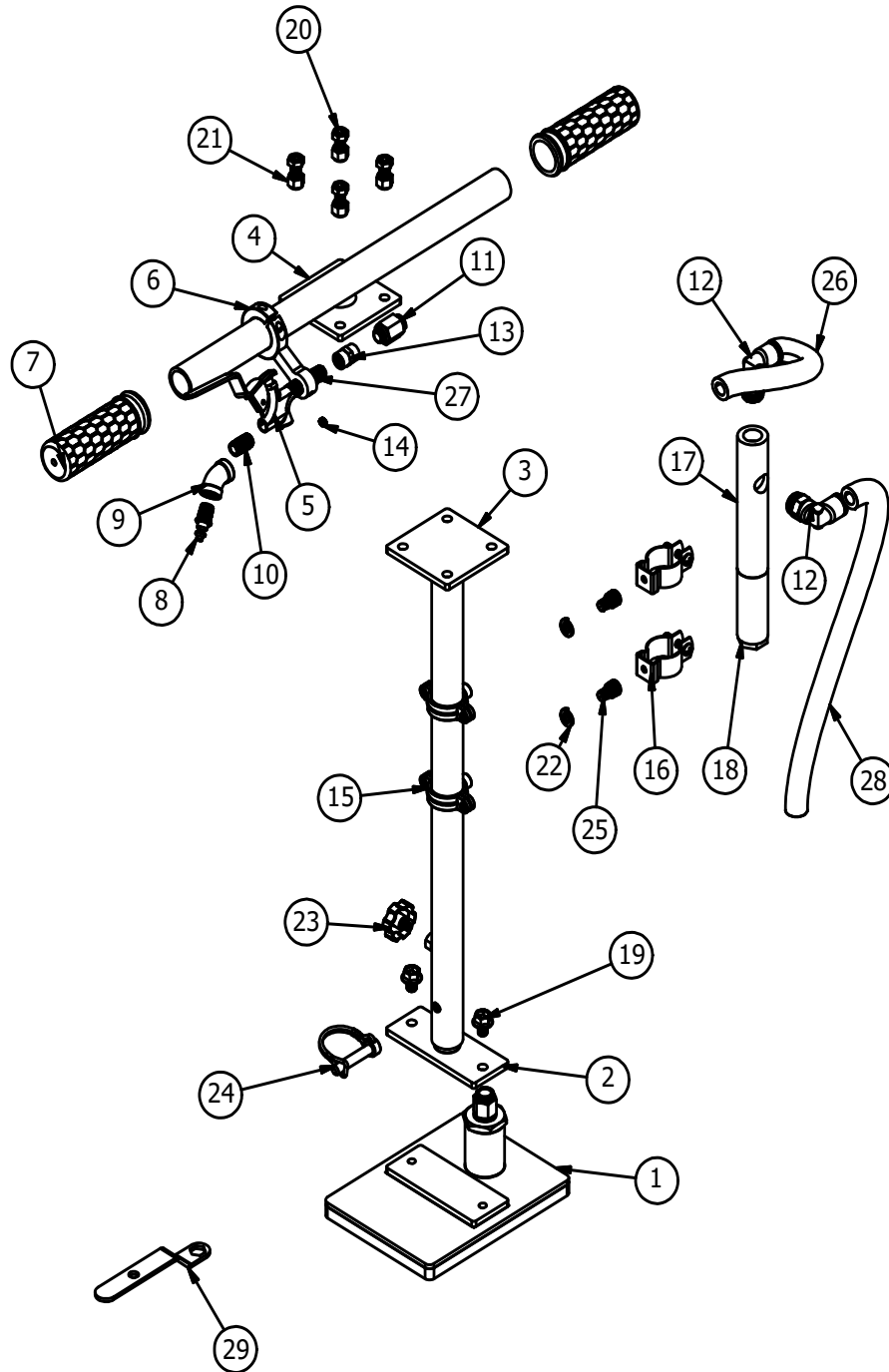
1. Verify that the material to be lifted does not exceed the weight limit of the head attachment being used.
2. Position the Grip-Hog-PPC on top of the material that will be lifted
3. Connect the Grip-Hog-PPC to a 100 psi, 13 CFM or higher air supply (NOTE: the "T" handle configuration only requires 6CFM from the compressor).
4. Position memory foam head on top of the material to be lifted.
5. Depress the control valve as vacuum is applied to material surface
6. Keep control valve depressed and use both hands to lift by the handles.
7. Lower the material in desired position and release the control valve (Note: Safe operating height should be no higher than 5" above working surface)
8. Repeat steps 2-8 as needed to complete moving of material

TROUBLESHOOTING

If the Grip-Hog-PPC will not lift material:

1. Ensure compressor has correct amount of CFM for load requirements.
2. Check foam head attachment for damage
3. Check air supply for damage or operating issue
4. Check material porosity (material may be too porous to lift)
5. Check material weight (material may be too heavy to lift)
6. Unit may need to be cleaned to remove debris from the micro screen in the venturi,
 - Connect to proper air supply
 - Remove hose from memory foam head.
 - Place hose into 5 gallon bucket of warm water
 - Depress control valve and suction water through the unit - water will be expelled through control valve end so point in a safe direction.
 - Continue depression of control valve until all water is suctioned through the unit
 - Repeat if necessary

GRIP-HOG-PPC



PPC Optional Head Attachments with Capacities		
PART NUMBER	DESCRIPTION	LIFT CAPACITY
600-A-21	12" x 24" (305 x 305 mm)	1613 lbs. (732 kg)
600-A-22	12" x 12" (305 x 305 mm)	771 lbs. (350 kg)
600-A-23	8" x 8" (203 x 203 mm)	272 lbs. (123 kg)
600-A-24	6" x 12" (152 x 305 mm)	245 lbs. (111 kg)
600-A-25	6" x 8" (152 x 203 mm)	365 lbs. (166 kg)
600-A-26	4.75" x 9.75" (121 x 248 mm)	227lbs. (103 kg)
600-A-27	4" x 6" (102 x 152 mm)	75 lbs. (34 kg)

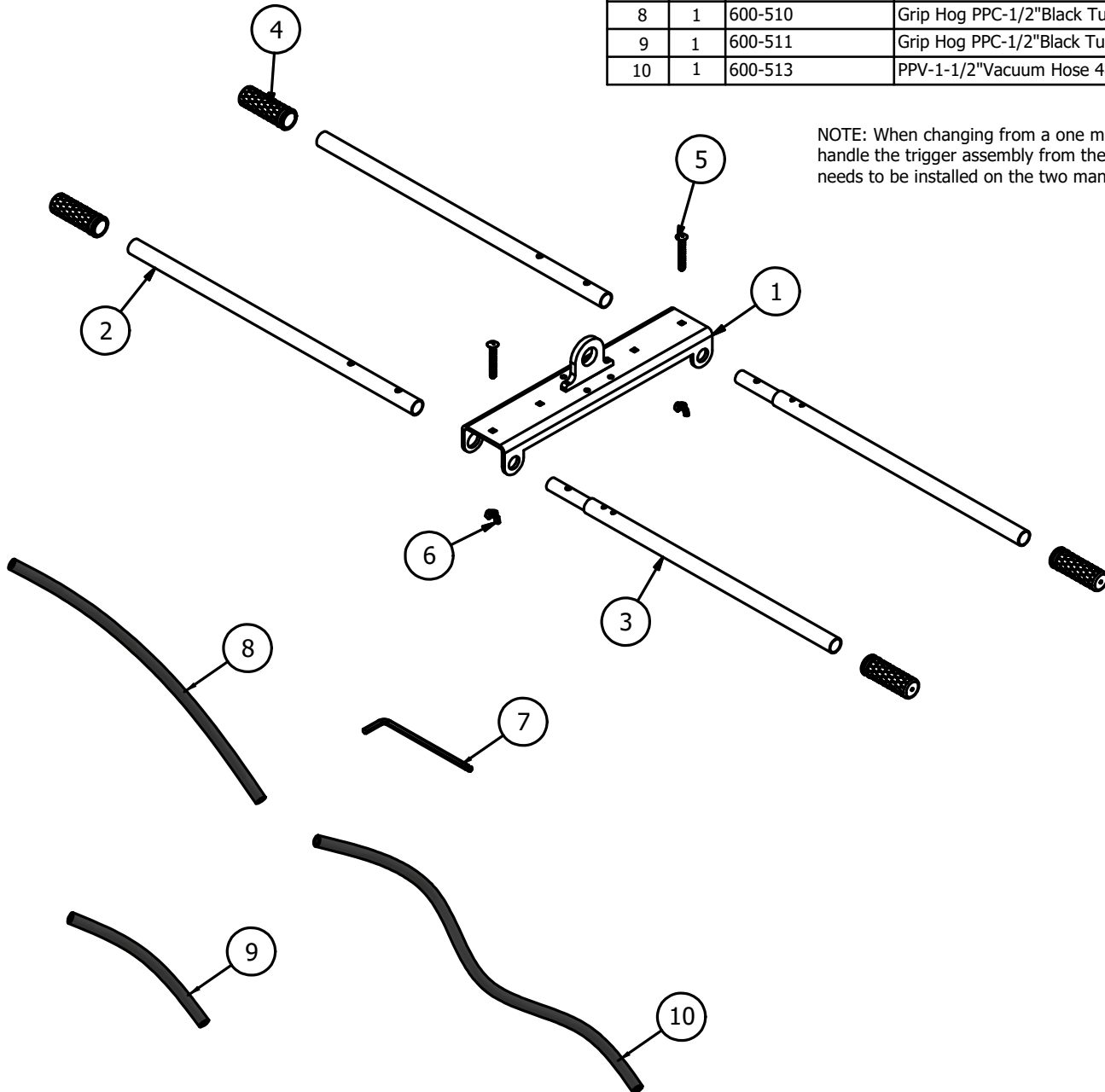
GRIP-HOG-PPC

PARTS LIST			
ITEM	QTY	PART NUMBER	DESCRIPTION
1	1	600-A-25	Grip Hog-6 x 8 Head w/ Gasket & Fittings
2	1	600-A-11	Inner Center Post Weld Assembly
3	1	600-A-12	Outer Center Post Weld Assembly
4	1	600-A-14	T-Handle Welded Assembly
5	1	600-A-28	Grip Hog PPC Air Valve w/SS Handle Assy
6	1	600-A-8	PPC-Air Valve Mount Welded Assy
7	2	17-100	Honeycomb Grip Handle
8	1	17-102	1/4" Male Plug M Style
9	1	17-112	1/4" 45 Degree Elbow Galvanized
10	1	17-117	1/4 x Close Nipple SS
11	1	17-126	1/2 Tube to 1/4 Thread Push-In Fitting
12	2	17-129	1/2 Tube 90 to 1/2 Thd Push-in Fitting
13	1	17-142	1/4 x 1/4 Female Brass Coupler
14	1	17-172	1/4-20 x 1/4 Set Screw Knurl-Grip
15	2	17-181	1 5/16 Snug Hold Threaded Rod Clamp
16	2	17-180	1 5/16 Threaded Rod Mount Clamp Hanger
17	1	IVI-MU-FF-8G-ALU-VR-SPL	Venturi (New Design)
18	1	IVI-MU-MF-8G-12G-ALU-VR-SPL	Muffler
19	2	09-3242	3/8-16 x 3/4 Flange Hex Head Screw
20	4	09-307	3/8-16 x 1" GR5 Bolt
21	4	09-204	3/8"-16 Nylon Nut
22	2	09-102	3/8" Lock Washer
23	1	09-3241	3/8-16 x 3/4 Plastic Head Thumb Screw
24	1	09-436	3/8 x 2 3/8 Clevis Pin
25	2	09-3251	3/8-16 x 1/2 Socket Head Screw
26	1	600-510	Grip Hog PPC-1/2"Black Tube 28"(V-Head)
27	1	17-107	1/4 x 2 Nipple Galvanized
28	1	600-511	Grip Hog PPC-1/2"Black Tube18"(H-Handle)
29	1	600-026	Grip Hog - 9/16" Wrench

GRIP-HOG-PP2H HANDLE KIT

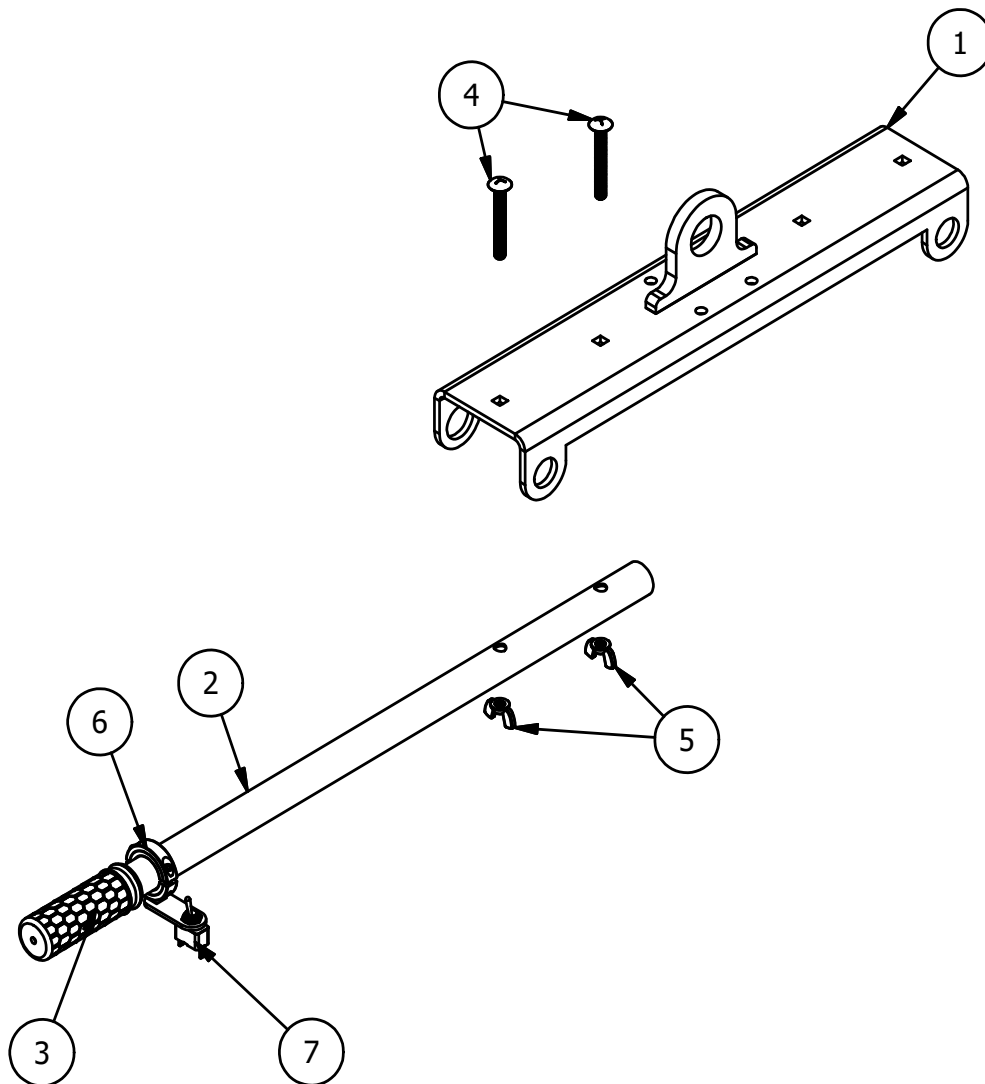
GRIP HOG PP2H PARTS LIST			
ITEM	QTY	PART NUMBER	DESCRIPTION
1	1	600-A-30	2-Man Handle Mount w/ Lifting Lug
2	2	600-507	2 Man Handle A / Exc.Guide Handle 30"L
3	2	600-A-16	2 Man Handle B Welded Assembly
4	4	17-100	Honeycomb Grip Handle
5	2	09-3244	3/8-16 x 3 Carriage Bolt
6	2	09-294	3/8-16 Wing Nut
7	1	11-169	3/16 Hex Key Wrench
8	1	600-510	Grip Hog PPC-1/2"Black Tube 28"(V-Head)
9	1	600-511	Grip Hog PPC-1/2"Black Tube18"(H-Handle)
10	1	600-513	PPV-1-1/2"Vacuum Hose 48"L(H-Handle)

NOTE: When changing from a one man to a two man handle the trigger assembly from the one man handle needs to be installed on the two man handle.



GRIP-HOG-PP2H (Shown as Excavator Attachment)

GRIP-HOG-PP2H EXCAVATOR PARTS LIST			
ITEM	QTY	PART NUMBER	DESCRIPTION
1	1	600-A-30	2-Man Handle Mount w/ Lifting Lug
2	1	600-507	2 Man Handle A / Exc.Guide Handle 30"L
3	1	17-100	Honeycomb Grip Handle
4	2	09-3244	3/8-16 x 3 Carriage Bolt
5	2	09-294	3/8-16 Wing Nut
6	1	600-A-15	PPB-Toggle Switch Mount Weld Assembly
7	1	17-152	Toggle Switch



NOTES

This image shows a blank sheet of white paper with horizontal ruling lines. The lines are evenly spaced and extend across the width of the page. There are no margins, text, or other markings on the paper.

SERVICE RECORDS

[illegible]

Manufacturer's Warranty

EZG Manufacturing ("EZG") warrants its manufactured products to be free of defects in material or workmanship that develop under normal use for two years.



Warranty period begins on the IN-SERVICE date (date of purchase by the end user of the product, date placed in service by a rental operator, or date of any utilization). All warranty is based on the following limited warranty terms and conditions, including the disclaimer of implied warranties and consequential damages. **Warranty registration is required to establish the in-service date and for the warranty to become effective.**

EZG Limited Warranty & Limitation of Liability Terms:

1. EZG obligation and liability under this warranty is limited to repairing or replacing parts if, after EZG's inspection, there is determined to be a defect in material or workmanship. EZG reserves the choice to repair or replace.
2. If EZG chooses to replace the part, it will be at no cost to the customer and will be made available to the EZG Distributor, Dealer, or Rental Center from whom the End User purchased the product.
3. Replacement or repair parts, installed in the product, are warranted only for the remainder of warranty period of the product as though they were the original parts.
4. EZG does not warranty engines. Engine warranty claims should be made directly to an authorized factory service center for the particular engine manufacturer.
5. EZG's warranty does not cover the normal maintenance of products or its components (such as engine tune-ups and oil & filter changes). The warranty also excludes normal replaceable wear items, i.e. gaskets, wear parts, seals, O-rings, belts, drive chains, clutches, etc. unless such items are deemed to fail due to defective material or workmanship.
6. EZG's warranty will be void if it is determined that the defect resulted from operator abuse, failure to perform normal maintenance on the product, use of non-manufacturer parts, or failure to follow documented service instructions, alterations or modifications made to the product without the written approval of EZG.
7. EZG will pay shop labor on warranty items at the EZG Shop Labor Rate in existence on the date of the warranty claim. EZG technician will determine the time allowed to complete a repair which will govern the shop labor hours to be allowed.
8. EZG will pay freight on warranty replacement parts at worldwide standard ground rates. No warranty replacement parts will be shipped air freight at the expense of EZG. EZG only pays outbound freight charges when sending warranty replacement parts to the customer via ground service. EZG does not pay any inbound freight. However, if EZG determines this to be a warranted item, EZG will then reimburse the customer for inbound freight at standard ground rates.
9. The EZG WARRANTY POLICY WILL NOT COVER THE FOLLOWING: TAXES; SHOP SUPPLIES; ENVIRONMENTAL SURCHARGES; AIR FREIGHT; TRAVEL TIME; LOSS OF TIME; INCONVENIENCE; LOSS OF RENTAL REVENUE; RENTAL COSTS OF EQUIPMENT USED TO REPLACE THE PRODUCT BEING REPAIRED; LOSS OF USE OF THE PRODUCT; COMMERCIAL LOSS; OR ANY OTHER CHARGES WHATSOEVER OR ANY LIABILITIES FOR DIRECT, INCIDENTAL, OR CONSEQUENTIAL DAMAGE OR DELAY.
10. EZG MANUFACTURING MAKES NO OTHER WARRANTY, EXPRESSED OR IMPLIED. THIS LIMITED WARRANTY IS IN LIEU OF THE WARRANTY OF MERCHANTABILITY AND FITNESS. THERE ARE NO OTHER WARRANTIES THAT EXTEND BEYOND THE DESCRIPTION ON THIS DOCUMENT.
11. No EZG Manufacturing employee or representative is authorized to change this warranty in any way or grant any other warranty unless such change is made in writing and signed by an officer of EZG Manufacturing.

**WARRANTY REGISTRATION IS REQUIRED
TO ESTABLISH THE IN-SERVICE DATE AND
FOR THE WARRANTY TO BE EFFECTIVE.**



WARRANTY EXCLUSIONS:

EZG 2-year manufacturing warranty excludes sourced products tools and consumables such as but not limited to marking paint, gloves, snips, tape measures, chisels, hammers, caulk guns, straps, brooms, sprayers, squares, levels, tripods, masks, blades, and wheels unless otherwise noted. Other exclusions may apply.



1-800-417-9272 | ezgmfg.com | sales@ezgmfg.com
1833 N. Riverview Rd., Malta, OH 43758

EZG Manufacturing is a division of EZ Grout Corporation. All EZG Manufacturing products are backed by our two-year warranty on parts unless otherwise stated and are now available for order. Information in this catalog is subject to change.

Fax Warranty Registration form to 740-962-2037 or
submit online at www.ezgmfg.com by clicking on
"Resources" then "Warranty", lastly you can click on
the orange "Click Here to Register" button

WARRANTY REGISTRATION

CONTACT: _____

COMPANY: _____

ADDRESS: _____

CITY: _____ STATE: _____ ZIP: _____

TEL: (____) _____ - _____ FAX: (____) _____ - _____ CELL: (____) _____ - _____

EMAIL: _____

PURCHASED FROM: ☐ Direct ☐ Distributor: _____

PURCHASE DATE: _____ SERIAL NO. _____

**PLEASE COMPLETE THIS WARRANTY CARD, AND RETURN VIA MAIL, FAX, OR E-MAIL,
WITHIN 30 DAYS OF PURCHASE TO VALIDATE YOUR MANUFACTURER'S WARRANTY
FOR ALL EZG MANUFACTURING PRODUCTS.**

**WARRANTY PROVISIONS OF THIS MACHINE ARE HANDLED DIRECTLY THROUGH
THE MANUFACTURER.**

EZG MANUFACTURING * 1833 North Riverview Road, Malta, OH 43758 *

PHONE 1-800-417-9272 * Email: warranty@ezgmfg.com * FAX 740-962-2037

Please take a minute to fill out the survey below so that we can better serve our customers.

EZ Survey

1. WHERE DID YOU FIRST HEAR ABOUT EZG MANUFACTURING? (CHECK ONE)

☐ Masonry Magazine ☐ Website ☐ Newsletter ☐ Referral ☐ Masonry Construction

☐ Other: _____

2. WHAT INFLUENCED YOU TO BUY? ☐ QUALITY ☐ PRICE ☐ EASY TO USE ☐ OTHER

3. WHO IS YOUR SALES REPRESENTATIVE? _____

4. ARE YOU SATISFIED WITH THE CUSTOMER SERVICE YOU RECEIVED? ☐ YES ☐ NO

Explain: _____

5. WHAT OTHER EZG MANUFACTURING PRODUCTS DO YOU OWN?

6. WOULD YOU LIKE TO BE FEATURED IN OUR NEWSLETTER? ☐ YES ☐ NO

If yes, where can we reach you and what is the best time?

Comments: _____