

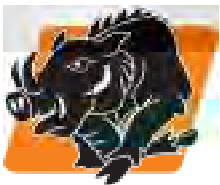


Before using this Grip-Hog-PPV, study and understand the entire Owner's Manual.



# **GRIP-HOG-PPV**

## **Owner's Manual**



**GRIP-HOG-PPV**  
**EZG MANUFACTURING**  
**1-800-417-9272**

**EZG Manufacturing**  
**405 Watertown Road**  
**Waterford, Ohio 45786**  
**(740) 749-3512 or 1-800-417-9272**  
**Fax (740) 962-2037    [www.ezgmg.com](http://www.ezgmg.com)**

# TABLE OF CONTENTS

INTRODUCTION.....	3
ABOUT THIS MANUAL.....	3
GENERAL INFORMATION.....	3
SAFETY INFORMATION.....	3
SAFETY PRECAUTIONS.....	4
OPERATING SAFETY.....	4
MACHINE DESCRIPTION.....	5-6
DAILY MAINTENANCE/INSPECTION.....	7
OPERATING INSTRUCTION.....	7
TROUBLESHOOTING.....	7
PPV.....	8-12
NOTES / SERVICE RECORDS.....	13
WARRANTY.....	14
WARRANTY REGISTRATION.....	15

# INTRODUCTION

Congratulations on purchasing one of the finest pieces of construction equipment on the market today! If this is your first EZG Manufacturing product, you will not be disappointed. If you have previously owned an EZG Manufacturing product, you will find the same high quality and dependability that you have come to expect from EZG Manufacturing.

## ABOUT THIS MANUAL





The purpose of this manual is to inform the owner/employer/and the operator, how to safely operate this piece of equipment, and make them aware of any hazards. It also contains important information regarding assembly, set up, operation, and maintenance. It is the Owner/Employer's responsibility to make sure that anyone who operates this machine understands all safety warnings. If you do not understand any items in this manual, please contact the dealer where this product was purchased, or the manufacturer at the number listed throughout this manual. If you have any suggestions about how to make this manual easier to understand, contact the manufacturer. Keep this manual available for reference wherever this piece of equipment is being used and make it available to any operators.

## GENERAL INFORMATION

Illustrations in this manual may show details or components that may not be the same as your machine. Continuing improvements to the design of this machine may have caused changes that are not included in this manual. The information in this document is subject to change without notice.

## SAFETY INFORMATION

The following safety symbols and signal words will be used throughout this manual and on the product, for your safety and the safety of others, please become familiar with their meaning and heed their warnings.

	This symbol, either used alone or with a signal word, is used to call your attention to instructions involving your safety and/or the safety of others. Failure to follow these instructions will likely result in personal injury or death.
 <b>DANGER</b>	This signal word is used to identify a hazard which, if not avoided, will result in death or serious injury.
 <b>WARNING</b>	This signal word is used to identify a hazard which, if not avoided, could result in death or serious injury.
 <b>CAUTION</b>	This signal word is used to identify a hazard which, if not avoided, could result in minor or moderate injury.
<b>NOTICE</b>	This signal word is used to identify a hazard which, if not avoided, could result in property or equipment damage. It also may be used for special instructions related to performance, maintenance or general items.

## SAFETY PRECAUTIONS



## WARNING

**Failure to obey the following safety instructions could result in DEATH or SERIOUS INJURY.**

Read and understand entire manual before operating the Grip-Hog-PPV.

For your safety and the safety of others, replace any missing or damaged warning decals by contacting the manufacturer at 1-800-417-9272.

Make sure anyone operating the Grip-Hog-PPV is thoroughly familiar with its operation. Keep all unauthorized and untrained personnel, especially children, away from Grip-Hog-PPV.



Improper maintenance can be hazardous. Read and understand this section before you perform any maintenance, service or repairs.

## OPERATING SAFETY

Always wear the proper PPE. Eye protection, hearing protection, and steel toed boots must be worn when using this device.

The PPV is capable of lifting FG lbs. (kg) head attachment.

Do not over-tighten threaded connections. Over tightening can damage threads.

Only use the Grip-Hog-PPV for its intended purpose of handling material.

## MACHINE DESCRIPTION

The Grip-Hog-PPV is the most versatile tool - a real back, knee and knuckle saver - when it comes to installing pavers and other supported materials. The vacuum pick-up venturi with a control valve installed on the T-handle allows operators to lift material up to 124 lbs. using the 6" x 8" (158 x 203 mm) head attachment. The Grip-Hog-PPV backpack vac requires a 15A 110v outlet or generator.

**\* May not function normally on porous material**

### GRIP-HOG-PPV

*(shown with vacuum backpack and optional head attachments)*



## DAILY MAINTENANCE / INSPECTION

- Perform a daily inspection prior to using this device.
- The reusable cloth filter bag should be removed, inspected, and cleaned after every job.
- Inspect the pre-motor filter (located under the cloth filter) after every use. Rinse with cold water and lay flat to dry. NO DETERGENT!
- Inspect the reusable post motor exhaust filter (on the bottom of the vacuum) every 3 months under normal use. Rinse with cold water and lay flat to dry. NO DETERGENT!
- Inspect the unit for any loose fittings or damaged parts.
- Inspect threads for damage prior to assembly.
- Inspect the foam gasket for tears or damage that would prevent a proper seal to material.
- If any defects are found, discontinue use of the device immediately.
- For replacement foam strips, contact EZG Parts Dept. at (800) 417-9272
- Only use the Grip-Hog-PPV for its intended purpose of handling material.

## OPERATING INSTRUCTIONS

To Operate the Grip-Hog-PPV:

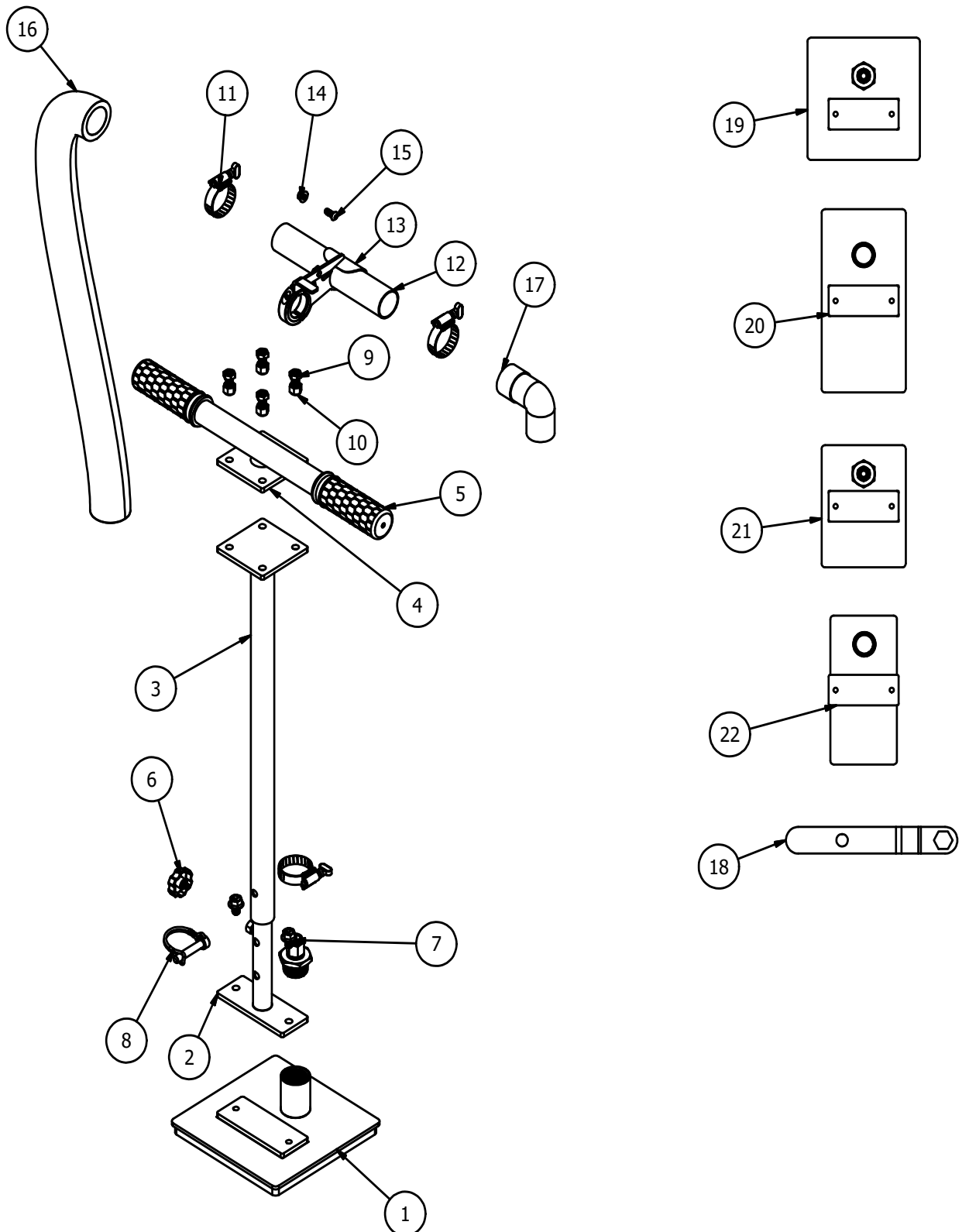
1. Remove aluminum nipple from each head, to be able to attach flex hose.
2. Verify that the weight of the material to be lifted meets the correct head attachment.
3. Position the Grip-Hog-PPV on top of the material that will be lifted
4. Plug the Grip-Hog-PPV supplied extension chord into a 15A 110v outlet or generator.
5. Position head on top of the material to be lifted.
6. Depress the control valve as vacuum is applied to material surface
7. Keep control valve depressed and use both hands to lift by the handles.
8. Lower the material in desired position and release the control valve (Note: Safe operating height should be no higher than 5" above working surface)
9. Repeat steps 2-8 as needed to complete moving of material
10. Avoid using extension chords. Doing so can cause voltage drop resulting in the motor overheating.
11. Lift pads up and down. DO NOT drag them off the product. Doing so can damage the foam head.
12. When operating the vacuum under load, use it for no more than 30 seconds, then release load and let the motor for at least 15 seconds to allow the motor to cool.

## TROUBLESHOOTING

If the Grip-Hog-PPV will not lift material:

1. Check foam head attachment for damage
2. Check air supply for damage or operating issue
3. Check material porosity (material may be too porous to lift)
4. Check material weight use appropriate head attachment.
5. Lightly spraying material with water can increase the suction in some cases.
6. Remove filter and clean weekly.
  - Depending on usage the filter may need cleaned more than once a week.

# GRIPHOGPPV



# GRIP-HOG-PPV

PARTS LIST			
ITEM	QTY	PART NUMBER	DESCRIPTION
1	1	600-A-23	Grip Hog-8"x8" Head w/Gasket & Fittings
2	1	600-A-11	Inner Center Post Weld Assembly
3	1	600-A-12	Outer Center Post Weld Assembly
4	1	600-A-14	T-Handle Welded Assembly
5	2	17-100	Honeycomb Grip Handle
6	1	09-3241	3/8-16 x 3/4 Plastic Head Thumb Screw
7	2	09-3242	3/8-16 x 3/4 Flange Hex Head Screw
8	1	09-436	3/8 x 2 3/8 Clevis Pin
9	4	09-307	3/8-16 x 1" GR5 Bolt
10	4	09-204	3/8"-16 Nylon Nut
11	3	17-133	YDS SS Hose Clamp 1 1/4-2"
12	1	600-A-13	Vacuum Breaker Mount Weld Assy
13	1	600-A-17	Vacuum Breaker Valve Weld Assy
14	1	94238A101	1/4-20 18-8 SS Flanged Locknut
15	1	09-3243	1/4-20 x 5/8 Button Head Hex Drive Screw
16	1	600-512	PPV-1-1/2"Vacuum Hose 36"L(T-Handle)
17	1	17-179	90 Degree Swivel Cuff
18	1	600-026	Grip Hog - 9/16" Wrench
19	1	600-A-23	Grip Hog-8"x8" Head w/Gasket & Fittings
20	1	600-A-24	Grip Hog-6"x12" Head w/Gasket & Fittings
21	1	600-A-25	Grip Hog-6"x8" Head w/Gasket & Fittings
22	1	600-A-26	4-3/4"x9-3/4" Head w/Gasket & Fittings

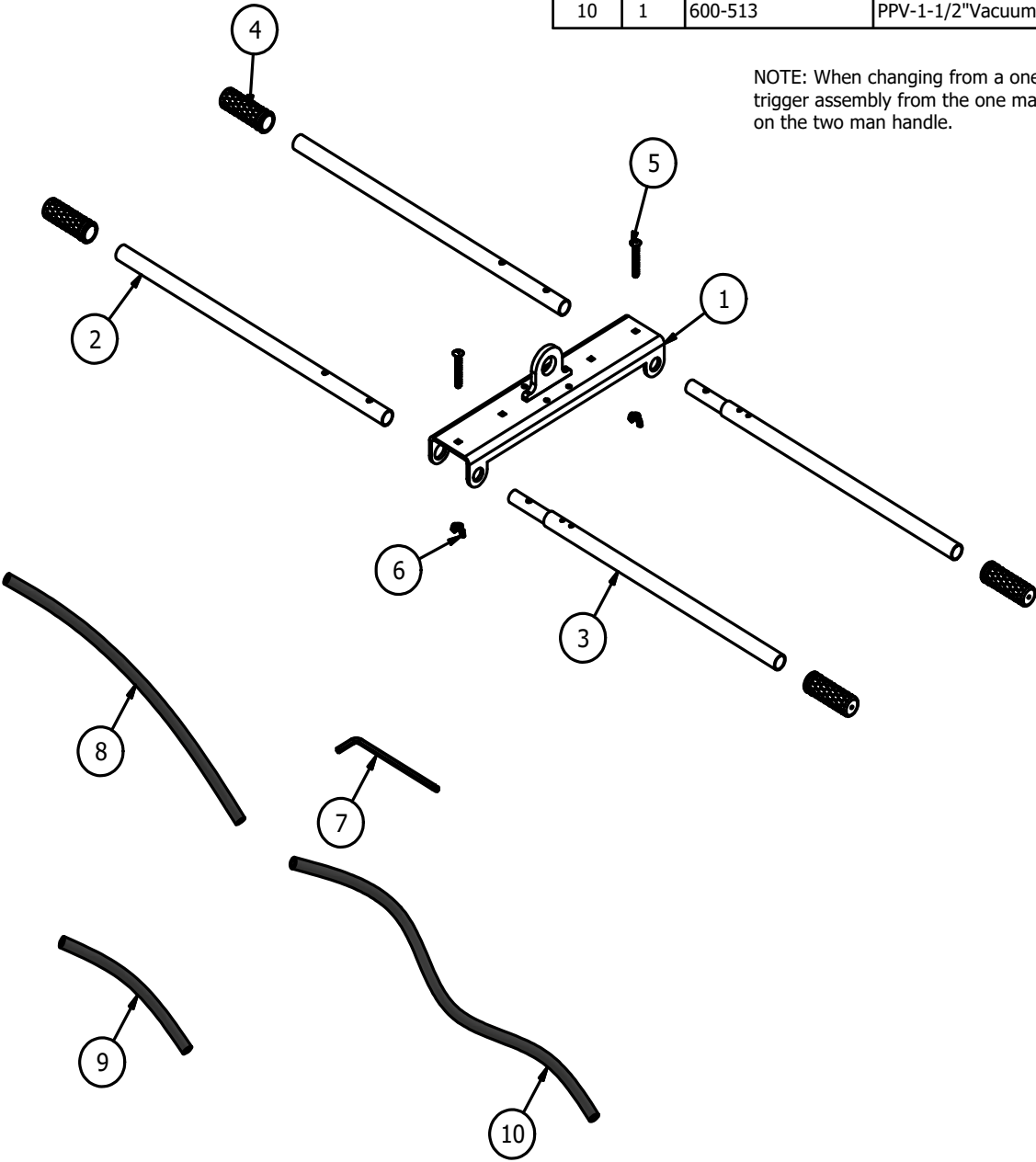
Grp-Hog-PPV Optional Head Attachments with Capacities		
PART NUMBER	DESCRIPTION	LIFT CAPACITY
600-A-21	12" x 24" (305 x 610 mm)	587 lbs. (266 KG)
600-A-22	12" x 12" (305 x 305 mm)	294 lbs. (133 KG)
600-A-23	8" x 8" (203 x 203 mm)	145 lbs. (66 KG)
600-A-24	6" x 12" (152 x 305 mm)	151 lbs. (68 KG)
600-A-25	6" x 8" (152 x 203mm)	124 lbs. (56 KG)
600-A-26	4.75" x 9.75" (121 x 248 mm)	121 lbs. (56 KG)



# GRIP-HOG-PP2H HANDLE KIT

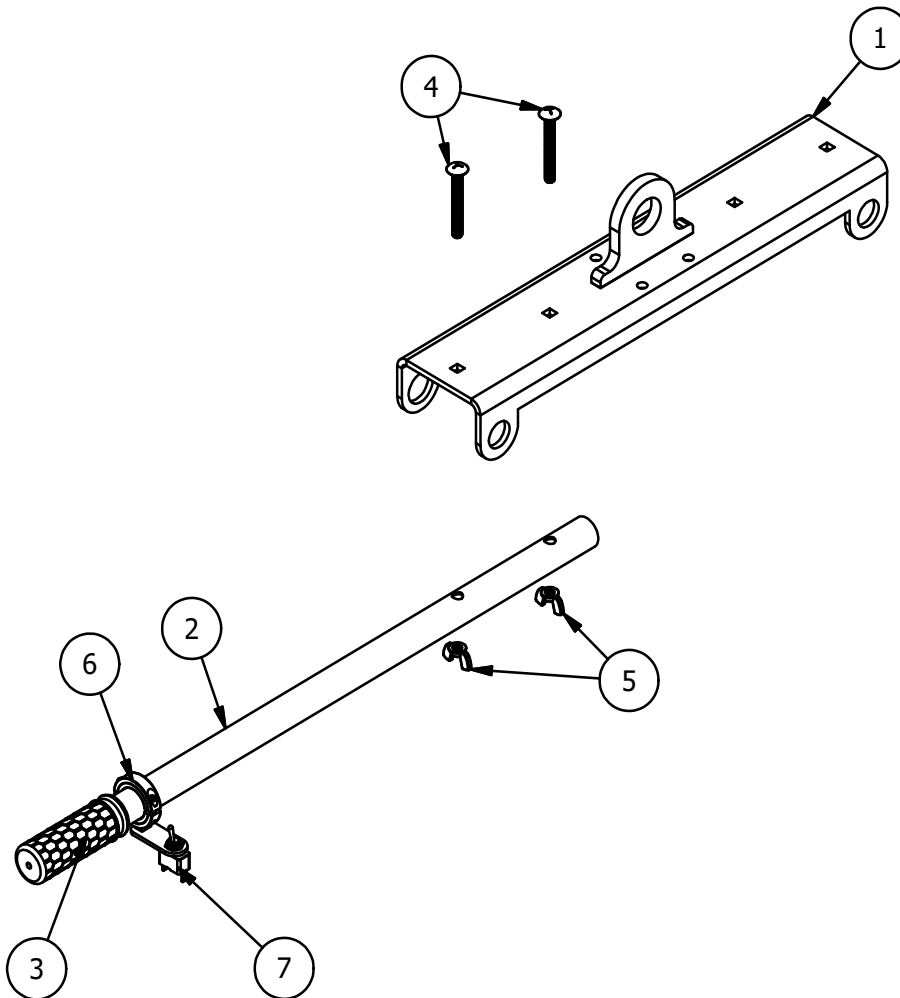
PARTS LIST			
ITEM	QTY	PART NUMBER	DESCRIPTION
1	1	600-A-30	2-Man Handle Mount w/ Lifting Lug
2	2	600-507	2 Man Handle A / Exc.Guid Handle 30"L
3	2	600-A-16	2 Man Handle B Welded Assembly
4	4	17-100	Honeycomb Grip Handle
5	2	09-3244	3/8-16 x 3 Carriage Bolt
6	2	09-294	3/8-16 Wing Nut
7	1	11-169	3/16 Hex Key Wrench
8	1	600-510	Grip Hog PPC-1/2"Black Tube 28"(V-Head)
9	1	600-511	Grip Hog PPC-1/2"Black Tube18"(H-Handle)
10	1	600-513	PPV-1-1/2"Vacuum Hose 48"L(H-Handle)

NOTE: When changing from a one man to a two man handle the trigger assembly from the one man handle needs to be installed on the two man handle.



## GRIP-HOG-PP2H (Shown as Excavator Attachment)

GRIP-HOG-PP2H EXCAVATOR PARTS LIST			
ITEM	QTY	PART NUMBER	DESCRIPTION
1	1	600-A-30	2-Man Handle Mount w/ Lifting Lug
2	1	600-507	2 Man Handle A / Exc.Guide Handle 30"L
3	1	17-100	Honeycomb Grip Handle
4	2	09-3244	3/8-16 x 3 Carriage Bolt
5	2	09-294	3/8-16 Wing Nut
6	1	600-A-15	PPB-Toggle Switch Mount Weld Assembly
7	1	17-152	Toggle Switch



## NOTES

This image shows a blank sheet of white paper with horizontal ruling lines. The lines are evenly spaced and extend across the width of the page. There are no margins, text, or other markings on the paper.

## SERVICE RECORDS

[illegible]

# Manufacturer's Warranty

EZG Manufacturing ("EZG") warrants its manufactured products to be free of defects in material or workmanship that develop under normal use for two years.



Warranty period begins on the IN-SERVICE date (date of purchase by the end user of the product, date placed in service by a rental operator, or date of any utilization). All warranty is based on the following limited warranty terms and conditions, including the disclaimer of implied warranties and consequential damages. **Warranty registration is required to establish the in-service date and for the warranty to become effective.**

## EZG Limited Warranty & Limitation of Liability Terms:

1. EZG obligation and liability under this warranty is limited to repairing or replacing parts if, after EZG's inspection, there is determined to be a defect in material or workmanship. EZG reserves the choice to repair or replace.
2. If EZG chooses to replace the part, it will be at no cost to the customer and will be made available to the EZG Distributor, Dealer, or Rental Center from whom the End User purchased the product.
3. Replacement or repair parts, installed in the product, are warranted only for the remainder of warranty period of the product as though they were the original parts.
4. EZG does not warranty engines. Engine warranty claims should be made directly to an authorized factory service center for the particular engine manufacturer.
5. EZG's warranty does not cover the normal maintenance of products or its components (such as engine tune-ups and oil & filter changes). The warranty also excludes normal replaceable wear items, i.e. gaskets, wear parts, seals, O-rings, belts, drive chains, clutches, etc. unless such items are deemed to fail due to defective material or workmanship.
6. EZG's warranty will be void if it is determined that the defect resulted from operator abuse, failure to perform normal maintenance on the product, use of non-manufacturer parts, or failure to follow documented service instructions, alterations or modifications made to the product without the written approval of EZG.
7. EZG will pay shop labor on warranty items at the EZG Shop Labor Rate in existence on the date of the warranty claim. EZG technician will determine the time allowed to complete a repair which will govern the shop labor hours to be allowed.
8. EZG will pay freight on warranty replacement parts at worldwide standard ground rates. No warranty replacement parts will be shipped air freight at the expense of EZG. EZG only pays outbound freight charges when sending warranty replacement parts to the customer via ground service. EZG does not pay any inbound freight. However, if EZG determines this to be a warranted item, EZG will then reimburse the customer for inbound freight at standard ground rates.
9. The EZG WARRANTY POLICY WILL NOT COVER THE FOLLOWING: TAXES; SHOP SUPPLIES; ENVIRONMENTAL SURCHARGES; AIR FREIGHT; TRAVEL TIME; LOSS OF TIME; INCONVENIENCE; LOSS OF RENTAL REVENUE; RENTAL COSTS OF EQUIPMENT USED TO REPLACE THE PRODUCT BEING REPAIRED; LOSS OF USE OF THE PRODUCT; COMMERCIAL LOSS; OR ANY OTHER CHARGES WHATSOEVER OR ANY LIABILITIES FOR DIRECT, INCIDENTAL, OR CONSEQUENTIAL DAMAGE OR DELAY.
10. EZG MANUFACTURING MAKES NO OTHER WARRANTY, EXPRESSED OR IMPLIED. THIS LIMITED WARRANTY IS IN LIEU OF THE WARRANTY OF MERCHANTABILITY AND FITNESS. THERE ARE NO OTHER WARRANTIES THAT EXTEND BEYOND THE DESCRIPTION ON THIS DOCUMENT.
11. No EZG Manufacturing employee or representative is authorized to change this warranty in any way or grant any other warranty unless such change is made in writing and signed by an officer of EZG Manufacturing.

**WARRANTY REGISTRATION IS REQUIRED  
TO ESTABLISH THE IN-SERVICE DATE AND  
FOR THE WARRANTY TO BE EFFECTIVE.**



## WARRANTY EXCLUSIONS:

EZG 2-year manufacturing warranty excludes sourced products tools and consumables such as but not limited to marking paint, gloves, snips, tape measures, chisels, hammers, caulk guns, straps, brooms, sprayers, squares, levels, tripods, masks, blades, and wheels unless otherwise noted. Other exclusions may apply.



1-800-417-9272 | [ezgmfg.com](http://ezgmfg.com) | [sales@ezgmfg.com](mailto:sales@ezgmfg.com)  
1833 N. Riverview Rd., Malta, OH 43758

EZG Manufacturing is a division of EZ Grout Corporation. All EZG Manufacturing products are backed by our two-year warranty on parts unless otherwise stated and are now available for order. Information in this catalog is subject to change.

Fax Warranty Registration form to 740-962-2037 or  
submit online at [www.ezgmfg.com](http://www.ezgmfg.com) by clicking on  
"Resources" then "Warranty", lastly you can click on  
the orange "Click Here to Register" button

## WARRANTY REGISTRATION

CONTACT: \_\_\_\_\_

COMPANY: \_\_\_\_\_

ADDRESS: \_\_\_\_\_

CITY: \_\_\_\_\_ STATE: \_\_\_\_\_ ZIP: \_\_\_\_\_

TEL: (\_\_\_\_) \_\_\_\_\_ - \_\_\_\_\_ FAX: (\_\_\_\_) \_\_\_\_\_ - \_\_\_\_\_ CELL: (\_\_\_\_) \_\_\_\_\_ - \_\_\_\_\_

EMAIL: \_\_\_\_\_

PURCHASED FROM: ☐ Direct ☐ Distributor: \_\_\_\_\_

PURCHASE DATE: \_\_\_\_\_ SERIAL NO. \_\_\_\_\_

**PLEASE COMPLETE THIS WARRANTY CARD, AND RETURN VIA MAIL, FAX, OR E-MAIL,  
WITHIN 30 DAYS OF PURCHASE TO VALIDATE YOUR MANUFACTURER'S WARRANTY  
FOR ALL EZG MANUFACTURING PRODUCTS.**

**WARRANTY PROVISIONS OF THIS MACHINE ARE HANDLED DIRECTLY THROUGH  
THE MANUFACTURER.**

**EZG MANUFACTURING \* 1833 North Riverview Road, Malta, OH 43758 \***

**PHONE 1-800-417-9272 \* Email: [warranty@ezgmfg.com](mailto:warranty@ezgmfg.com) \* FAX 740-962-2037**

*Please take a minute to fill out the survey below so that we can better serve our customers.*

## EZ Survey

**1. WHERE DID YOU FIRST HEAR ABOUT EZG MANUFACTURING? (CHECK ONE)**

☐ Masonry Magazine ☐ Website ☐ Newsletter ☐ Referral ☐ Masonry Construction

☐ Other: \_\_\_\_\_

**2. WHAT INFLUENCED YOU TO BUY? ☐ QUALITY ☐ PRICE ☐ EASY TO USE ☐ OTHER**

**3. WHO IS YOUR SALES REPRESENTATIVE? \_\_\_\_\_**

**4. ARE YOU SATISFIED WITH THE CUSTOMER SERVICE YOU RECEIVED? ☐ YES ☐ NO**

**Explain:** \_\_\_\_\_

**5. WHAT OTHER EZG MANUFACTURING PRODUCTS DO YOU OWN?**

**6. WOULD YOU LIKE TO BE FEATURED IN OUR NEWSLETTER? ☐ YES ☐ NO**

**If yes, where can we reach you and what is the best time?**

**Comments:** \_\_\_\_\_