

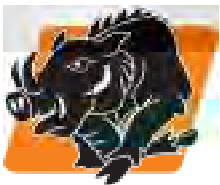


Before using this Grip-Hog-PPB, study and understand the entire Owner's Manual.



# **GRIP-HOG-PPB**

## **Owner's Manual**



**GRIP-HOG-PPB**  
**EZG MANUFACTURING**  
**1-800-417-9272**

**EZG Manufacturing**  
**405 Watertown Road**  
**Waterford, Ohio 45786**  
**(740) 749-3512 or 1-800-417-9272**  
**Fax (740) 962-2037    [www.ezgmfg.com](http://www.ezgmfg.com)**

# TABLE OF CONTENTS

INTRODUCTION.....	3
ABOUT THIS MANUAL.....	3
GENERAL INFORMATION.....	3
SAFETY INFORMATION.....	3
SAFETY PRECAUTIONS.....	4
OPERATING SAFETY.....	5
MACHINE DESCRIPTION.....	5
DAILYMAINTENANCE/INSPECTION.....	6
OPERATING INSTRUCTION.....	7
TROUBLESHOOTING.....	6
PPB.....	7-10
NOTES / SERVICE RECORDS.....	12
WARRANTY.....	13
WARRANTY REGISTRATION.....	14

# INTRODUCTION

Congratulations on purchasing one of the finest pieces of construction equipment on the market today! If this is your first EZG Manufacturing product, you will not be disappointed. If you have previously owned an EZG Manufacturing product, you will find the same high quality and dependability that you have come to expect from EZG Manufacturing.

## ABOUT THIS MANUAL





The purpose of this manual is to inform the owner/employer/and the operator, how to safely operate this piece of equipment, and make them aware of any hazards. It also contains important information regarding assembly, set up, operation, and maintenance. It is the Owner/Employer's responsibility to make sure that anyone who operates this machine understands all safety warnings. If you do not understand any items in this manual, please contact the dealer where this product was purchased, or the manufacturer at the number listed throughout this manual. If you have any suggestions about how to make this manual easier to understand, contact the manufacturer. Keep this manual available for reference wherever this piece of equipment is being used and make it available to any operators.

## GENERAL INFORMATION

Illustrations in this manual may show details or components that may not be the same as your machine. Continuing improvements to the design of this machine may have caused changes that are not included in this manual. The information in this document is subject to change without notice.

## SAFETY INFORMATION

The following safety symbols and signal words will be used throughout this manual and on the product, for your safety and the safety of others, please become familiar with their meaning and heed their warnings.

	This symbol, either used alone or with a signal word, is used to call your attention to instructions involving your safety and/or the safety of others. Failure to follow these instructions will likely result in personal injury or death.
 <b>DANGER</b>	This signal word is used to identify a hazard which, if not avoided, will result in death or serious injury.
 <b>WARNING</b>	This signal word is used to identify a hazard which, if not avoided, could result in death or serious injury.
 <b>CAUTION</b>	This signal word is used to identify a hazard which, if not avoided, could result in minor or moderate injury.
<b>NOTICE</b>	This signal word is used to identify a hazard which, if not avoided, could result in property or equipment damage. It also may be used for special instructions related to performance, maintenance or general items.

## SAFETY PRECAUTIONS



### WARNING

**Failure to obey the following safety instructions could result in DEATH or SERIOUS INJURY.**

Read and understand entire manual before operating the Grip-Hog-PPB.

For your safety and the safety of others, replace any missing or damaged warning decals by contacting the manufacturer at 1-800-417-9272.

Make sure anyone operating the Grip-Hog-PPB is thoroughly familiar with its operation. Keep all unauthorized and untrained personnel, especially children, away from Grip-Hog-PPB.



Improper maintenance can be hazardous. Read and understand this section before you perform any maintenance, service or repairs.

## OPERATING SAFETY

Always wear the proper PPE. Eye protection, hearing protection, and steel toed boots with metatarsal guards must be worn when using this device. The Grip-Hog-PPB is capable of lifting 90 lbs. using a 6" x 8" (152 x 203 mm) head attachment.

Be sure the battery is fully charged before starting.

Do not over-tighten threaded connections. Over tightening can damage threads.

Only use the Grip-Hog-PPB for its intended purpose of handling material.

## MACHINE DESCRIPTION

The Grip-Hog-PPB is the most versatile tool - a real back, knee and knuckle saver - when it comes to installing pavers and other supported materials. The T-handle allows operators to lift material up to 90 lbs. (41 kg) using a 6" x 8" (152 x 203 mm) head attachment. An 18V battery is used to operate the the Grip-Hog-PPB.

**\* Not intended for lifting dry cast pavers or other porous materials**

**GRIP-HOG-PPB** *(shown with H handle configuration and 12" x 24" (305 x 610 mm) head attachment).*



## DAILY MAINTENANCE / INSPECTION

- Perform a daily inspection prior to using this device.
- Inspect the unit for any loose fittings or damaged parts.
- Inspect threads for damage prior to assembly.
- Inspect the foam strip for tears or damage that would prevent a proper seal to material.
- If any defects are found, discontinue use of the device immediately.
- Only use the Grip-Hog-PPB for its intended purpose of handling material.
- Inspect battery for corrosion.

## OPERATING INSTRUCTIONS

The Grip-Hog-PPB works by applying air flow through a specialized valve. The airflow generates vacuum to the foam head. The Grip-Hog-PPB weighs 34 lbs. (15 kg). Before operating the Grip-Hog-PPB, it should be assembled and properly set up.

To Operate the Grip-Hog-PPB:

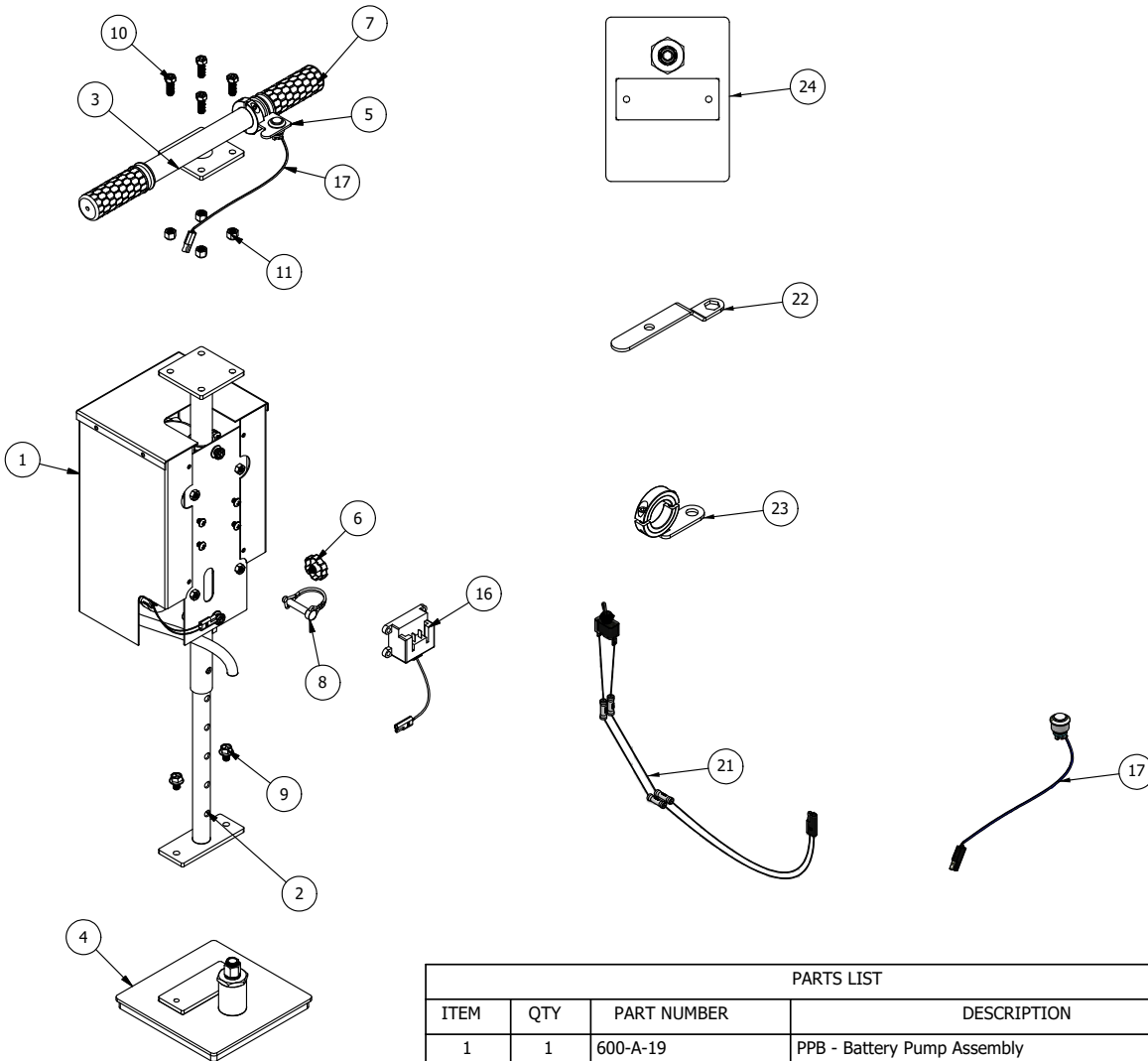
1. Verify that the material to be lifted is correct for the head attachment being used.
2. Position the Grip-Hog-PPB on top of the material that will be lifted.
3. Use the toggle switch to apply vacuum to material surface.
4. Keep toggle switch in same position and use both hands to lift by the handles.
5. Lower the material in desired position and move the toggle switch (Note: Safe operating height should be no higher than 5" above working surface)
6. Be sure to lift straight up after releasing material to avoid damage to the foam gasket.
7. Repeat steps 2-6 as needed to complete moving of material

## TROUBLESHOOTING

If the Grip-Hog-PPB will not lift material:

1. Check the foam gasket on the head for damage
2. Check air supply / hoses for damage or operating issue
3. Check material porosity (material may be too porous to lift)
4. Check material weight (material may be too heavy to lift)

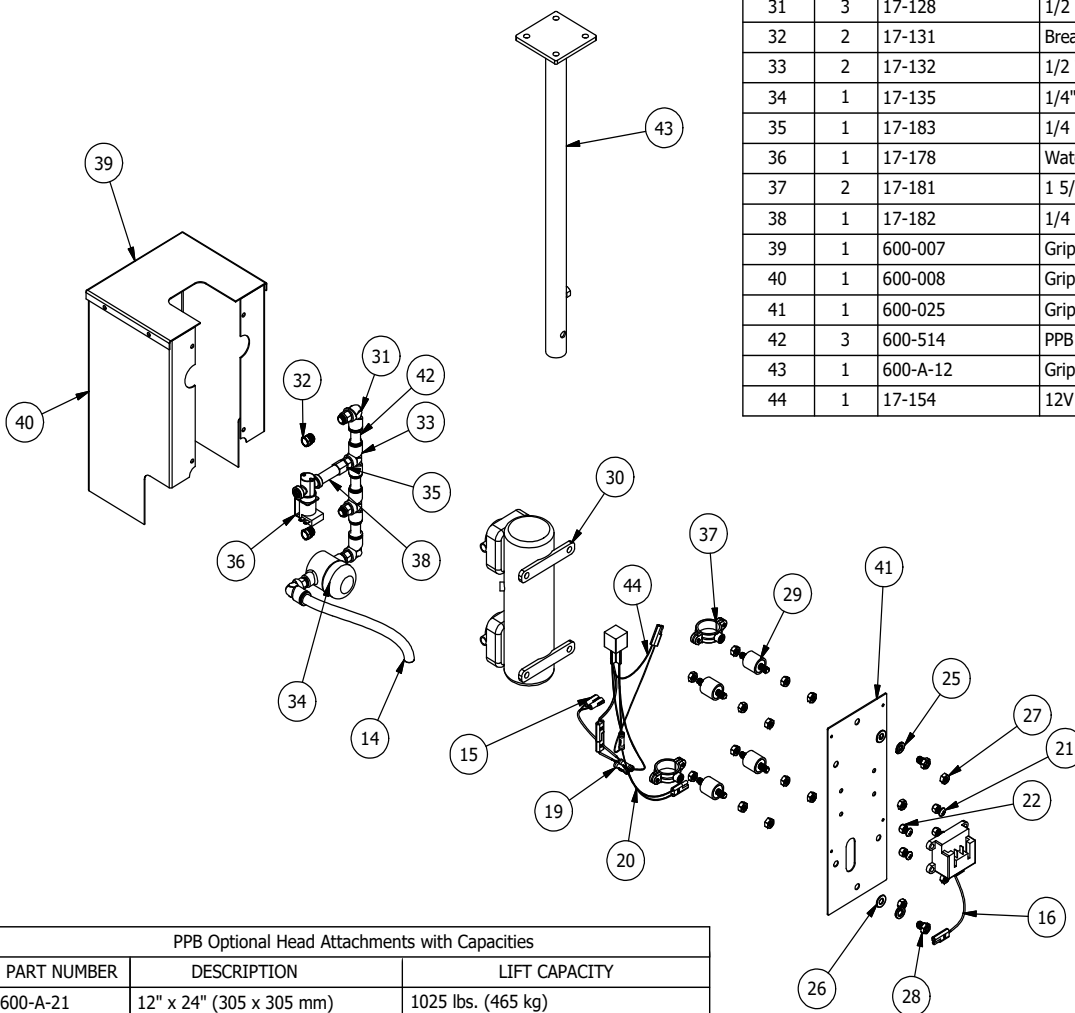
# GRIPHOGPPB



PARTS LIST			
ITEM	QTY	PART NUMBER	DESCRIPTION
1	1	600-A-19	PPB - Battery Pump Assembly
2	1	600-A-11	Inner Center Post Weld Assembly
3	1	600-A-14	T-Handle Welded Assembly
4	1	600-A-23	Grip Hog-8"x8" Head w/Gasket & Fittings
5	1	600-A-29	PPB-Momentary Switch Mount Weld Assembly
6	1	09-3241	3/8-16 x 3/4 Plastic Head Thumb Screw
7	2	17-100	Honeycomb Grip Handle
8	1	09-436	3/8 x 2 3/8 Clevis Pin
9	2	09-3242	3/8-16 x 3/4 Flange Hex Head Screw
10	4	09-307	3/8-16 x 1" GR5 Bolt
11	4	09-204	3/8"-16 Nylon Nut
12	1	17-139	19mm Momentary Push Button
16	1	03-1104	18V Battery & Charger - Grip Hogs
17	1	600-A-32	T Handle - Momentary Switch Assembly
21	1	600-A-31	H Handle - Toggle Switch Assembly
22	1	600-026	Grip Hog - 9/16" Wrench
23	1	600-A-15	PPB-Toggle Switch Mount Weld Assembly
24	1	600-A-25	Grip Hog-6"x8" Head w/Gasket & Fittings

# GRIPHOGPPB

PARTS LIST			
ITEM	QTY	PART NUMBER	DESCRIPTION
14	1	600-509	Grip Hog PPC - 1/2" Black Tube 16" (T-Handle)
15	2	03-116	Insulated Terminal 16-14 Wire Gauge
16	1	03-1104	18V Battery & Charger - Grip Hogs
19	3	BSV14Q	Insulated Butt Splices
20	1	17-150	Harness #2
21	4	17-157	1/4-20 x 1/2 Pan Head Screw SS
22	4	09-200	1/4"-20 Nylon Nut
25	2	09-102	3/8" Lock Washer
26	2	09-105	5/16" Flat Washer
27	16	09-284	M8 x 1.25mm Thread Class 8 Nut
28	2	09-3152	3/8-16 x 1/2 GR5 Bolt
29	4	17-104	M8 Studded Vibration Mount
30	1	17-123	Diaphragm Vacuum Pump
31	3	17-128	1/2 Tube 90 to 1/4 Thd Push-In Fitting
32	2	17-131	Breather Vent - 1/4" NPT - Pavemor
33	2	17-132	1/2 Tube x 1/2 Tube x 1/4 Thread Tee
34	1	17-135	1/4" NPT Plastic Vacuum Filter
35	1	17-183	1/4 OD x 1/4 NPT Female Push/Connect
36	1	17-178	Water Solenoid 12V 1/4"
37	2	17-181	1 5/16 Snug Hold Threaded Rod Clamp
38	1	17-182	1/4 OD Plastic Tubing
39	1	600-007	Grip Hog - PPB Top Guard
40	1	600-008	Grip Hog - PPB Side Guard
41	1	600-025	Grip Hog - 5"x13" Plate Battery Pump/Vac
42	3	600-514	PPB - 1/2" Black Tubing 2-3/4" Long
43	1	600-A-12	Grip Hog - Outer Center Post Weld Assembly
44	1	17-154	12V 2 Pole Connector (Male Brown Wire)



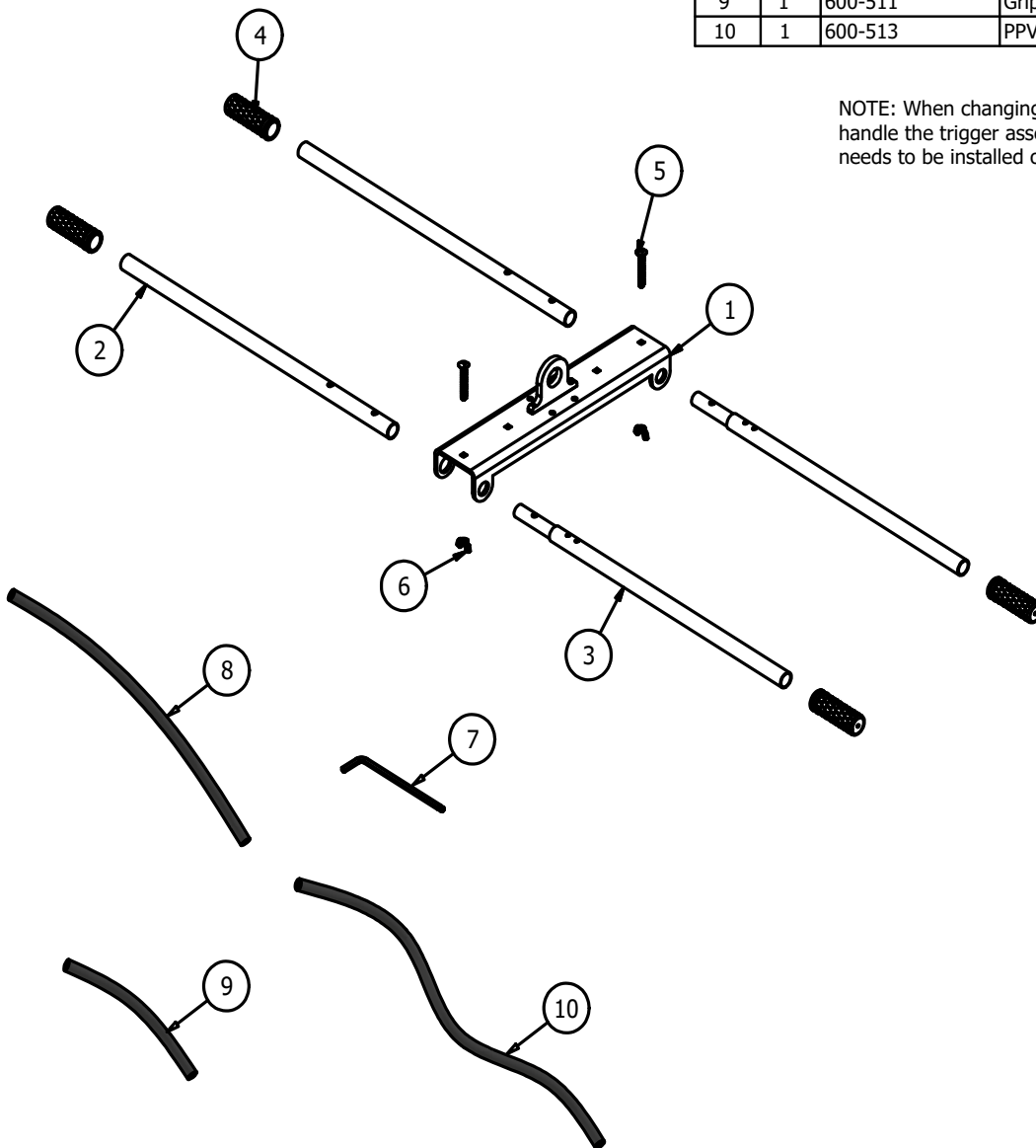
PPB Optional Head Attachments with Capacities		
PART NUMBER	DESCRIPTION	LIFT CAPACITY
600-A-21	12" x 24" (305 x 305 mm)	1025 lbs. (465 kg)
600-A-22	12" x 12" (305 x 305 mm)	503 lbs. (228 kg)
600-A-23	8" x 8" (203 x 203 mm)	227 lbs. (103 kg)
600-A-24	6" x 12" (152 x 305 mm)	310 lbs. (141 kg)
600-A-25	6" x 8" (152 x 203 mm)	154 lbs. (70 kg)
600-A-26	4.75" x 9.75" (121 x 248 mm)	175 lbs. (79 kg)
600-A-27	4" x 6" (102 x 152 mm)	90 lbs. (41 kg)



# GRIP-HOG-PP2H HANDLE KIT

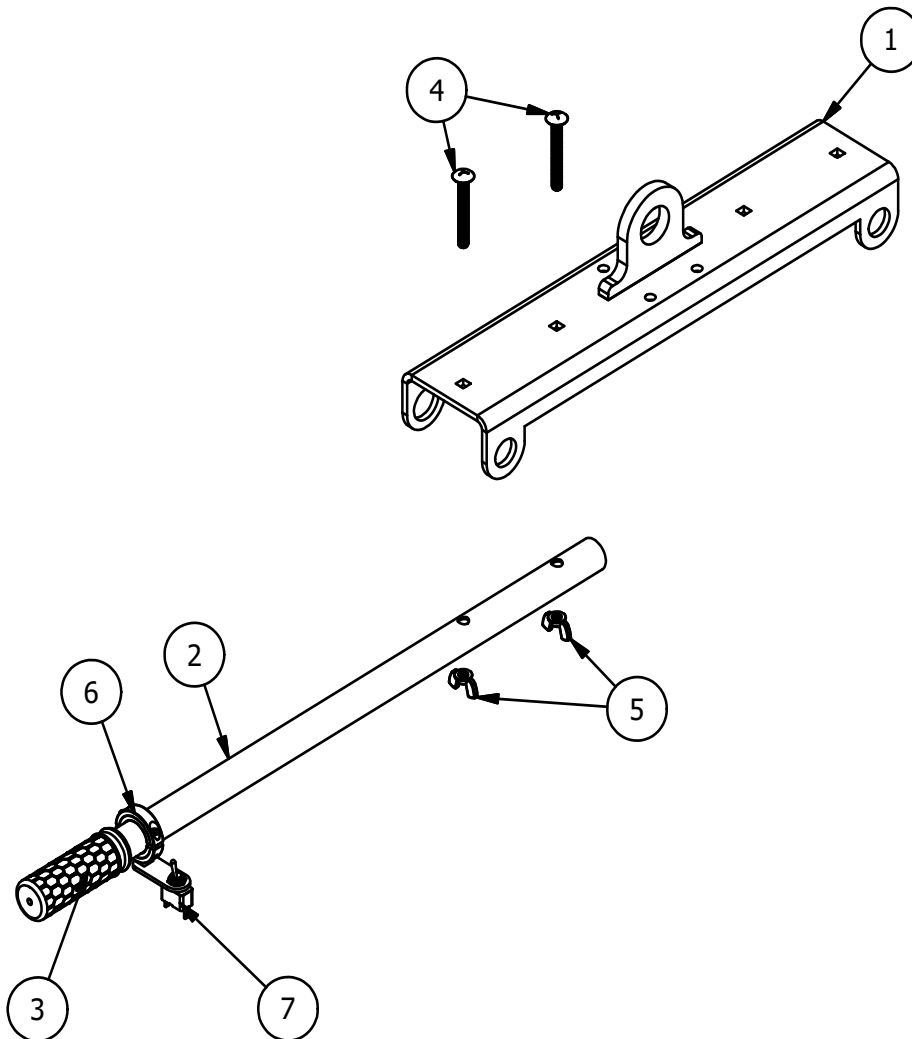
PARTS LIST			
ITEM	QTY	PART NUMBER	DESCRIPTION
1	1	600-A-30	2-Man Handle Mount w/ Lifting Lug
2	2	600-507	2 Man Handle A / Exc.Guidance Handle 30"L
3	2	600-A-16	2 Man Handle B Welded Assembly
4	4	17-100	Honeycomb Grip Handle
5	2	09-3244	3/8-16 x 3 Carriage Bolt
6	2	09-294	3/8-16 Wing Nut
7	1	11-169	3/16 Hex Key Wrench
8	1	600-510	Grip Hog PPC-1/2"Black Tube 28"(V-Head)
9	1	600-511	Grip Hog PPC-1/2"Black Tube18"(H-Handle)
10	1	600-513	PPV-1-1/2"Vacuum Hose 48"L(H-Handle)

NOTE: When changing from a one man to a two man handle the trigger assembly from the one man handle needs to be installed on the two man handle.



## GRIP-HOG-PP2H (Shown as Excavator Attachment)

GRIP-HOG-PP2H EXCAVATOR PARTS LIST			
ITEM	QTY	PART NUMBER	DESCRIPTION
1	1	600-A-30	2-Man Handle Mount w/ Lifting Lug
2	1	600-507	2 Man Handle A / Exc.Guide Handle 30"L
3	1	17-100	Honeycomb Grip Handle
4	2	09-3244	3/8-16 x 3 Carriage Bolt
5	2	09-294	3/8-16 Wing Nut
6	1	600-A-15	PPB-Toggle Switch Mount Weld Assembly
7	1	17-152	Toggle Switch



## NOTES

[illegible]

## SERVICE RECORDS

[illegible]

# Manufacturer's Warranty

EZG Manufacturing ("EZG") warrants its manufactured products to be free of defects in material or workmanship that develop under normal use for two years.



Warranty period begins on the IN-SERVICE date (date of purchase by the end user of the product, date placed in service by a rental operator, or date of any utilization). All warranty is based on the following limited warranty terms and conditions, including the disclaimer of implied warranties and consequential damages. **Warranty registration is required to establish the in-service date and for the warranty to become effective.**

## EZG Limited Warranty & Limitation of Liability Terms:

1. EZG obligation and liability under this warranty is limited to repairing or replacing parts if, after EZG's inspection, there is determined to be a defect in material or workmanship. EZG reserves the choice to repair or replace.
2. If EZG chooses to replace the part, it will be at no cost to the customer and will be made available to the EZG Distributor, Dealer, or Rental Center from whom the End User purchased the product.
3. Replacement or repair parts, installed in the product, are warranted only for the remainder of warranty period of the product as though they were the original parts.
4. EZG does not warranty engines. Engine warranty claims should be made directly to an authorized factory service center for the particular engine manufacturer.
5. EZG's warranty does not cover the normal maintenance of products or its components (such as engine tune-ups and oil & filter changes). The warranty also excludes normal replaceable wear items, i.e. gaskets, wear parts, seals, O-rings, belts, drive chains, clutches, etc. unless such items are deemed to fail due to defective material or workmanship.
6. EZG's warranty will be void if it is determined that the defect resulted from operator abuse, failure to perform normal maintenance on the product, use of non-manufacturer parts, or failure to follow documented service instructions, alterations or modifications made to the product without the written approval of EZG.
7. EZG will pay shop labor on warranty items at the EZG Shop Labor Rate in existence on the date of the warranty claim. EZG technician will determine the time allowed to complete a repair which will govern the shop labor hours to be allowed.
8. EZG will pay freight on warranty replacement parts at worldwide standard ground rates. No warranty replacement parts will be shipped air freight at the expense of EZG. EZG only pays outbound freight charges when sending warranty replacement parts to the customer via ground service. EZG does not pay any inbound freight. However, if EZG determines this to be a warranted item, EZG will then reimburse the customer for inbound freight at standard ground rates.
9. The EZG WARRANTY POLICY WILL NOT COVER THE FOLLOWING: TAXES; SHOP SUPPLIES; ENVIRONMENTAL SURCHARGES; AIR FREIGHT; TRAVEL TIME; LOSS OF TIME; INCONVENIENCE; LOSS OF RENTAL REVENUE; RENTAL COSTS OF EQUIPMENT USED TO REPLACE THE PRODUCT BEING REPAIRED; LOSS OF USE OF THE PRODUCT; COMMERCIAL LOSS; OR ANY OTHER CHARGES WHATSOEVER OR ANY LIABILITIES FOR DIRECT, INCIDENTAL, OR CONSEQUENTIAL DAMAGE OR DELAY.
10. EZG MANUFACTURING MAKES NO OTHER WARRANTY, EXPRESSED OR IMPLIED. THIS LIMITED WARRANTY IS IN LIEU OF THE WARRANTY OF MERCHANTABILITY AND FITNESS. THERE ARE NO OTHER WARRANTIES THAT EXTEND BEYOND THE DESCRIPTION ON THIS DOCUMENT.
11. No EZG Manufacturing employee or representative is authorized to change this warranty in any way or grant any other warranty unless such change is made in writing and signed by an officer of EZG Manufacturing.

**WARRANTY REGISTRATION IS REQUIRED  
TO ESTABLISH THE IN-SERVICE DATE AND  
FOR THE WARRANTY TO BE EFFECTIVE.**



## WARRANTY EXCLUSIONS:

EZG 2-year manufacturing warranty excludes sourced products tools and consumables such as but not limited to marking paint, gloves, snips, tape measures, chisels, hammers, caulk guns, straps, brooms, sprayers, squares, levels, tripods, masks, blades, and wheels unless otherwise noted. Other exclusions may apply.



1-800-417-9272 | [ezgmfg.com](http://ezgmfg.com) | [sales@ezgmfg.com](mailto:sales@ezgmfg.com)  
1833 N. Riverview Rd., Malta, OH 43758

EZG Manufacturing is a division of EZ Grout Corporation. All EZG Manufacturing products are backed by our two-year warranty on parts unless otherwise stated and are now available for order. Information in this catalog is subject to change.

# WARRANTY REGISTRATION

Fax Warranty Registration form to 740-962-2037  
or submit online by visiting [ezgmfg.com/serial-registration](http://ezgmfg.com/serial-registration).

CONTACT: \_\_\_\_\_  
COMPANY: \_\_\_\_\_  
ADDRESS: \_\_\_\_\_  
CITY: \_\_\_\_\_ STATE \_\_\_\_\_ ZIP \_\_\_\_\_  
PHONE: \_\_\_\_\_ FAX \_\_\_\_\_ CELL \_\_\_\_\_  
EMAIL: \_\_\_\_\_  
PURCHASED FROM: ☐ Direct ☐ Distribution \_\_\_\_\_  
PURCHASED DATE: \_\_\_\_\_ SERIAL NO. \_\_\_\_\_

PLEASE COMPLETE THIS WARRANTY CARD AND RETURN VIA MAIL, FAX OR E-MAIL  
WITHIN 30 DAYS OF PURCHASE TO VALIDATE YOUR MANUFACTURER'S WARRANTY  
FOR ALL EZG MANUFACTURING PRODUCTS.  
WARRANTY PROVISIONS OF THIS MACHINE ARE HANDLED DIRECTLY THROUGH  
THE MANUFACTURER.

EZG MANUFACTURING \* 1833 North Riverview Road, Malta, OH 43758 \*  
PHONE 1-800-417-9272 \* Email: [warranty@ezgmfg.com](mailto:warranty@ezgmfg.com) \* FAX 740-962-2037

*Please take a minute to fill out the survey below so that we better serve our customers.*

## EZ Survey

1. WHERE DID YOU FIRST HEAR ABOUT EZG MANUFACTURING (CHECK ONE)

☐ Masonry Magazine ☐ Website ☐ Newsletter ☐ Referral ☐ Masonry Construction  
☐ Other: \_\_\_\_\_

2. WHAT INFLUENCED YOU TO BUY? ☐ QUALITY ☐ PRICE ☐ EASY TO USE ☐ OTHER

3. WHO IS YOUR SALES REPRESENTATIVE? \_\_\_\_\_

4. ARE YOU SATISFIED WITH THE CUSTOMER SERVICE YOU RECEIVED? ☐ YES ☐ NO

Explain: \_\_\_\_\_

5. WHAT OTHER EZG MANUFACTURING PRODUCTS DO YOU OWN?

6. WOULD YOU LIKE TO BE FEATURED IN OUR NEWSLETTER? ☐ YES ☐ NO

If yes, where can we reach you and what is the best time?

Comments: \_\_\_\_\_