



Before using this Fence Hog[®], study and understand the entire Owner's Manual.

Serial Number _____



FH08-24
FH08-36
Fence Hog[®]
Owner's Manual
CE



Fence Hog[®]
EZG MANUFACTURING
1-800-417-9272

EZG Manufacturing
1833 North Riverview Road
Malta, Ohio 43758
(740) 962-2024 or 1-800-417-9272
Fax (740) 962-2037 www.ezgmfg.com

TABLE OF CONTENTS

INTRODUCTION.....	3
ABOUT THIS MANUAL.....	3
GENERAL INFORMATION.....	3
SAFETY INFORMATION.....	3
SAFETY PRECAUTIONS.....	4
MACHINE DESCRIPTION.....	5
OPERATING SAFETY.....	6
MAINTENANCE.....	7
OPERATING INSTRUCTIONS.....	8-9
WARNING / SAFETY LABELS.....	10-11
FH08-24-CLS.....	12
FH08-36-CLS.....	13
FH24-2X (24" - 2 FT Extension).....	14
FH24-4X (24" - 4 FT Extension).....	15
FH36-2X (36" - 2 FT Extension).....	16
FH36-4X (36" - 4 FT Extension).....	17
FHS99(Chain Link Stretching).....	18
FHWP.....	19
FHWS99-24 (Woven wire Stretcher).....	20
FHWS99-36 (Woven wire Stretcher).....	21
FH SCHEMATIC.....	22
TA SCHEMATIC.....	23
TILT.....	24
NOTES / SERVICE RECORDS.....	25
WARRANTY.....	26
WARRANTY REGISTRATION.....	27

INTRODUCTION

Congratulations on purchasing one of the finest pieces of construction equipment on the market today! If this is your first EZG Manufacturing product, you will not be disappointed. If you have previously owned an EZG Manufacturing product, you will find the same high quality and dependability that you have come to expect from EZG Manufacturing.

ABOUT THIS MANUAL





The purpose of this manual is to inform the owner/employer/and the operator, how to safely operate this piece of equipment, and make them aware of any hazards. It also contains important information regarding assembly, set up, operation, and maintenance. It is the Owner/Employer's responsibility to make sure that anyone who operates this machine understands all safety warnings. If you do not understand any items in this manual, please contact the dealer where this product was purchased, or the manufacturer at the number listed throughout this manual. If you have any suggestions about how to make this manual easier to understand, contact the manufacturer. Keep this manual available for reference wherever this piece of equipment is being used and make it available to any operators.

GENERAL INFORMATION

Illustrations in this manual may show details or components that may not be the same as your machine. Continuing improvements to the design of this machine may have caused changes that are not included in this manual. The information in this document is subject to change without notice.

SAFETY INFORMATION

The following safety symbols and signal words will be used throughout this manual and on the product, for your safety and the safety of others, please become familiar with their meaning and heed their warnings.

	This symbol, either used alone or with a signal word, is used to call your attention to instructions involving your safety and/or the safety of others. Failure to follow these instructions will likely result in personal injury or death.
 DANGER	This signal word is used to identify a hazard which, if not avoided, will result in death or serious injury.
 WARNING	This signal word is used to identify a hazard which, if not avoided, could result in death or serious injury.
 CAUTION	This signal word is used to identify a hazard which, if not avoided, could result in minor or moderate injury.
NOTICE	This signal word is used to identify a hazard which, if not avoided, could result in property or equipment damage. It also may be used for special instructions related to performance, maintenance or general items.

SAFETY PRECAUTIONS



WARNING

Failure to obey the following safety instructions could result in DEATH or SERIOUS INJURY.

Read and understand entire manual before operating the Fence Hog®.

For your safety and the safety of others, replace any missing or damaged warning decals by contacting the manufacturer at 1-800-417-9272.

Make sure anyone operating the Fence Hog is thoroughly familiar with its operation. Keep all unauthorized and untrained personnel, especially children, away from Fence Hog®.



Improper maintenance can be hazardous. Read and understand this section before you perform any maintenance, service or repairs.



CAUTION

Fence Hog components painted yellow have been determined to be a PINCH POINT HAZARD and are also labeled. Stay clear of these areas during operation.

General Safety

- This machine is heavy and must not be lifted single-handedly; either get help or use suitable lifting equipment..
- This machine is to be used for its intended application only.
- This machine must only be operated by well-trained personnel.
- The owner of this machine must observe, and train the user to observe, the effective laws of labor protection in the country of application.
- Personal Protective Equipment (PPE) must be worn by the operator whenever the equipment is being used.
- Cordon off the work area and keep members of the public and unauthorised personnel at a safe distance.
- This machine must be operated on ground where stability is guaranteed. When working near the rim of excavated trenches, use the machine properly so that the machine may not fall down or collapse the excavation.
- Never remove or tamper with any fitted guards; they are there for your own protection. If they are damaged or missing, DO NOT USE THE MACHINE until the guard has been replaced or repaired.
- Do not operate the machine when you are ill, feeling tired or when under the influence of alcohol or drugs.
- This machine is designed to eliminate the possible risks arising from the use of it. However, risks DO reside, and these residual risks are not clearly recognisable and may cause personal injury or property damage, and possibly death. If such unpredictable and unrecognisable risks become apparent, the machine must be stopped immediately, and operator or his supervisor must take appropriate measure to eliminate such risks. It is sometimes necessary that the manufacturer must be informed of such event for future counter measuring.

MACHINE DESCRIPTION

Dispenses Woven Wire, Chain Link, and Other Fence Types

EASY FENCING, EVERY TIME

Developed with the assistance of professional fence builders, the Fence Hog® unit was designed to satisfy customer requests for a machine that picks up and dispenses cumbersome rolls of chain link fence easily, with no physical effort.

Powered by the hydraulic used in the Skid-Steer Loader, the uniquely designed cage mechanism opens and tilts to retrieve the fence roll from the ground. For the fence contractor, this means no more unrolling fence by hand and using extra men to stand it up.

FH08-24 / FH08-36



OPERATING SAFETY

1. The Fence Hog® is a fence-dispensing device. Used outside of this scope may cause damage to equipment or could result in injury, or death.



2. Make sure anyone operating the Fence Hog® is thoroughly trained with its operation. Keep all unauthorized and untrained personnel, especially children, away from the Fence Hog®.

3. Consult lift equipment manufacturer's specifications to insure load capacity is not exceeded.

Model	Empty Weight	With 4ft. Extension
FH08-24	1150lbs. (521.6 kg)	1500lbs. (680.4 kg)
FH08-36	1350 lbs. (612.3 kg)	1775lbs. (805.1 kg)

Do not exceed Maximum Gross Weight.

4. Always make sure Fence Hog® is securely fastened to skid steer.



5. Stay clear of gate opening while machine is running. Keep all body parts, solid objects, clothing, and jewelry away from all moving parts.

6. Never perform any work on the Fence Hog® while it is running. Before working on the Fence Hog®, stop skid steer and disconnect the hydraulic hose to prevent accidental starting.



7. Avoid contact with hot hydraulic fluid. Allow system to cool before performing any repairs or service.

8. Never stand under an elevated Fence Hog®.

9. Never ride the Fence Hog®.

10. Never operate the Fence Hog® under the influence of alcohol, drugs, or medications.

11. Use only factory authorized parts.

12. Inspect all hoses and components for cracks, leaks, abrasions, and general wear before each use. Replace if damaged before using.

13. Inspect all hoses and fittings for signs of damage, wear, scrapes, kinks or cracking. Replace hoses if any of these conditions are found. It is recommended to replace all hydraulic hoses every 5 years.



14. Always wear approved safety glasses, hard hat, hearing protection, and safety shoes when operating or servicing a Fence Hog®.

15. Do not use the Fence Hog® as a lifting device and do not load more than one roll of fence fabric or wire in the Fence Hog® at a time.

16. **NOTE: MAXIMUM CARRIER PRESSURE IS 3045 PSI / 210 BAR.
MAXIMUM RELIEF PRESSURE IS 2200 PSI / 152 BAR.
COMPLETE MANIFOLD RATING IS 3500 PSI / 207 BAR.**

MAINTENANCE

Grease fittings located on the Fence Hog® and Extension. See drawing for location of fittings. All grease fittings should be greased before each use with a grease that meets or exceeds DIN 51825:2004-06-KP 2 N-20. EZG recommends a Lithium Complex NLGI 2 grease.

Obtaining Spare Parts

Spare parts for your Fence Hog® may be obtained by the following procedure.

1. Record the Model number and Serial Number from the Serial Number Tag located on the valve mount bar of the Fence Hog®.
2. Using the parts reference table in this manual, record part number, serial number, and component.
3. Contact your local Fence Hog® dealer or EZ Manufacturing at 1-800-417-9272 with the serial number, part number, and component.
4. Hydraulic fluid should be a mineral based meeting or exceeding DIN 51524-2:2006-09.



Warning Decals - for your safety and the safety of others, replace any damaged or missing warning decals by contacting the manufacturer at 1-800-417-9272.

OPERATING INSTRUCTIONS

Loading Wire

1. Attach the Fence Hog® to your skid steer. Consult skid steer owner's manual for attachment procedure.
2. Connect hydraulic hoses to skid steer auxiliary hydraulic couplers.
3. Using the auxiliary hydraulics, cycle all hydraulic motions to verify the Fence Hog® is operating correctly. Verify that the cage opens and closes completely and moves smoothly throughout its travel of operation.
4. Open the Fence Hog® to its widest point and position your skid steer so that a roll of wire is directly in front of it.
5. Then lift the boom and tilt the Fence Hog® down.
6. Move the skid steer forward until the turntable of the Fence Hog® aligns with the bottom of the roll of fence.
7. Lower the Fence Hog® over the roll of wire and begin closing the gates. Once the gates are mostly closed, lift the boom and tilt the Fence Hog® up.
8. The roll of wire will fall back into the cage of the Fence Hog®. Close the Fence Hog® tightly.

Note: For Woven Wire - Install Roll Centering Rod through the center of roll and into turntable to hold roll upright by removing the Roll Centering Rod from the square tube on the back of the Fence Hog® and sliding it through the center of wire roll and into the hole in the turntable. Then, install Centering Rod support over Centering Rod.

OPERATING INSTRUCTIONS

Installing Fence

1. After loading a roll of wire, move the skid steer parallel to the row of fence posts and attach the beginning of the roll to the first fence post.
2. Slowly drive the skid steer along the fence line and the roll will start to unwind. Continue to desired point.

Standard Chain Link Stretcher: At stretching point, pull Handle and rotate Stretching Bar until fingers point outward. Insert fingers through the fabric. Skip to Step 3.

Optional Woven Wire Stretcher: Install optional woven wire stretcher to the gate ends. Using the holes provided, drive the wedges into stretcher to hold wire, then drive forward to stretch to desired tension.

3. Maneuver the skid steer so the fabric is aligned with the fence line. **DRIVE FORWARD** to stretch to desired tension.
4. Attach fabric to post once desired tension is reached.
5. Relieve pressure on fabric (remove locking wedges if applicable) and return stretcher to stowed position.
6. Repeat steps 1 through 5 as needed.

WARNING / SAFETY LABELS



Forklift Lifting Point
P/N 16-1012
QTY 2



Hard Hat, Eye & Hearing Protection
P/N 16-1017
QTY 1



Hand Protection Required
P/N 16-1013
QTY 1



Read Manual Before Operating
P/N 16-1015
QTY 1



Foot Protection Required
P/N 16-1023
QTY 1

WARNING / SAFETY LABELS



Release of Pressure Warning
P/N 16104
QTY 1



Hand Crush Warning
P/N 16-1011
QTY 14



Lock
P/N 16-1019
QTY 1



Unlocked
P/N 16-1020
QTY 1

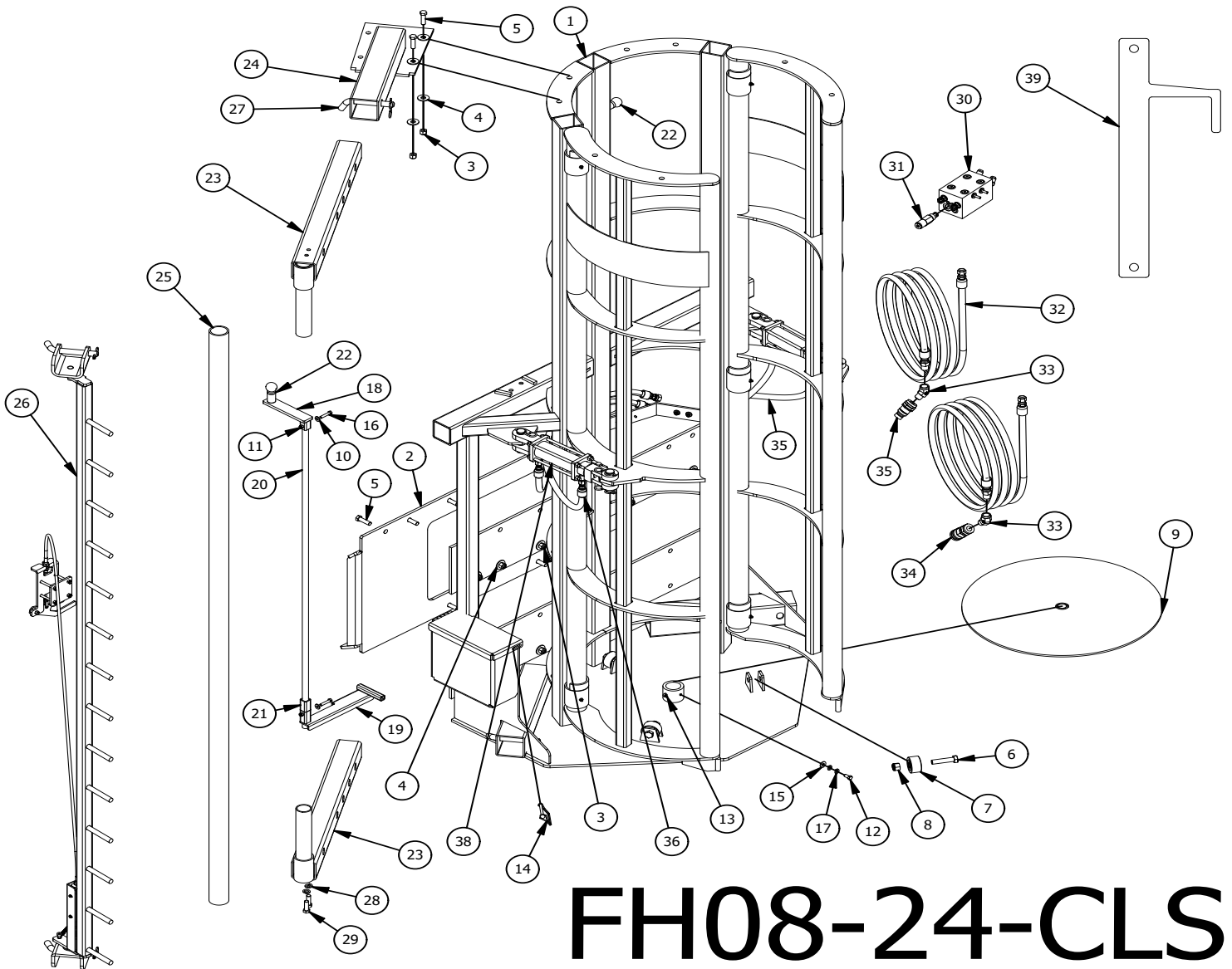


Lubricant Grease
P/N 16-1021
QTY 1

FH08-24-CLS

ITEM	QTY	PART NUMBER	DESCRIPTION
1	1	FH24-A-1	Frame Welded Assembly
2	1	FH-A-9	Universal Attachment Plate
3	10	09-208	1/2" -13 Nylon Nut
4	12	09-107	1/2" Flat Washer
5	10	09-325	1/2"-13 x 1 3/4" Grade 5 Bolt
6	3	09-319	5/8"-11 X 2 3/4" Grade 5 Bolt
7	3	15-139	Support Cam Roller
8	3	09-210	5/8"-11 Nylon Nut
9	1	FH24-A-14	Turntable Assembly
10	2	09-104	1/4" Flat Washer
11	2	09-202	5/16"-18 Nylon Nut
12	1	09-355	3/8"-16 x 3/4" Grade 5 Bolt
13	1	09-600	1/8" 90° Grease Fitting
14	1	09-407	Latch Pin
15	1	09-105	5/16" Flat Washer
16	2	09-303	5/16"-18 x 1 1/2" Grade 5 Bolt
17	2	09-102	3/8" Lock Washer
18	1	FH24-A-12	Brake Handle Assembly
19	1	FH24-A-13	Turntable Brake Stop Assembly

ITEM	QTY	PART NUMBER	DESCRIPTION
20	1	FH-518	Brake Rod
21	1	FH-547	Brake Rod Spacer
22	2	09-409	Knob Spring
23	2	FH-A-4	Drive Forward Outrigger
24	1	FH24-A-7	Upper Drive Forward Outrigger Pocket Assembly
25	1	FH-538	Drive Forward Arm
26	1	FHS99	Chain Link Stretcher 99"
27	4	09-425	Bent Pin
28	2	09-103	1/2" Lock Washer
29	2	09-317	1/2" - 13 x 1.5" Grade 5 Bolt
30	1	02-6016	Relief & Holding Valve Assembly (3045 psi / 210 bar)
31	1	02-634	Deltrol Bi-Directional Relief (2000psi / 138 bar)
32	2	FH-A-6	FH Supply Hose Assembly (4000psi / 276 bar)
33	2	02-2114	1/2" Male x 1/2" female street 45°
34	1	02-221	1/2" Female Disconnect
35	1	02-222	1/2" Male Disconnect
36	2	FH24-A-9	FH24 LH Cyl Hose Assy (5000psi / 345 bar)
37	2	FH24-A-10	FH24 RH Cyl Hose Assy (5000psi / 345 bar)
38	2	02-708	Hyd Cyl 2"Bore x 4"Stroke (2500psi / 172 bar)
39	5	Hanger-A-1	Fence Hog Hanger

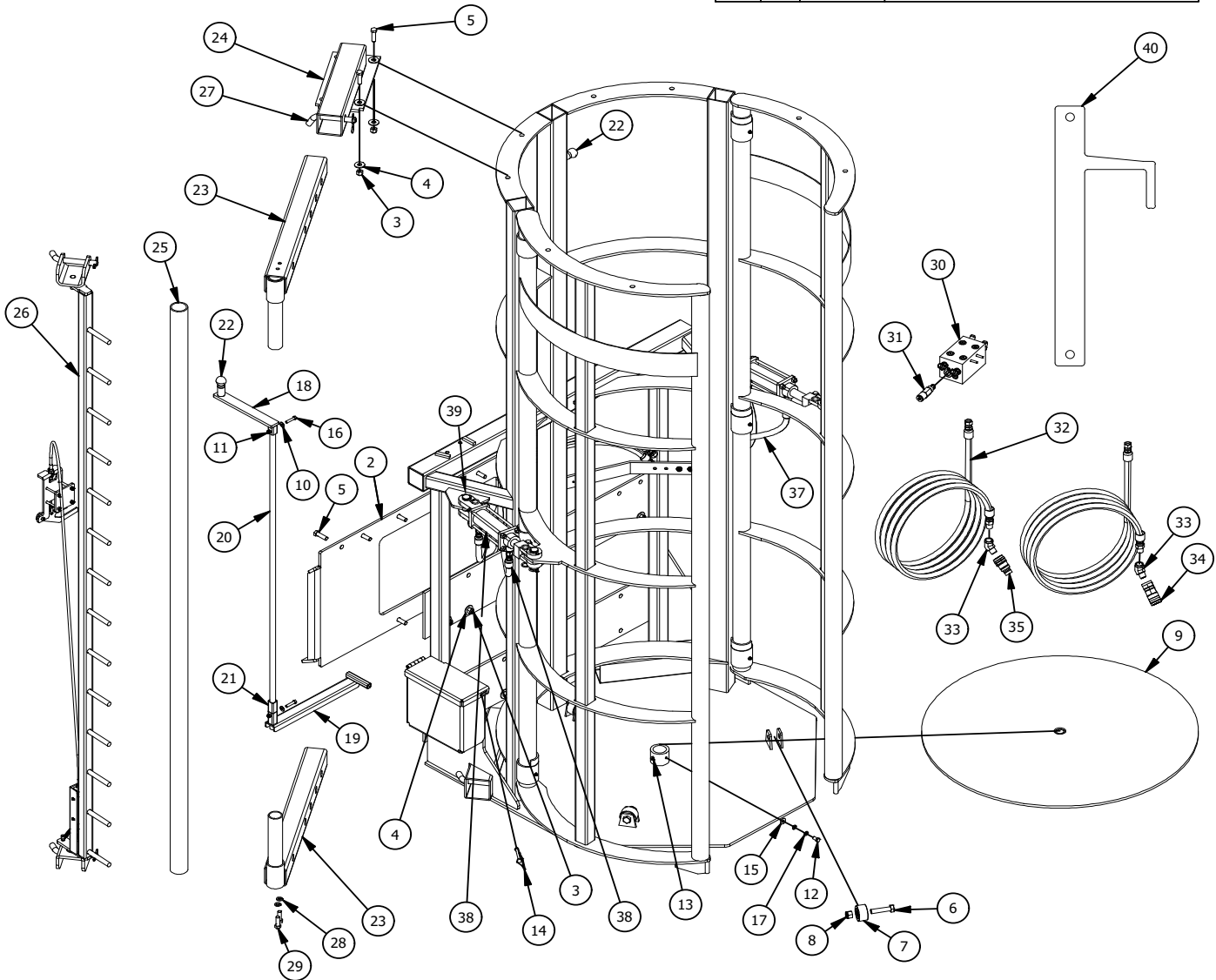


FH08-24-CLS

FH08-36-CLS

ITEM	QTY	PART NUMBER	DESCRIPTION
1	1	FH36-A-1	Welded Gate and Frame Assembly
2	1	FH-A-9	Universal Skidsteer Attachment Plate
3	10	09-208	1/2" -13 Nylon Nut
4	12	09-107	1/2" Flat Washer
5	10	09-325	1/2"-13 x 1 3/4" Grade 5 Bolt
6	3	09-319	5/8"-11 X 2 3/4" Grade 5 Bolt
7	3	15-139	Support Cam Roller
8	3	09-210	5/8"-11 Nylon Nut
9	1	FH36-A-14	Turntable
10	2	09-104	1/4" Flat Washer
11	2	09-202	5/16"-18 Nylon Nut
12	1	09-355	3/8"-16 x 3/4" Grade 5 Bolt
13	1	09-600	1/8" 90° Grease Fitting
14	1	09-407	5/16" Latch Pin
15	1	09-105	5/16" Flat Washer
16	2	09-303	5/16"-18 x 1 1/2" Grade 5 Bolt
17	2	09-102	3/8" Lock Washer
18	1	FH36-A-12	Turntable Brake Handle Assembly
19	1	FH36-A-13	Turntable Brake Stop Arm Assembly

ITEM	QTY	PART NUMBER	DESCRIPTION
20	1	FH-518	Brake Rod
21	1	FH-547	Brake Rod Spacer
22	1	09-409	Knob Spring
23	2	FH-A-4	Drive Forward Outrigger
24	1	FH36-A-7	Upper Drive Forward Arm Pocket Assembly
25	1	FH-538	Drive Forward Arm
26	1	FHS99	Chain Link Stretcher
27	2	09-425	Bent Pin
28	2	09-103	1/2" Lock Washer
29	2	09-317	1/2" -13 x 1 1/2" Grade 5 Bolt
30	1	02-6016	Relief & Holding Valve Assembly (3045 psi / 210 bar)
31	1	02-634	Detroit Bi-Directional Relief (2000psi / 138 bar)
32	2	FH-A-6	FH Supply Hose Assembly (4000psi / 276 bar)
33	2	02-2114	1/2" Male Pipe x 1/2" Female Pipe Street 45°
34	1	02-221	1/2" Female Disconnect
35	1	02-222	1/2" Male Disconnect
37	1	FH36-A-9	FH36 LH Cyl Hose (5000psi / 345 bar)
38	1	FH36-A-10	FH36 RH Cyl Hose (5000psi / 345 bar)
39	2	02-708	Hyd Cyl 2"Bore x 4"Stroke (2500psi / 172 bar)
40	1	Hanger-A-1	Fence Hog Hanger

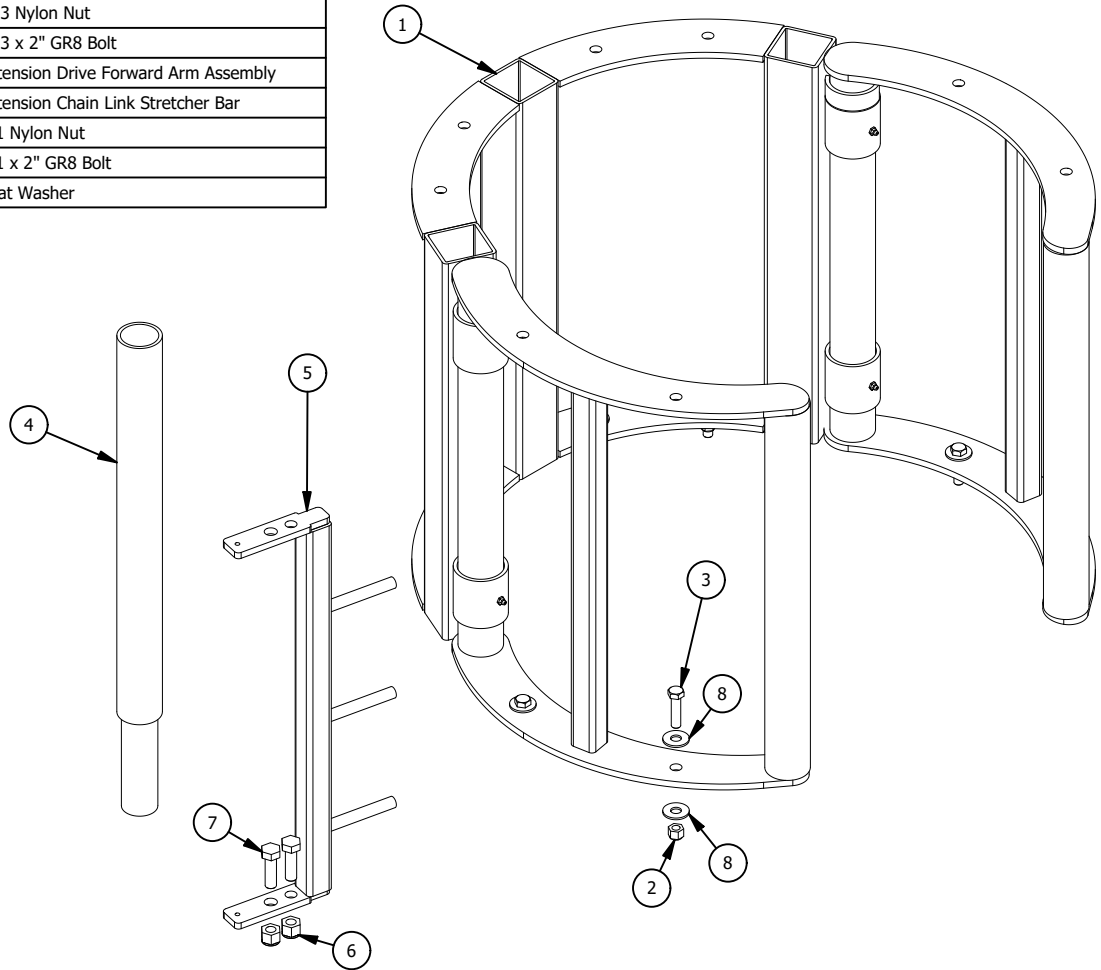


FH08-36-CLS

FH24-2X (24" - 2 FT. EXTENSION)

ITEM	QTY	PART NUMBER	DESCRIPTION
1	1	FH24-2X-A-1	2ft. Extension Welded Frame and Gate Assembly
2	8	09-208	1/2" -13 Nylon Nut
3	8	09-328	1/2" -13 x 2" GR8 Bolt
4	1	FH-A-5	2ft. Extension Drive Forward Arm Assembly
5	1	FHS-A-4	2ft. Extension Chain Link Stretcher Bar
6	2	09-210	5/8"-11 Nylon Nut
7	2	09-362	5/8"-11 x 2" GR8 Bolt
8	16	09-107	1/2" Flat Washer

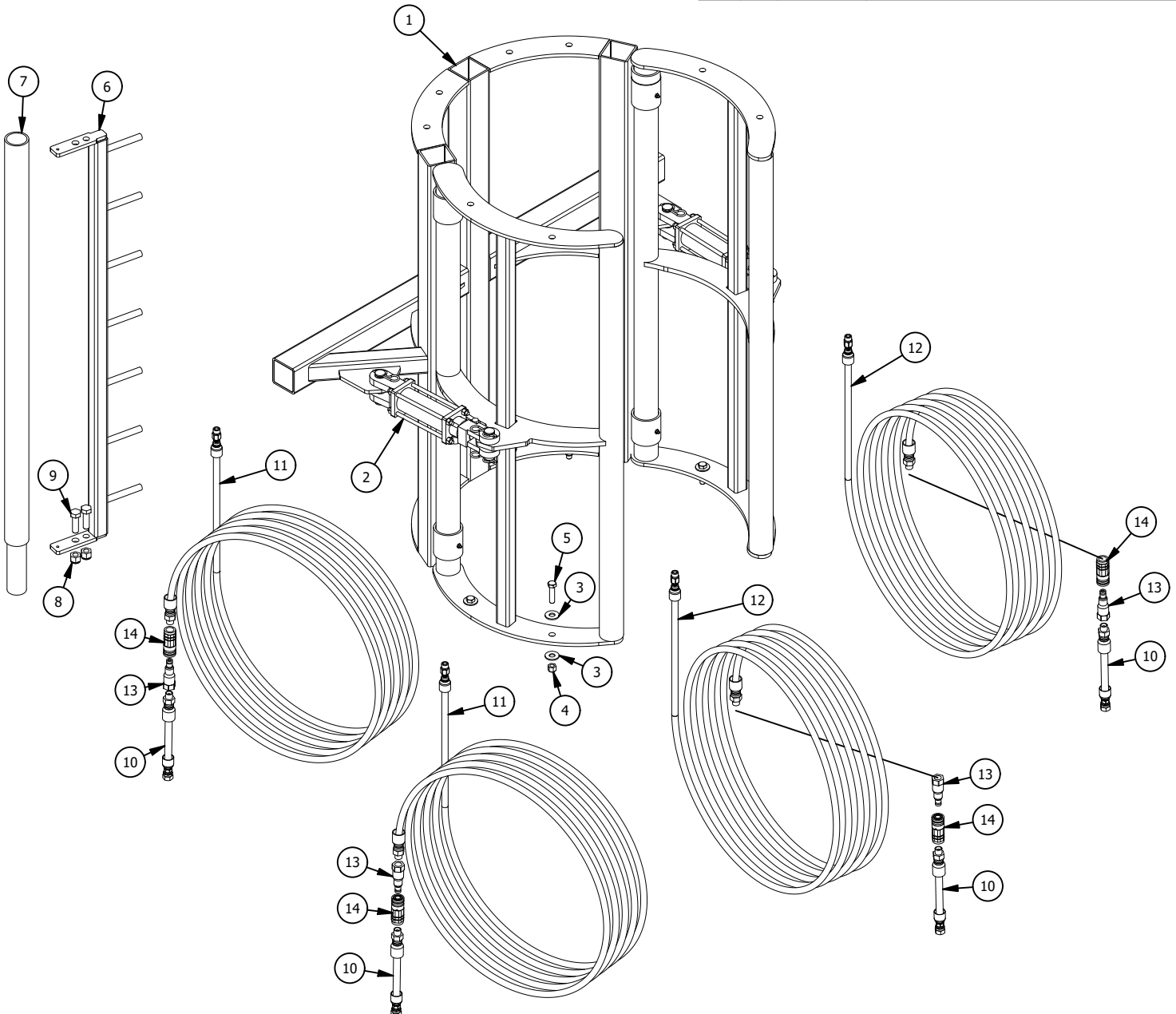
FH24-2X



FH24-4X (24" - 4 FT. EXTENSION)

FH24-4X

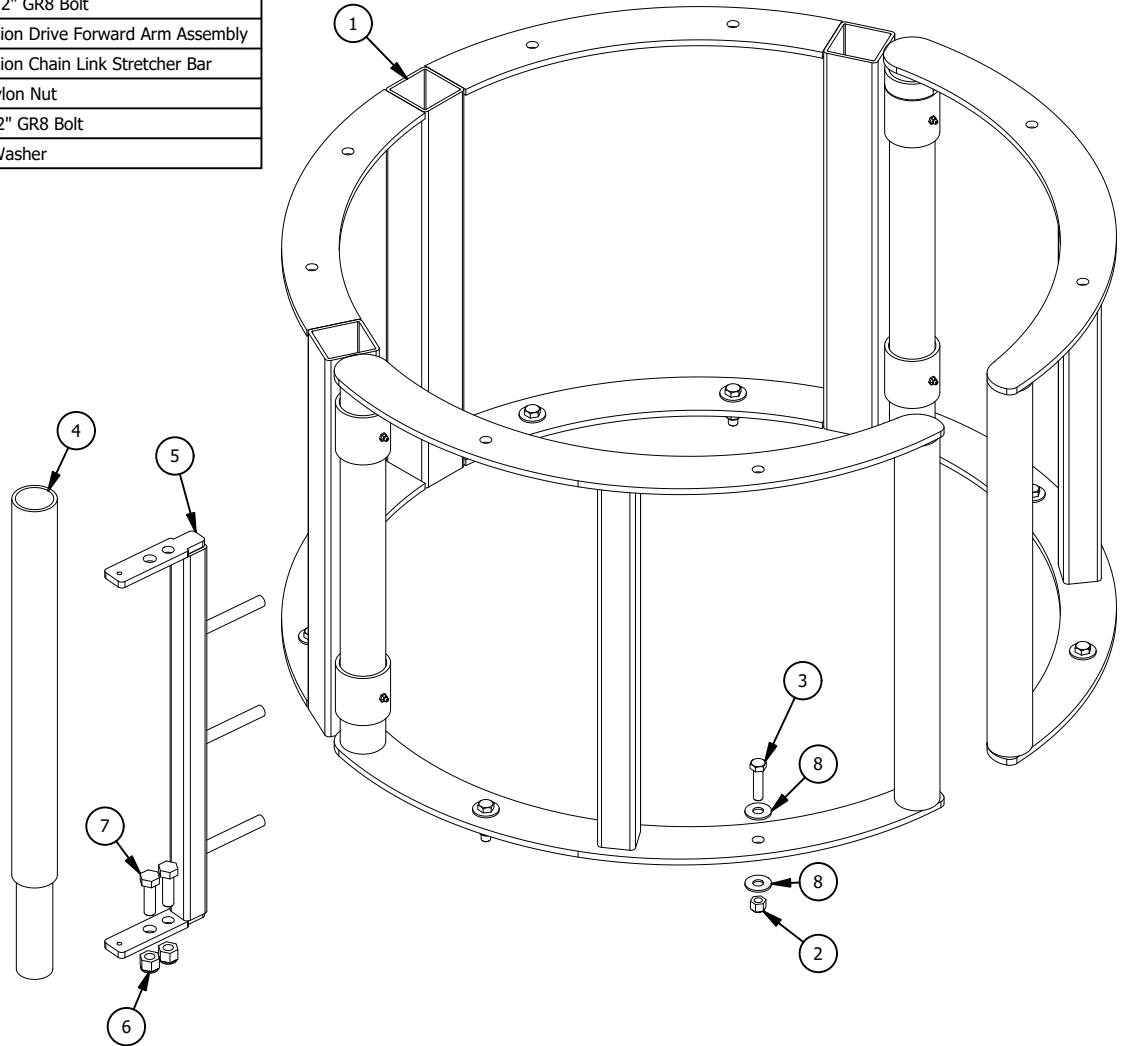
ITEM	QTY	PART NUMBER	DESCRIPTION
1	1	FH24-4X-A-1	4ft. Extension Welded Frame and Gate Assembly
2	2	02-708	Hyd Cyl 2"Bore x 4"Stroke (2500psi / 172 bar)
3	16	09-107	1/2" Flat Washer
4	8	09-208	1/2" -13 Nylon Nut
5	8	09-328	1/2" -13 x 2" GR8 Bolt
6	1	FHS-A-5	4ft. Extension Chain Link Stretcher Bar
7	1	FH-A-8	4ft. Extension Drive Forward Arm Assembly
8	2	09-210	5/8"-11 Nylon Nut
9	2	09-362	5/8"-11 x 2" GR8 Bolt
10	4	FH-A-12	4ft. Ext. Hose Assy (5000psi / 345 bar)
11	2	FH-A-13	4ft. Ext. LH Cyl Hose Assy (5000psi / 345 bar)
12	2	FH-A-14	4ft. Ext. RH Cyl Hose Assy (5000psi / 345 bar)
13	4	02-2117	Male QD Coupler-Conn Pres 3/8"Body-1/2"NPT
14	4	02-2118	Female QD Coupler - 3/8 Body With 1/2" NPT



FH36-2X (36" - 2 FT. EXTENSION)

ITEM	QTY	PART NUMBER	DESCRIPTION
1	1	FH36-2X-A-1	2ft. Extension Welded Frame and Assembly
2	8	09-208	1/2" -13 Nylon Nut
3	8	09-328	1/2" -13 x 2" GR8 Bolt
4	1	FH-A-5	2ft. Extension Drive Forward Arm Assembly
5	1	FHS-A-4	2ft. Extension Chain Link Stretcher Bar
6	2	09-210	5/8"-11 Nylon Nut
7	2	09-362	5/8"-11 x 2" GR8 Bolt
8	16	09-107	1/2" Flat Washer

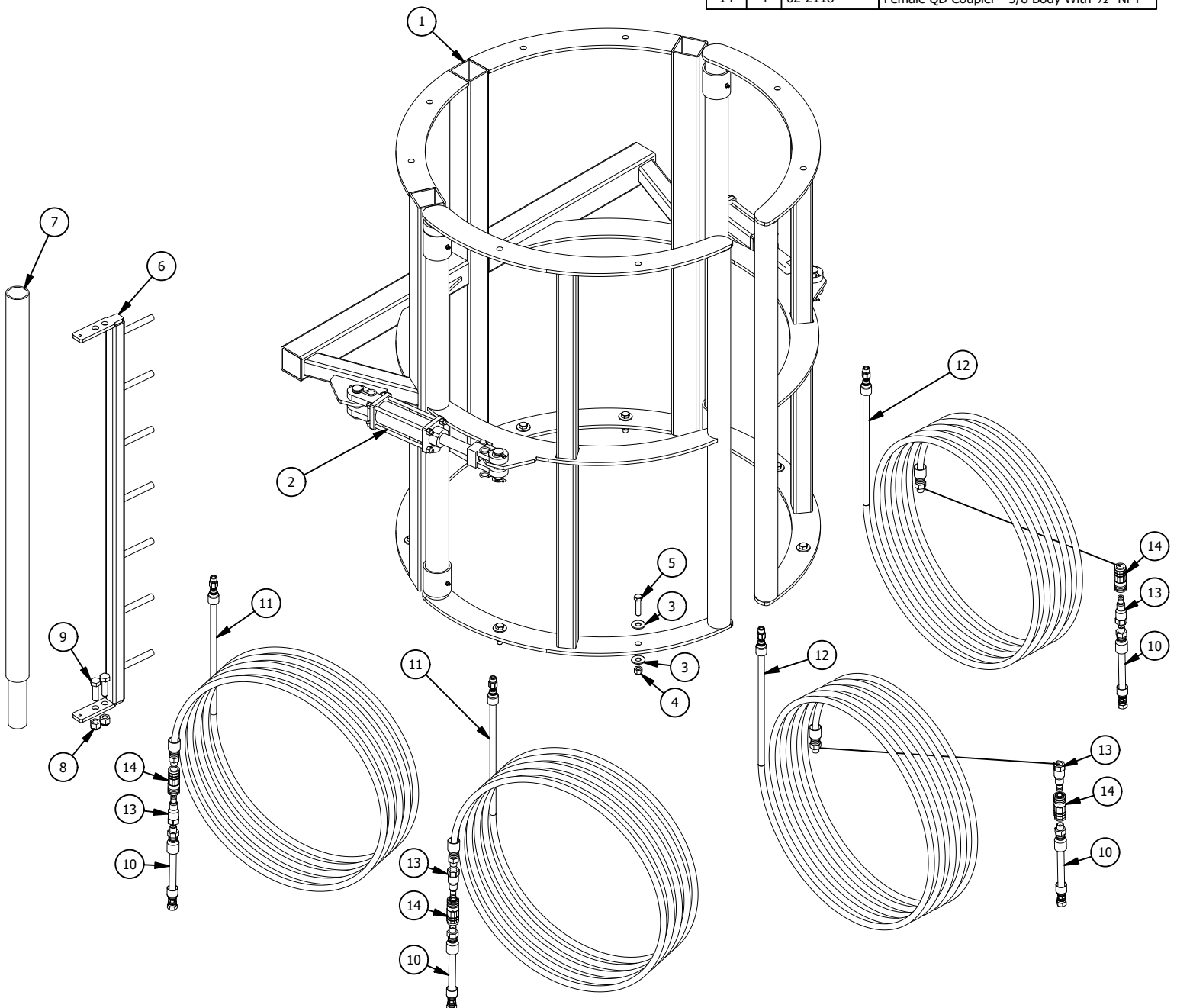
FH36-2X



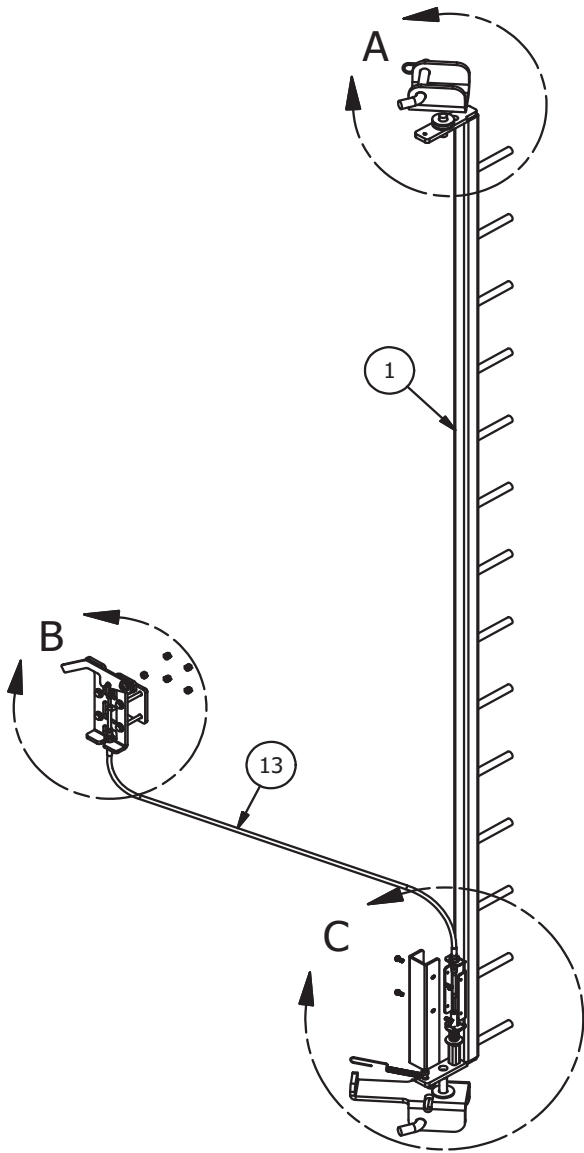
FH36-2X (36" - 4 FT. EXTENSION) FT. EXTENSION)

FH36-4X

ITEM	QTY	PART NUMBER	DESCRIPTION
1	1	FH36-4X-A-1	Welded Frame and Gate Assembly
2	2	02-708	Hyd Cyl 2"Bore x 4"Stroke (2500psi / 172 bar)
3	16	09-107	1/2" Flat Washer
4	8	09-208	1/2" -13 Nylon Nut
5	8	09-328	1/2" -13 x 2" GR8 Bolt
6	1	FHS-A-5	4ft Extension Chain Link Stretcher Bar
7	1	FH-A-8	4ft Drive Forward Arm Assembly
8	2	09-210	5/8"-11 Nylon Nut
9	2	09-362	5/8"-11 x 2" GR8 Bolt
10	4	FH-A-12	4Ft. Ext. Hose Assy (5000psi / 345 bar)
11	2	FH-A-13	4ft Ext. LH Cyl Hose Assy (5000psi / 345 bar)
12	2	FH-A-14	4ft Ext. RH Cyl Hose Assy (5000psi / 345 bar)
13	4	02-2117	Male QD Coupler-Conn Pres 3/8"Body-1/2"NPT
14	4	02-2118	Female QD Coupler - 3/8 Body With 1/2" NPT

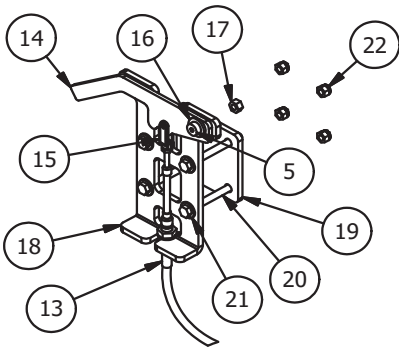


FHS99

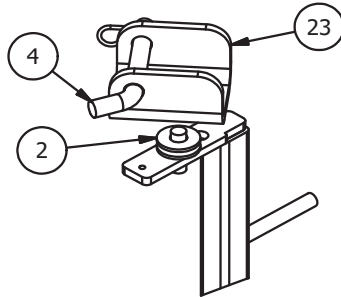


PARTS LIST				
ITEM	QTY	PART NUMBER	DESCRIPTION	
1	1	FHS-A-1	FH Stretcher - CL Stretcher Welded Assem	
2	3	09-109	5/8" Flat Washer	
3	1	FHS-A-3	FH Stretcher Lower Mount	
4	2	09-425	10332 Bent Pin 3/4 x 4 1/2"	
5	2	09-361	3/8 x 3/8" x 5/16" Thread Shoulder Scr	
6	1	09-800	Return Spring	
7	1	FHS-10	Fence Hog Stretcher - Lower Cable Guard	
8	4	09-352	#10-32x1/2" Thread Cutting Screw Type F	
9	2	09-107	1/2" Flat Washer	
10	1	09-801	Latch Spring	
11	1	09-417	1/4" x 1" Roll Pin	
12	1	FHS-11	Fence Hog Stretcher - Latch Pin	
13	1	09-802	Control Cable (#10-32 Thread)	
14	1	FHS-8	Fence Hog Stretcher - Handle	
15	1	09-803	Cable Clevis (10# -32 Thread)	
16	2	09-105	5/16" Flat Washer	
17	1	09-203	5/16-18 Nut	
18	1	FHS-6	Fence Hog Stretcher - Handle Mount Plate	
19	1	FHS-7	Fence Hog Stretcher - Backing Plate	
20	4	09-306	5/16-18 x 3 GR5 Bolt	
21	4	09-104	1/4" Flat Washer	
22	4	09-202	5/16"-18 Nylon Nut	
23	1	FHS-A-2	FH Stretcher - Upper Mount	

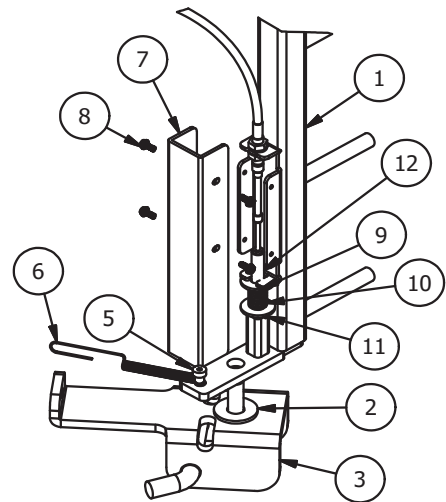
DETAIL B



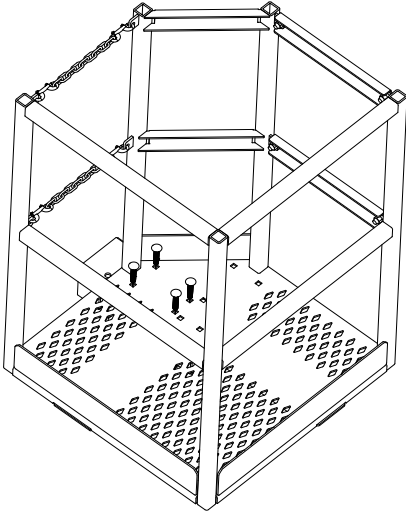
DETAIL A



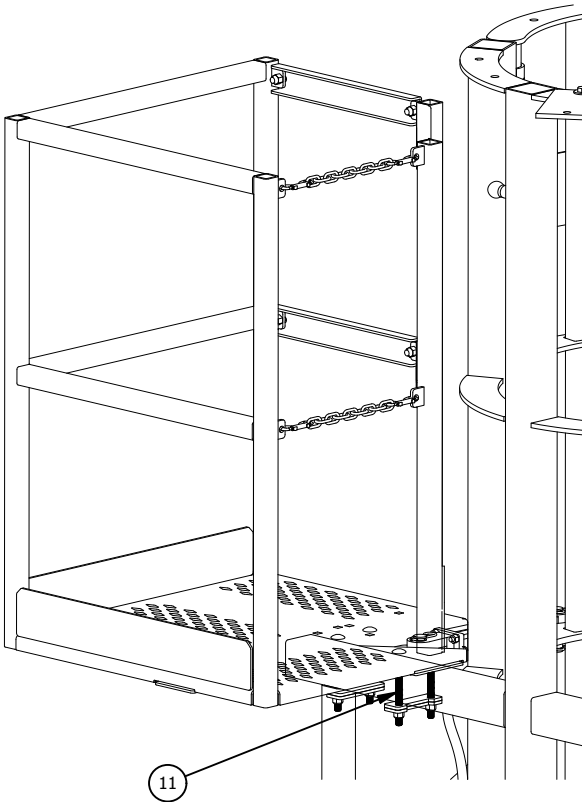
DETAIL C



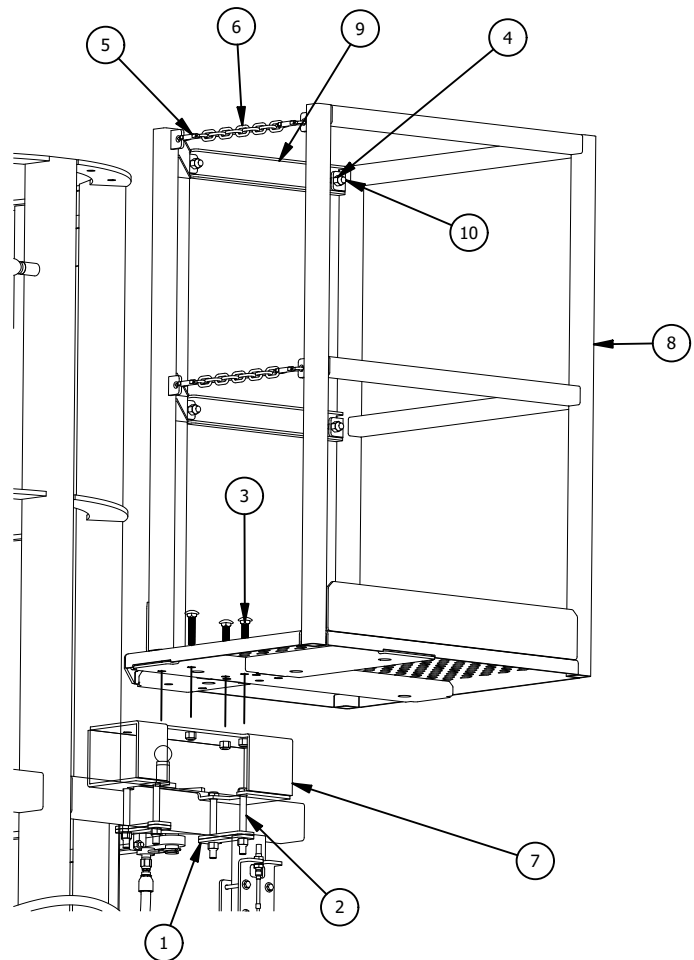
FHWP



ITEM	QTY	PART NUMBER	DESCRIPTION
1	4	FH-WP-12	Mount Plate
2	4	09-381	1/2" -13 x 5" Grade 8 (Zinc)
3	4	09-396	1/2" -13 x 2 1/2" Grade 5 Carriage Bolt
4	16	09-208	1/2" -13 Nylon Nut
5	4	09-806	Spring Snap Chain Clip
6	2	20-111	3/16" Chain 1 1/2' long
7	1	FHWP-A-2	Welded Bracket Assembly
8	1	FHWP-A-1	Welded Platform Assembly
9	2	FH-WP-4	Removable Cross Bar
10	4	09-316	1/2"-13 x 1 1/4" GR5 Bolt
11	4	09-397	1/2" -13 x 6" Grade 5 Carriage Bolt



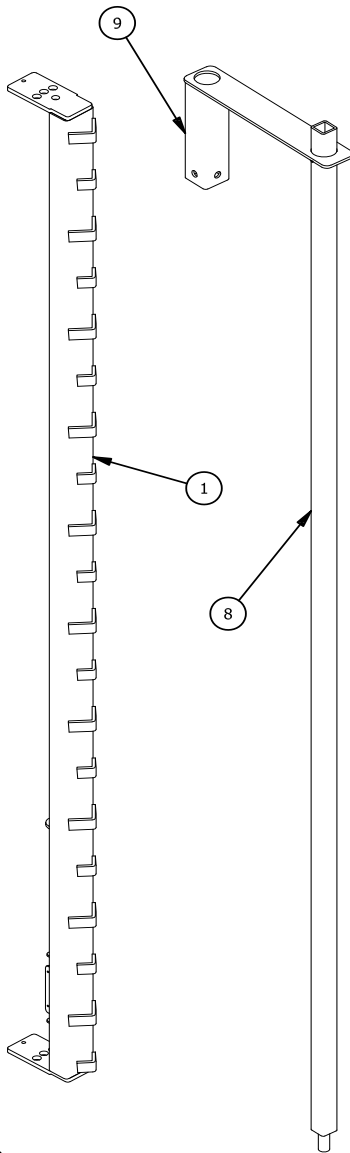
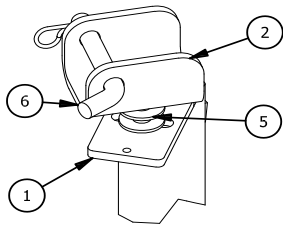
LEFT SIDE



RIGHT SIDE

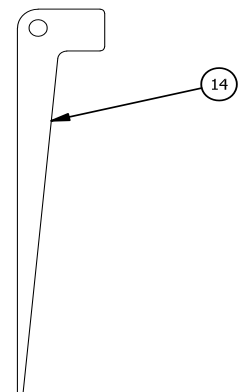
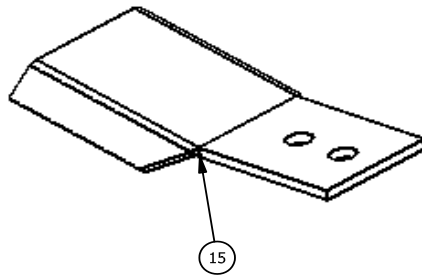
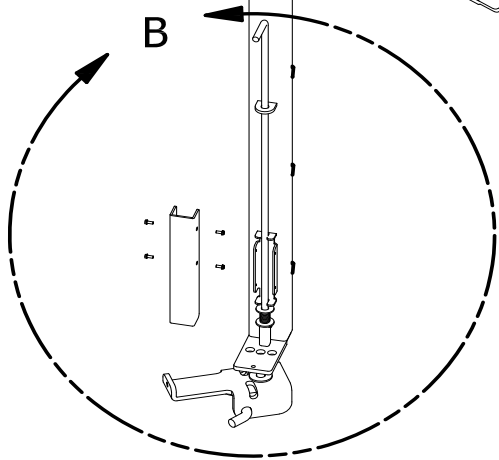
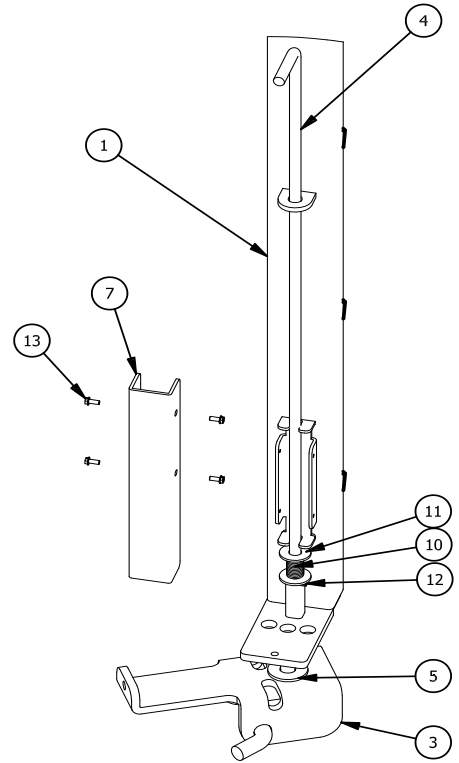
FHWS99-24 (WOVEN WIRE STRETCHER)

DETAIL A



PARTS LIST			
ITEM	QTY	PART NUMBER	DESCRIPTION
1	1	FHS-A-7	Woven Wire Stretcher Welded Assembly
2	1	FHS-A-2	Stretcher Upper Mount
3	1	FHS-A-3	Stretcher Lower Mount
4	1	FHS-17	Woven Wire Stretcher Handle
5	3	09-109	5/8" Flat Washer
6	2	09-425	Bent Pin
7	1	FHS-10	Stretcher Lower Cable Guard
8	1	FH-A-2	Woven Wire Centering Bar
9	1	FH24-A-3	Roll Centering Rod Support Assembly
10	1	09-801	Latch Spring
11	2	09-107	1/2" Flat Washer
12	1	09-417	1/4" x 1" Roll Pin
13	4	09-352	#10-32 x 1/2" Thread Cutting Screw
14	10	FH-24-35	Woven Wire Stretcher Wedge
15	1	FH-24-34	Field Fence Shoe

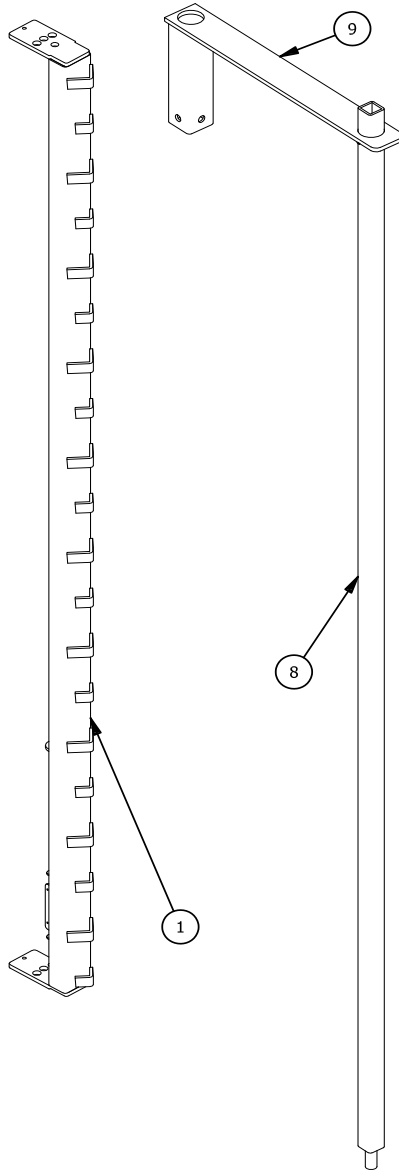
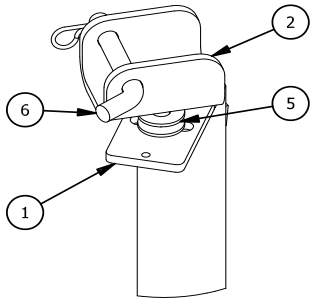
DETAIL B



FHWS99-24

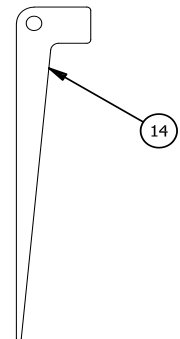
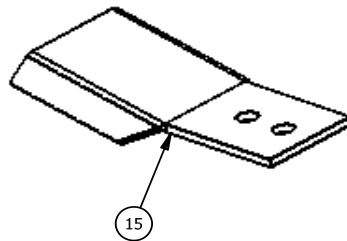
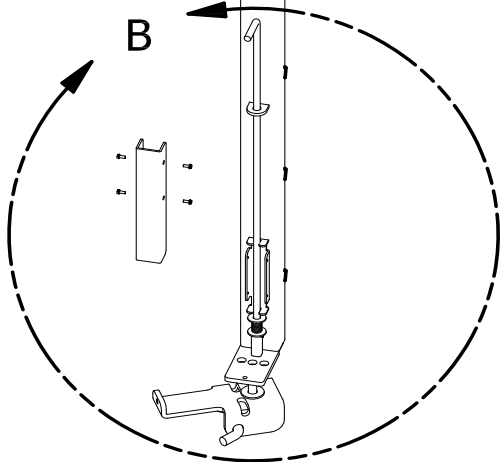
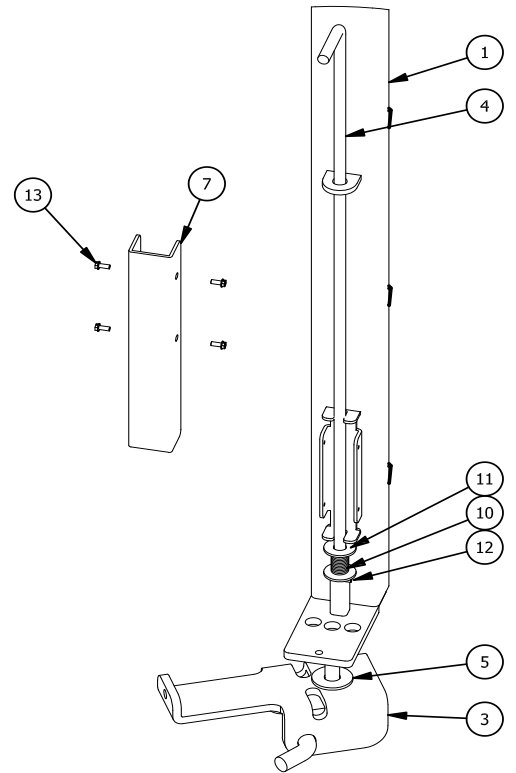
FHWS99-36 (WOVEN WIRE STRETCHER)

DETAIL A



PARTS LIST				
ITEM	QTY	PART NUMBER	DESCRIPTION	
1	1	FHS-A-7	Woven Wire Stretcher Welded Assembly	
2	1	FHS-A-2	Stretcher Upper Mount	
3	1	FHS-A-3	Stretcher Lower Mount	
4	1	FHS-17	Handle For Woven Wire Stretcher	
5	3	09-109	5/8" Flat Washer	
6	2	09-425	Bent Pin	
7	1	FHS-10	Stretcher Lower Cable Guard	
8	1	FH-A-2	Woven Wire Centering Bar	
9	1	FH36-A-3	Roll Centering Rod Support	
10	1	09-801	Latch Spring	
11	2	09-107	1/2" Flat Washer	
12	1	09-417	1/4" x 1" Roll Pin	
13	4	09-352	#10-32 x 1/2" Thread Cutting Screw	
14	10	FH-24-35	Woven Wire Stretcher Wedge	
15	1	FH-24-34	Field Fence Shoe	

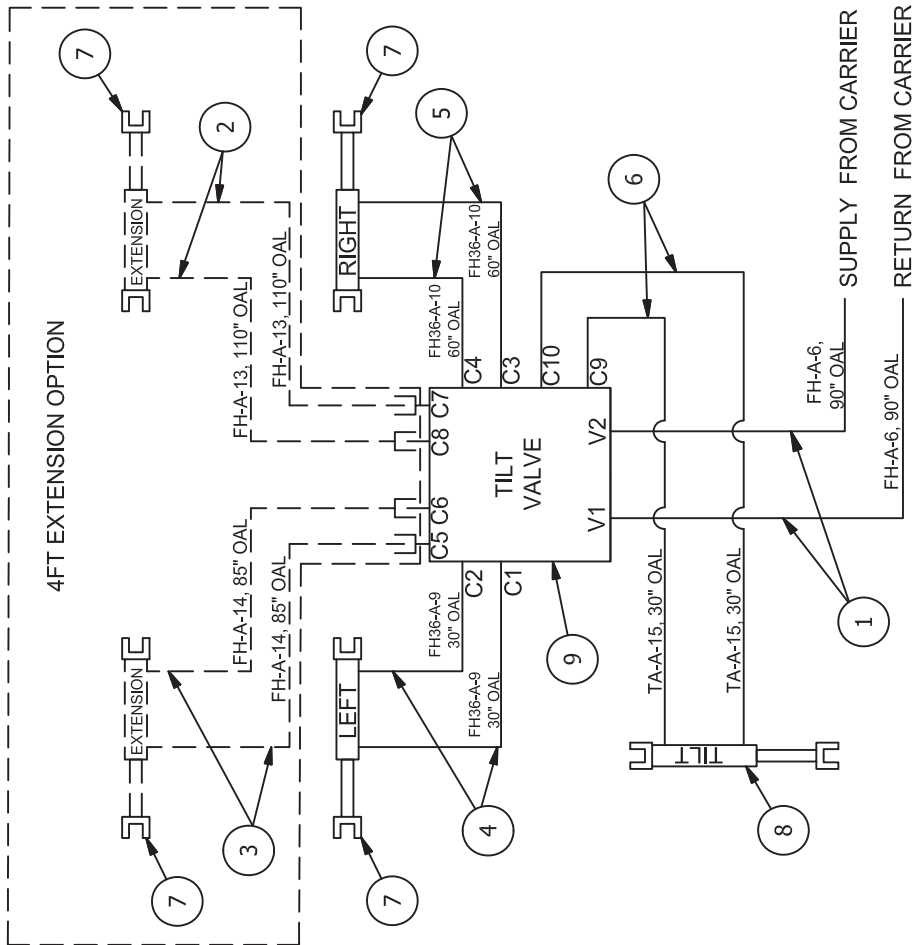
DETAIL B



FHWS99-36

TA SCHEMATIC

PARTS LIST			
ITEM	QTY	PART NUMBER	DESCRIPTION
1	2	FH-A-6	1/2" ID x 90" 4000psi / 276 bar
2	2	FH-A-13	3/8" ID x 110" 5000psi / 345 bar
3	2	FH-A-14	3/8" ID x 85" 5000psi / 345 bar
4	2	FH36-A-9	3/8" ID x 30" 5000psi / 345 bar
5	2	FH36-A-10	3/8" ID x 60" 5000psi / 345 bar
6	2	TA-A-15	3/8" ID x 30" 5000psi / 345 bar
7	4	02-708	2 X 4 Cyl 2500psi / 172 bar
8	1	02-704	2-1/2 X 4 Cyl 2500psi / 172 bar
9	1	TA-A-17	Tilt Valve 3045psi / 210 bar



MATERIAL:		FENCE HOG TILT VALVE SCHEMATIC	
THICK:		EZG Manufacturing	DWG NO.: TA SCHEMATIC - CE
LEN:		1833 N Riverview Rd	SCALE: 1" = 8"
QTY:		Malta, Ohio 43758	DWG DATE: 1/27/25
		<small>All drawings are sole property of EZG Mfg. Corp., Malta, Ohio. Copying or changing drawing is prohibited without consent of owner.</small>	
REV	DATE	DESCRIPTION	CHECKED BY:
			DWG BY: PARKER
			Retro to S/N:
			S/N:
			to
			REV. IR

TILT

TILT

PARTS LIST			
ITEM	QTY	PART NUMBER	DESCRIPTION
1	1	TA-A-2	Back Half Mount Plate Assembly
2	1	TA-A-3	Front Half Mount Plate Assembly
3	1	TA-A-1	Upper Cylinder Mount Assembly
4	1	02-704	Tilt Hyd Cyl 2 1/2 Bore x 14"(2500psi / 172 bar)
5	1	TA-7	Upper Cylinder Mount Back Plate
6	2	TA-27	Bolt on Stiffener Angle
7	11	09-325	1/2"-13 x 1 3/4" Grade 5 Bolt
8	6	09-365	1/2"-13 x 2" Grade 8 Bolt
9	4	09-318	1/2" -13 x 3 1/2" Grade 5 Bolt
10	20	09-208	1/2" -13 Nylon Nut
11	16	09-107	1/2" Flat Washer
12	2	09-329	3/4"-10 X 1 1/2" Grade 8 Bolt
13	2	09-3030	1" x 8" Grade 8 BOLT
14	2	09-213	1"-8 Nylon Nut
15	1	09-209	1/2" -13 Nut
16	2	TA-24	Tilt Washer
17	2	02-277	1/2" JICM to 1/2" ORM goo Adapter
18	2	FH-A-6	FH Supply Hose Assembly (4000psi / 276 bar)
19	1	TA-A-17	Tilt Manual Main/Select Valve Kit (3045psi/210 bar)
19a	1	TA-A-19	Elec Main/Select Valve Kit-NO HARNESS
20	2	TA-A-15	Hose Assy-Valve - Tilt Cylinder (5000psi / 34.M bar)
21	1	02-221	1/2" Female Disconnect
22	1	02-222	1/2" Male Disconnect
23	2	02-2114	1/2" Male Pipe X 1/2" Female Pipe Street 45
24	1	02-634	Deltrol Bi-Directional Relief (2000psi / 138 bar)
25	2	09-301	1/4"-20 x 1" Grade 5 All Thread Bolt
26	2	09-100	1/4" Lock Washer
27	2	09-104	1/4" Flat Washer
28	1	TA-A-18	FH Tilt Harness w / 14 Pin Connector
29	1	TA-A-20	FH Tilt Harness w/7-Pin Connector
30	1	TA-A-21	FH Tilt Harness w/8-Pin Connector

DETAIL B

DETAIL A



Warranty

EZG Manufacturing (“EZG”) warrants its products to be free of defects in material or workmanship that develop under normal use for two years.



Warranty period begins on the IN-SERVICE date (date of purchase by the end user of the product, date placed in service by a rental operator, or date of any utilization). All warranty is based on the following limited warranty terms and conditions, including the disclaimer of implied warranties and consequential damages. **Warranty registration is required to establish the in-service date and for the warranty to become effective.**

EZG Limited Warranty & Limitation of Liability Terms:

1. EZG obligation and liability under this warranty is limited to repairing or replacing parts if, after EZG’s inspection, there is determined to be a defect in material or workmanship. EZG reserves the choice to repair or replace.
2. If EZG chooses to replace the part, it will be at no cost to the customer and will be made available to the EZG Distributor, Dealer, or Rental Center from whom the End User purchased the product.
3. Replacement or repair parts, installed in the product, are warranted only for the remainder of warranty period of the product as though they were the original parts.
4. EZG does not warranty engines. Engine warranty claims should be made directly to an authorized factory service center for the particular engine manufacturer.
5. EZG’s warranty does not cover the normal maintenance of products or its components (such as engine tune-ups and oil & filter changes). The warranty also excludes normal replaceable wear items, i.e. gaskets, wear parts, seals, O-rings, belts, drive chains, clutches, etc. unless such items are deemed to fail due to defective material or workmanship.
6. EZG’s warranty will be void if it is determined that the defect resulted from operator abuse, failure to perform normal maintenance on the product, use of non-manufacturer parts, or failure to follow documented service instructions, alterations or modifications made to the product without the written approval of EZG.
8. EZG will pay shop labor on warranty items at the EZG Shop Labor Rate in existence on the date of the warranty claim. EZG technician will determine the time allowed to complete a repair which will govern the shop labor hours to be allowed.
9. EZG will pay freight on warranty replacement parts at worldwide standard ground rates. No warranty replacement parts will be shipped air freight at the expense of EZG. EZG only pays outbound freight charges when sending warranty replacement parts to the customer via ground service. EZG does not pay any inbound freight. However, if EZG determines this to be a warranted item, EZG will then reimburse the customer for inbound freight at standard ground rates.
10. The EZG WARRANTY POLICY WILL NOT COVER THE FOLLOWING: TAXES; SHOP SUPPLIES; ENVIRONMENTAL SURCHARGES; AIR FREIGHT; TRAVEL TIME; LOSS OF TIME; INCONVENIENCE; LOSS OF RENTAL REVENUE; RENTAL COSTS OF EQUIPMENT USED TO REPLACE THE PRODUCT BEING REPAIRED; LOSS OF USE OF THE PRODUCT; COMMERCIAL LOSS; OR ANY OTHER CHARGES WHATSOEVER OR ANY LIABILITIES FOR DIRECT, INCIDENTAL, OR CONSEQUENTIAL DAMAGE OR DELAY.
11. EZG MANUFACTURING MAKES NO OTHER WARRANTY, EXPRESSED OR IMPLIED. THIS LIMITED WARRANTY IS IN LIEU OF THE WARRANTY OF MERCHANTABILITY AND FITNESS. THERE ARE NO OTHER WARRANTIES THAT EXTEND BEYOND THE DESCRIPTION ON THIS DOCUMENT.
12. No EZG Manufacturing employee or representative is authorized to change this warranty in any way or grant any other warranty unless such change is made in writing and signed by an officer of EZG Manufacturing.



WARRANTY REGISTRATION IS REQUIRED TO ESTABLISH THE IN-SERVICE DATE AND FOR THE WARRANTY TO BE EFFECTIVE.
(some specialty equipment is exempted, or limitations may apply)

Fax Warranty Registration form to 740-962-2037 or submit online at www.ezgmfg.com by clicking on "Resources" then "Warranty, lastly you can click on the orange "Click Here to Register" button.

WARRANTY REGISTRATION

CONTACT: _____

COMPANY: _____

ADDRESS: _____

CITY: _____ STATE: _____ ZIP: _____

TEL: (____) _____ - _____ FAX: (____) _____ - _____ CELL: (____) _____ - _____

EMAIL: _____

PURCHASED FROM: Direct Distributor: _____

PURCHASE DATE: _____ SERIAL NO. _____

PLEASE COMPLETE THIS WARRANTY CARD, AND RETURN VIA MAIL, FAX, OR E-MAIL, WITHIN 30 DAYS OF PURCHASE TO VALIDATE YOUR MANUFACTURER'S WARRANTY FOR ALL EZG MANUFACTURING PRODUCTS.

WARRANTY PROVISIONS OF THIS MACHINE ARE HANDLED DIRECTLY THROUGH THE MANUFACTURER.

EZG MANUFACTURING * 1833 North Riverview Road, Malta, OH 43758 *

PHONE 1-800-417-9272 * Email: warranty@ezgmfg.com * FAX 740-962-2037

Please take a minute to fill out the survey below so that we can better serve our customers.

EZ Survey

1. WHERE DID YOU FIRST HEAR ABOUT EZG MANUFACTURING? (CHECK ONE)

Masonry Magazine Website Newsletter Referral Masonry Construction

Other: _____

2. WHAT INFLUENCED YOU TO BUY? QUALITY PRICE EASY TO USE OTHER

3. WHO IS YOUR SALES REPRESENTATIVE? _____

4. ARE YOU SATISFIED WITH THE CUSTOMER SERVICE YOU RECEIVED? YES NO

Explain: _____

5. WHAT OTHER EZG MANUFACTURING PRODUCTS DO YOU OWN?

6. WOULD YOU LIKE TO BE FEATURED IN OUR NEWSLETTER? YES NO

If yes, where can we reach you and what is the best time?

Comments: _____
