

FHW-CE FHW-87-CE Owner's Manual®

Serial Number _____



Before using this **Fence Hog®**, study and understand entire Owner's Manual.



W A R N I N G S

1. The **Fence Hog®** is a fence-dispensing device. Use outside of this scope may cause damage to equipment or could result in injury, or death.

2. Make sure anyone operating the **Fence Hog®** is thoroughly trained with its operation. Keep all unauthorized and untrained personnel, especially children, away from the **Fence Hog®**.

3. Consult lift equipment manufacturer's specifications to insure load capacity is not exceeded.

Model	Empty Weight	With 2ft. Extension
FHW	530lbs. (240.4 kg)	625lbs. (283.5 kg)
FHW-87	536lbs. (243.1 kg)	

Do not exceed Maximum Gross Weight of lifting equipment.

4. Always make sure **Fence Hog®** is securely fastened to skid steer.

5. Stay clear of gate opening while machine is running. Keep all body parts, solid objects, clothing, and jewelry away from all moving parts.

6. Never perform any work on the **Fence Hog®** while it is running. Before working on the **Fence Hog®**, stop skid steer and disconnect the hydraulic hose to prevent accidental starting.

7. Avoid contact with hot hydraulic fluid. Allow system to cool before performing any repairs or service.

8. Never stand under an elevated **Fence Hog®**.

9. Never ride the **Fence Hog®**.

10. Never operate the **Fence Hog®** under the influence of alcohol, drugs, or medications.

11. Use only factory authorized parts.

12. Inspect all hoses and components for cracks, leaks, abrasions, and general wear before each use. Replace if damaged before using.

13. Inspect all hoses and fittings for signs of damage, wear, scrapes, kinks or cracking. Replace hoses if any of these conditions are found. It is recommended to replace all hydraulic hoses every 5 years.

14. Always wear approved PPE and hard hats when operating or servicing a **Fence Hog®**.

15. Do not use the **Fence Hog®** as a lifting device and do not load more than one roll of fence fabric or wire in the **Fence Hog®** at a time.



Maintenance

Grease fittings located on the **Fence Hog®** and Extension. See drawing for location of fittings. All grease fittings should be greased before each use with EPI rated or equivalent grease.

Obtaining Spare Parts

Spare parts for your **Fence Hog®** may be obtained by the following procedure.

1 Record the Model number and Serial Number from the Serial Number Tag located on the left rear of the **Fence Hog®**.

2 Using the parts reference table in this manual, record part number and component.

3 Contact your local **Fence Hog®** dealer or **EZ Grout Corporation** at 1-800-417-9272 with the serial number, part number, and component.



Warning Decals - for your safety and the safety of others, replace any damaged or missing warning decals by contacting the manufacturer at 1-800-417-9272.



Fence Hog®
EZG Manufacturing
1-800-417-9272

EZG Manufacturing
1833 North Riverview Road
Malta, OH 43758
(740) 962-2024 or 1-800-417-9272
Fax (740) 962-2037

www.ezgmfg.com

Operating Instructions

Loading Wire

- 1 Attach the **Fence Hog®** to your skid steer. Refer to skidsteers owner's manual for attachment procedure.
- 2 Connect hydraulic hoses to skid steer auxiliary hydraulic couplers. Manually swing outriggers into open position and secure in place using latch pins.
- 3 Using the auxiliary hydraulics, cycle all hydraulic motions to verify the **Fence Hog®** is operating correctly. Verify that the cage opens and closes completely and moves smoothly throughout its travel of operation.

Note: *If Skidsteer is equipped with variable flow hydraulics, operate on Max. Flow.*

- 4 Open the **Fence Hog®** to its widest point and position your skid steer so that a roll of fence or fabric is directly in front of it.
- 5 Lift the boom and tilt the **Fence Hog®** down.
- 6 Move the skid steer forward until the turntable of the **Fence Hog®** aligns with the bottom of the roll of fence.
- 7 Lower the **Fence Hog®** over the roll of fence and begin closing the gates. Once the gates are mostly closed, lift the boom and tilt the **Fence Hog®** up.
- 8 The roll of fence will fall back into the cage of the **Fence Hog®**. Close the **Fence Hog®** tightly.

Note: *For Woven Wire - To hold roll upright, install Optional Roll Centering Rod through the center of roll and into turntable, by first removing the Roll Centering Rod from the square tube on the back of the **Fence Hog®** and then sliding it through the center of fence roll and into the hole in the turntable. Then, install Centering Rod support over Centering Rod.*

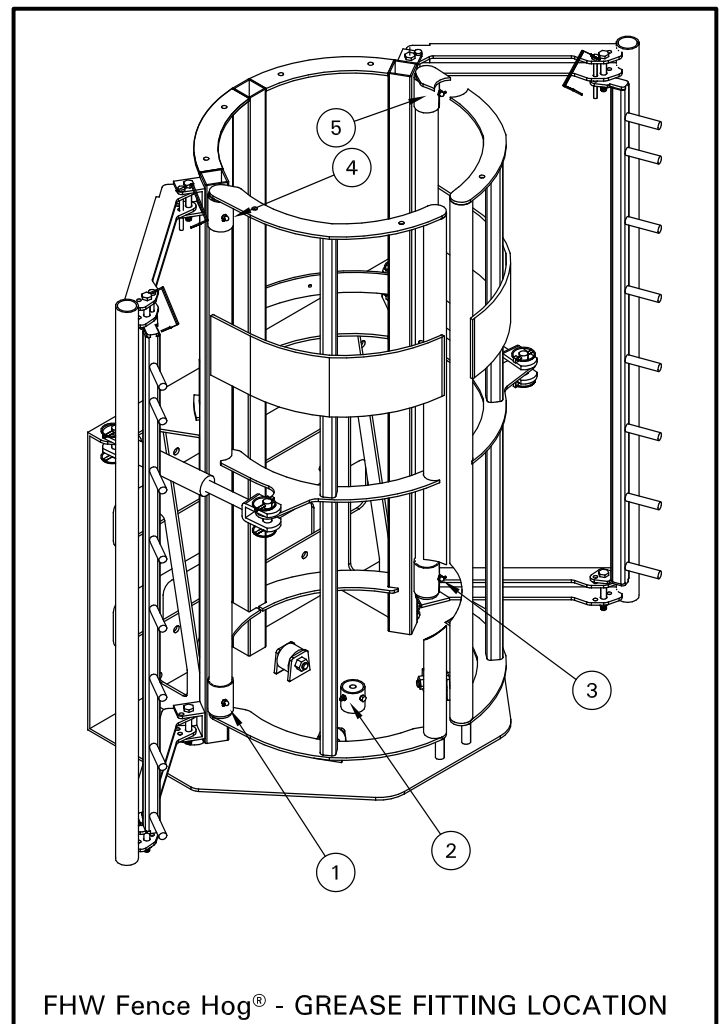
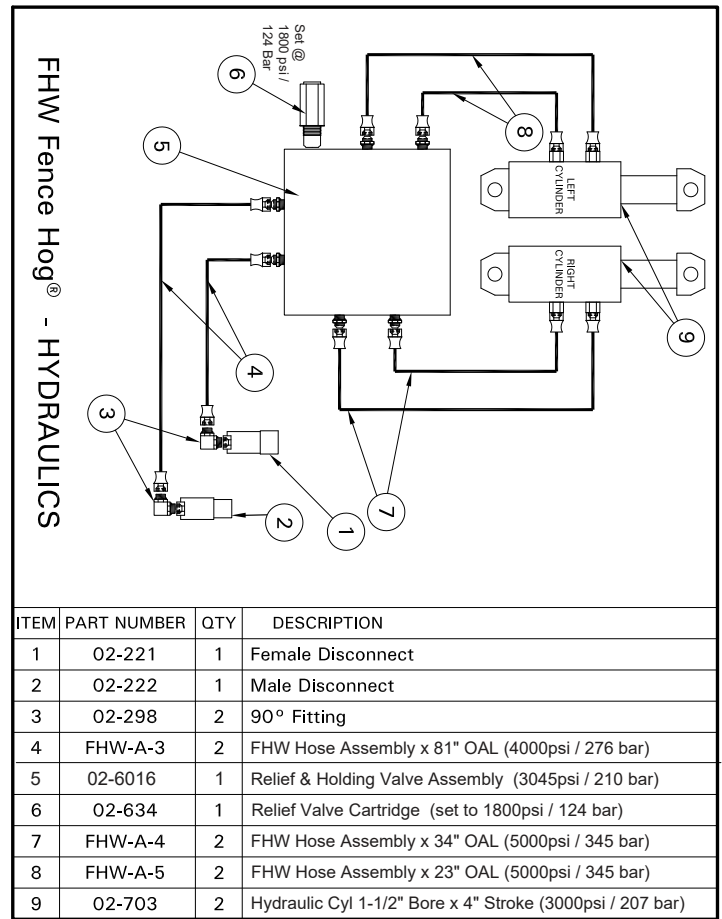
Installing Fence

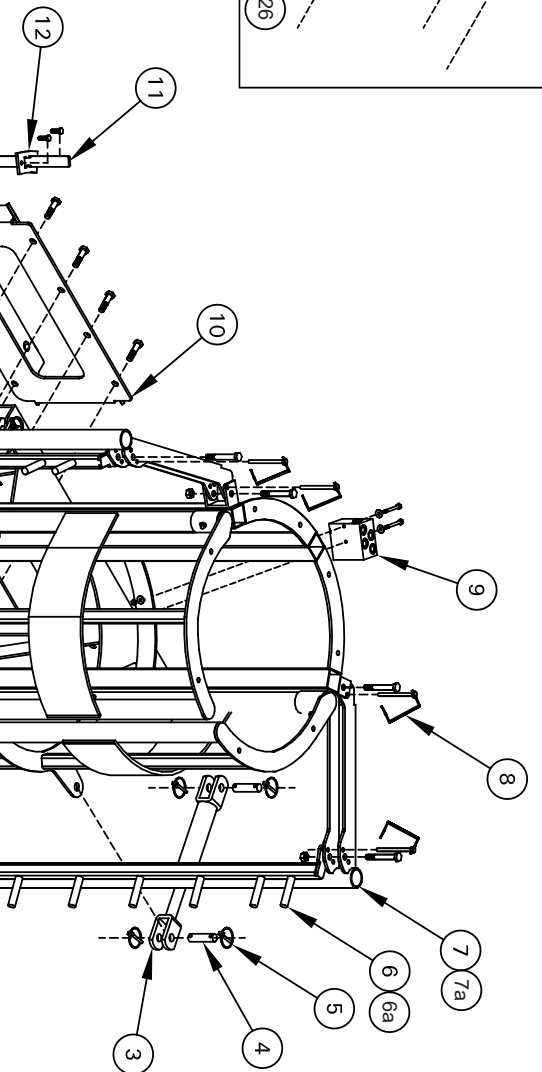
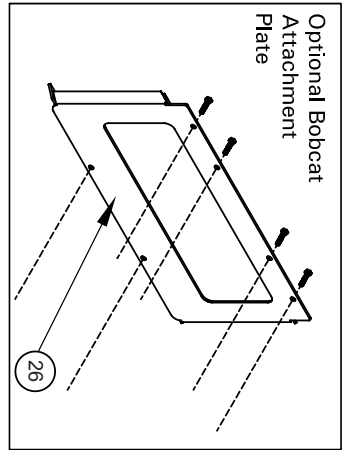
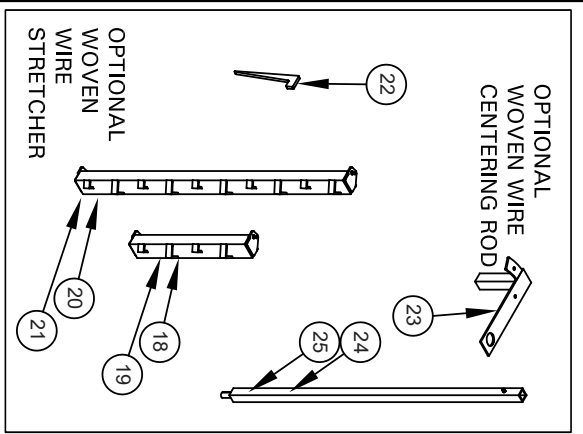
- 1 After loading a roll of wire, move the skid steer parallel to the row of fence posts and attach the beginning of the roll to the first fence post.
- 2 Slowly drive the skid steer along the fence line and the roll will start to unwind. Continue to desired stretching point.

Standard Chain Link Stretcher: *At stretching point, remove latch pin and rotate Stretching Bar until fingers point outward. Insert fingers through the fence. Skip to Step 3.*

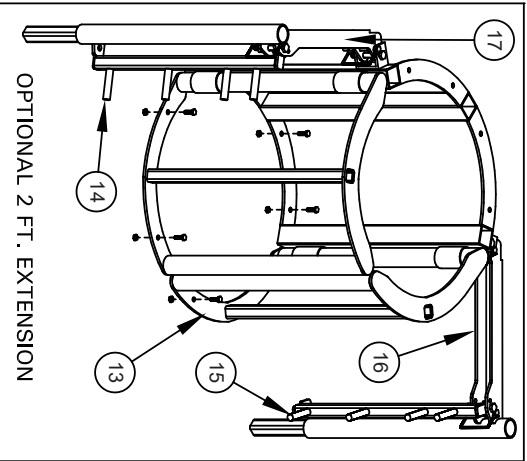
Optional Woven Wire Stretcher: *At stretching point, remove latch pin and rotate Stretching Bar outward. Align fence with stretcher. Using the holes provided, drive the locking wedges into stretcher to hold fence.*

- 3 Maneuver the skid steer so the fabric is aligned with the fence line. **HOLD CLOSE PRESSURE ON GATE** and drive skidsteer to stretch to desired tension.
- 4 Attach fence to post.
- 5 Relieve pressure on fence (*remove locking wedges if applicable*) and return stretcher to stowed position.
- 6 Repeat steps 1 through 5 as needed.





ITEM/ PART NUMBER	QTY	DESCRIPTION
1 15-109	3	Support Roller
2 FHW-A-1	1	Turntable
3 02-703	2	Hydraulic Cylinder
4 GH-535	4	Cylinder Pin
5 09-400	8	1/4" Linch Pin
6 FHW-CLS	1	ChainLink Stretcher
6a FHW-A-23	1	FHW-87 - ChainLink Stretcher Bar Assembly
7 FHW-A-2	1	Outrigger
7a 09-400	1	FHW-87 - Drive Forward Arm Assembly
8 09-407	4	Latch Pin
9 02-6016	1	Relief & Holding Valve Assembly (3045psi /210 bar)
10 FHW-A-9	1	Universal Skidsteer Attachment Plate
11 FHW-16	1	Brake Lever
12 FHW-20	1	Brake Latch
13 FHW-2X	1	Optional 2ft. Extension
14 FHW-2X-CLS-R	1	Opt.2ft. Chainlink Stretcher (Right)
15 FHW-2X-CLS-L	1	Opt.2ft. Chainlink Stretcher (Left)
16 FHW-A-1-L	1	Outrigger for 2ft. Ext (Left)
17 FHW-A-1-R	1	Outrigger for 2ft. Ext (Right)
18 FHW-2X-WWS-R	1	Opt. 2ft. Ext. Woven Wire Stretcher (Right)
19 FHW-2X-WWS-L	1	Opt. 2ft. Ext. Woven Wire Stretcher (Left)
20 FHW-WWS-R	1	Opt. Woven Wire Stretcher (Right)
21 FHW-WWS-L	1	Opt. Woven Wire Stretcher (Left)
22 FH-35	5	Woven Wire Stretcher Wedge
23 FHW-A-6	1	FHW Roll Centering Rod Support
24 FHW-A-7	1	FHW Roll Centering Rod (std. Length)
25 FHW-A-8	1	FHW Roll Centering Rod (if using 2' ext.)
26 FHW-A-10	1	Optional Bobcat Attachment Plate



FHW Fence Hog®

WARNING LABELS



Read Manual Before Operating
P/N 16-1015
QTY 1



Hard Hat, Eye & Hearing
Protection P/N 16-1017
QTY 1



Hand Protection Required
P/N 16-1013
QTY 1



Foot Protection Required
P/N 16-1023
QTY 1



Release of Pressure Warning
P/N 16-1014
QTY 1



Hand Crush Warning
P/N 16-1011
QTY 10



Forklift Lifting Point
P/N 16-1012
QTY 2



Lubricant Grease
P/N 16-1021
QTY 7



Lock
P/N 16-1019
QTY 1



Unlocked
P/N 16-1020
QTY 1



Warranty

EZG Manufacturing (“EZG”) warrants its products to be free of defects in material or workmanship that develop under normal use for two years.



Warranty period begins on the IN-SERVICE date (date of purchase by the end user of the product, date placed in service by a rental operator, or date of any utilization). All warranty is based on the following limited warranty terms and conditions, including the disclaimer of implied warranties and consequential damages. **Warranty registration is required to establish the in-service date and for the warranty to become effective.**

EZG Limited Warranty & Limitation of Liability Terms:

1. EZG obligation and liability under this warranty is limited to repairing or replacing parts if, after EZG’s inspection, there is determined to be a defect in material or workmanship. EZG reserves the choice to repair or replace.
2. If EZG chooses to replace the part, it will be at no cost to the customer and will be made available to the EZG Distributor, Dealer, or Rental Center from whom the End User purchased the product.
3. Replacement or repair parts, installed in the product, are warranted only for the remainder of warranty period of the product as though they were the original parts.
4. EZG does not warranty engines. Engine warranty claims should be made directly to an authorized factory service center for the particular engine manufacturer.
5. EZG’s warranty does not cover the normal maintenance of products or its components (such as engine tune-ups and oil & filter changes). The warranty also excludes normal replaceable wear items, i.e. gaskets, wear parts, seals, O-rings, belts, drive chains, clutches, etc. unless such items are deemed to fail due to defective material or workmanship.
6. EZG’s warranty will be void if it is determined that the defect resulted from operator abuse, failure to perform normal maintenance on the product, use of non-manufacturer parts, or failure to follow documented service instructions, alterations or modifications made to the product without the written approval of EZG.
8. EZG will pay shop labor on warranty items at the EZG Shop Labor Rate in existence on the date of the warranty claim. EZG technician will determine the time allowed to complete a repair which will govern the shop labor hours to be allowed.
9. EZG will pay freight on warranty replacement parts at worldwide standard ground rates. No warranty replacement parts will be shipped air freight at the expense of EZG. EZG only pays outbound freight charges when sending warranty replacement parts to the customer via ground service. EZG does not pay any inbound freight. However, if EZG determines this to be a warranted item, EZG will then reimburse the customer for inbound freight at standard ground rates.
10. The EZG WARRANTY POLICY WILL NOT COVER THE FOLLOWING: TAXES; SHOP SUPPLIES; ENVIRONMENTAL SURCHARGES; AIR FREIGHT; TRAVEL TIME; LOSS OF TIME; INCONVENIENCE; LOSS OF RENTAL REVENUE; RENTAL COSTS OF EQUIPMENT USED TO REPLACE THE PRODUCT BEING REPAIRED; LOSS OF USE OF THE PRODUCT; COMMERCIAL LOSS; OR ANY OTHER CHARGES WHATSOEVER OR ANY LIABILITIES FOR DIRECT, INCIDENTAL, OR CONSEQUENTIAL DAMAGE OR DELAY.
11. EZG MANUFACTURING MAKES NO OTHER WARRANTY, EXPRESSED OR IMPLIED. THIS LIMITED WARRANTY IS IN LIEU OF THE WARRANTY OF MERCHANTABILITY AND FITNESS. THERE ARE NO OTHER WARRANTIES THAT EXTEND BEYOND THE DESCRIPTION ON THIS DOCUMENT.
12. No EZG Manufacturing employee or representative is authorized to change this warranty in any way or grant any other warranty unless such change is made in writing and signed by an officer of EZG Manufacturing.



WARRANTY REGISTRATION IS REQUIRED TO ESTABLISH THE IN-SERVICE DATE AND FOR THE WARRANTY TO BE EFFECTIVE.
(some specialty equipment is exempted, or limitations may apply)

Fax Warranty Registration form to 740-962-2037 or submit online at www.ezgmfg.com by clicking on "Resources" then "Warranty, lastly you can click on the orange "Click Here to Register" button.

WARRANTY REGISTRATION

CONTACT: _____

COMPANY: _____

ADDRESS: _____

CITY: _____ STATE: _____ ZIP: _____

TEL: (____) _____ - _____ FAX: (____) _____ - _____ CELL: (____) _____ - _____

EMAIL: _____

PURCHASED FROM: Direct Distributor: _____

PURCHASE DATE: _____ SERIAL NO. _____

PLEASE COMPLETE THIS WARRANTY CARD, AND RETURN VIA MAIL, FAX, OR E-MAIL, WITHIN 30 DAYS OF PURCHASE TO VALIDATE YOUR MANUFACTURER'S WARRANTY FOR ALL EZG MANUFACTURING PRODUCTS.

WARRANTY PROVISIONS OF THIS MACHINE ARE HANDLED DIRECTLY THROUGH THE MANUFACTURER.

EZG MANUFACTURING * 1833 North Riverview Road, Malta, OH 43758 *

PHONE 1-800-417-9272 * Email: warranty@ezgmfg.com * FAX 740-962-2037

Please take a minute to fill out the survey below so that we can better serve our customers.

EZ Survey

1. WHERE DID YOU FIRST HEAR ABOUT EZG MANUFACTURING? (CHECK ONE)

Masonry Magazine Website Newsletter Referral Masonry Construction

Other: _____

2. WHAT INFLUENCED YOU TO BUY? QUALITY PRICE EASY TO USE OTHER

3. WHO IS YOUR SALES REPRESENTATIVE? _____

4. ARE YOU SATISFIED WITH THE CUSTOMER SERVICE YOU RECEIVED? YES NO

Explain: _____

5. WHAT OTHER EZG MANUFACTURING PRODUCTS DO YOU OWN?

6. WOULD YOU LIKE TO BE FEATURED IN OUR NEWSLETTER? YES NO

If yes, where can we reach you and what is the best time?

Comments: _____
